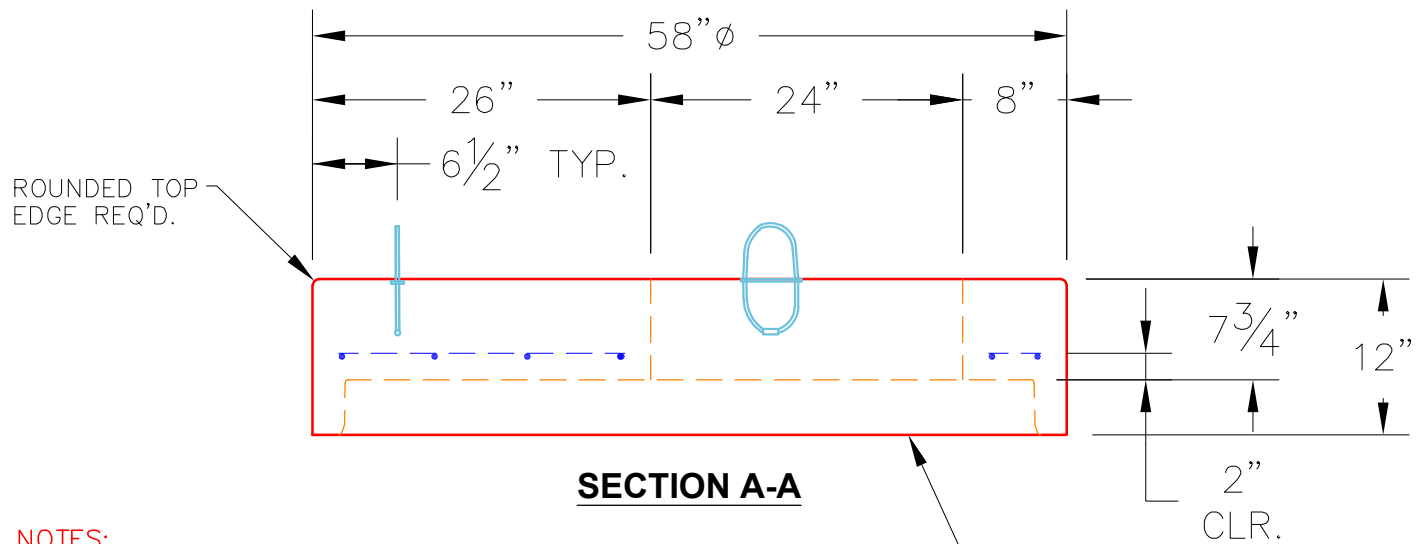
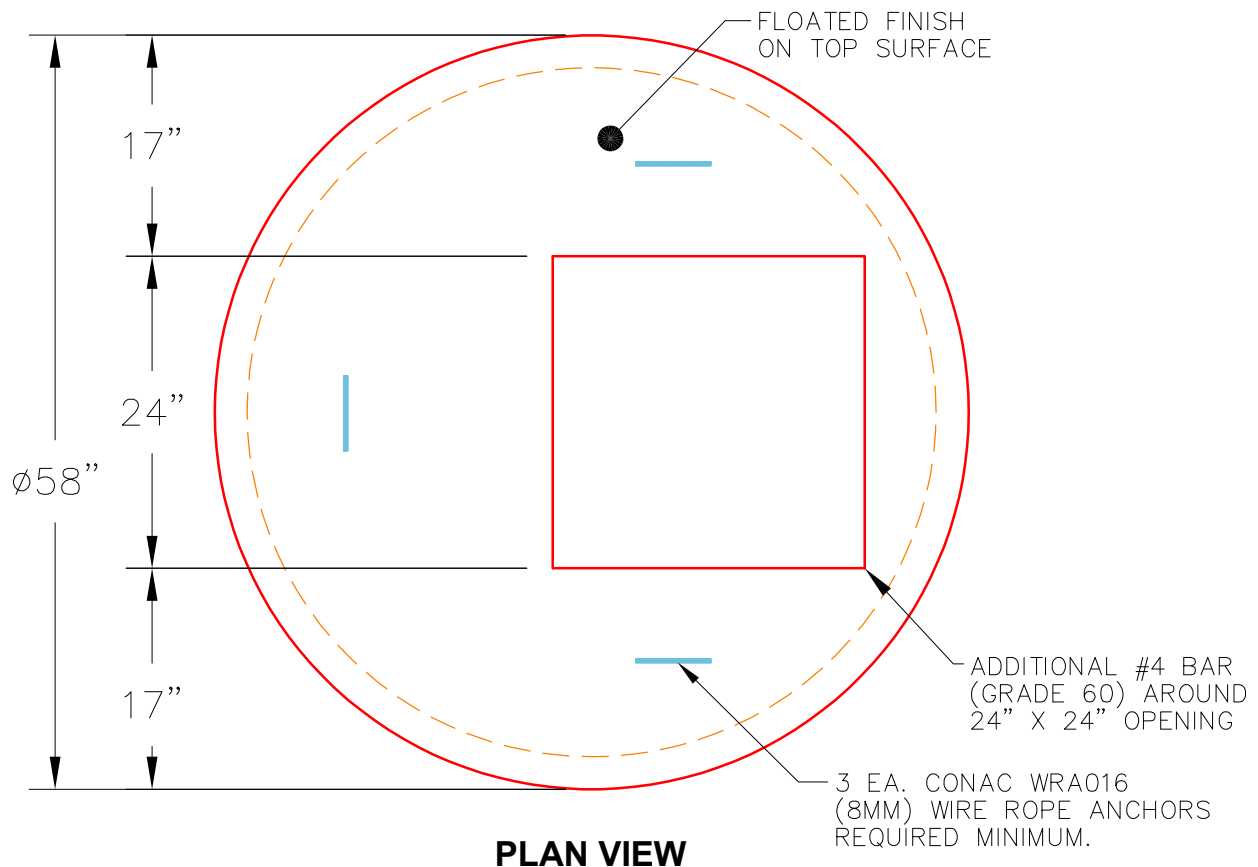


THIS DRAWING IS INTENDED TO BE PRINTED IN COLOR.



NOTES:

1. MANUFACTURED TO ASTM C-478 (LATEST REVISION).
2. CONCRETE: 5,000 PSI AT 28 DAYS.
3. REINFORCING: #4 @ 10" O.C. E.W.(GRADE 60).
4. WEIGHT: 1,499 LBS.

PRODUCTION WORK ORDER		PRODUCT I.D.: MH048LD12-24SQECC	DESCRIPTION: 48" ϕ X 12" MANHOLE TOP SLAB W/ 24" SQ. ECCENTRIC OPENING	
	QUALITY CONTROL CHECKLIST		PRODUCT VIEW: RIGHT SIDE UP	
	<input type="checkbox"/> ALL DIMENSIONS CORRECT.		CUSTOMER: STOCK	
	<input type="checkbox"/> LIFTING ANCHORS INSTALLED.		PROJECT: STOCK	
	<input type="checkbox"/> OPENING LOCATION CORRECT.		PLANT: BEAVER DAM, KY.	
	<input type="checkbox"/> REINFORCING CORRECT.		WEIGHT: 1,499 LBS.	
	<input type="checkbox"/> FINISH ON SLAB SURFACE UNIFORM.		STRUCTURE: N/A	
<input type="checkbox"/> OUTSIDE TOP EDGE TROWELLED.		TOP SECTION JOINT: N/A		
<input type="checkbox"/> JOINT INSTALLED IF NECESSARY.		QUOTE/SALES ORDER NO: N/A		
		BASE SECTION JOINT: N/A		
		PE: J. ROSS		
		DRAWING: J. COPPAGE		
		QC CHECK INITIALS:		
		DATE: 7/3/24		
		SCALE: NTS		
		PG. 1 of 1		