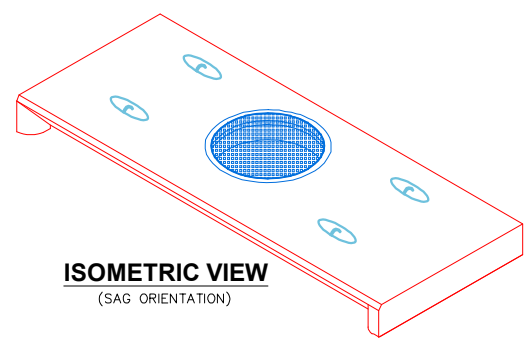
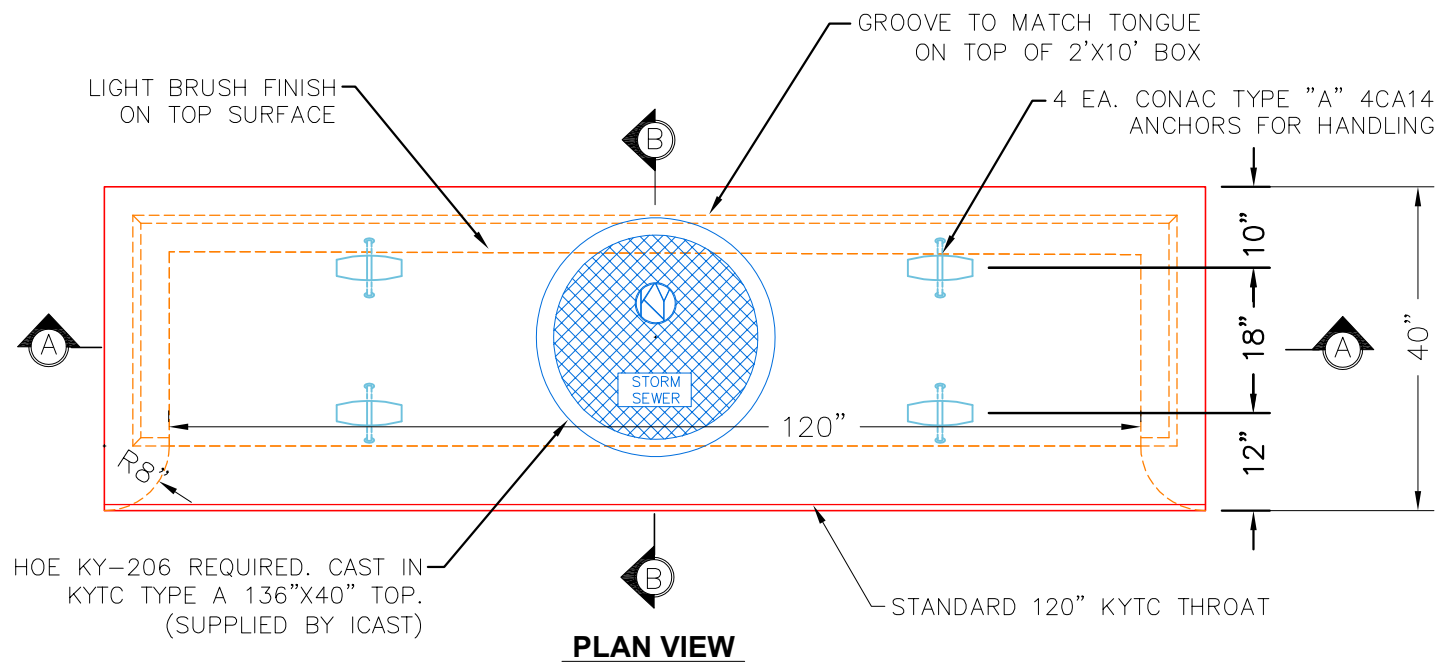
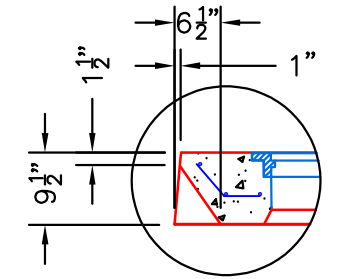


**\*KYTC STATE PRODUCT\***

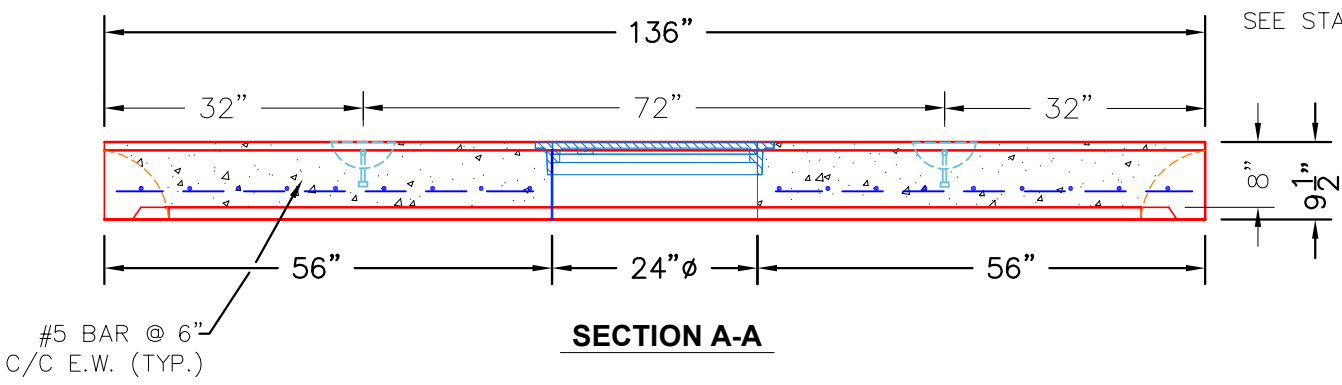
- NOTES:**
1. MANUFACTURE PER ASTM C-913 (LATEST REVISION).
  2. CONCRETE F'C = 4,500 PSI AT 28 DAYS.
  3. REINFORCING: #5 BAR @ 6" C/C E.W. (GRADE 60)
  4. J.R. HOE KY-206 FRAME & COVER TO BE CAST IN TOP.
  5. LIGHT BRUSH FINISH REQUIRED ON TOP.



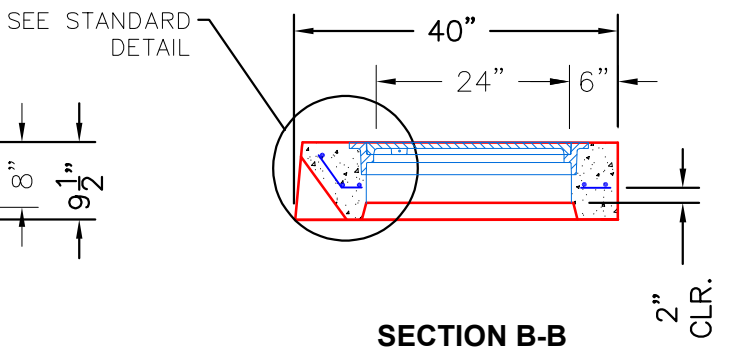
**ISOMETRIC VIEW**  
(SAG ORIENTATION)




**STANDARD CURB DETAIL**



**SECTION A-A**



**SECTION B-B**

<b>PRODUCTION WORK ORDER</b>		PRODUCT I.D.: CBITA10-TS	DESCRIPTION: KYTC CURB BOX INLET TYPE A 10' TOP (SAG)		
	QUALITY CONTROL CHECKLIST	PRODUCT VIEW: RIGHT SIDE UP	CUSTOMER: STOCK		
	<input type="checkbox"/> ALL DIMENSIONS CORRECT.	PLANT: BEAVER DAM, KY.	PROJECT: STOCK		
	<input type="checkbox"/> LIFTERS INSTALLED.	WEIGHT: 3,400 LBS.	STRUCTURE ID.: N/A		
	<input type="checkbox"/> CASTING AT CORRECT LOCATION.	TOP SECTION JOINT: N/A	SALES ORDER NO: N/A		
	<input type="checkbox"/> REINFORCING CORRECT.	BOTTOM SECTION JOINT: SHIP-LAP GROOVE	CHECK: J.H. ROSS, PE	DRAWING: N. RICHARDS	
	<input type="checkbox"/> LIGHT BRUSH FINISH ACCEPTABLE.	QC CHECK INITIALS:	DATE: 06/19/23	SCALE: NTS	PG. 1 of 1
	<input type="checkbox"/> KYTC THROAT CORRECT.				
<input type="checkbox"/> ALL PATCHWORK ACCEPTABLE.					