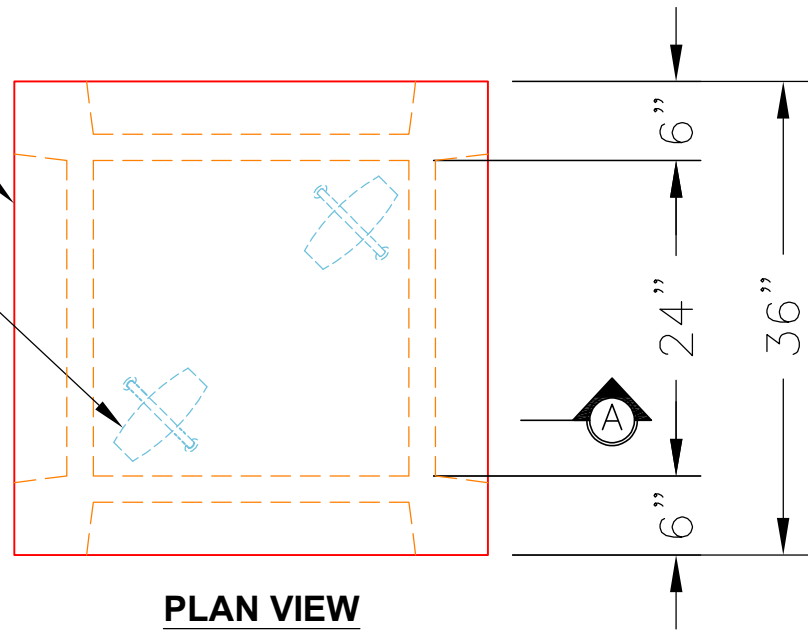


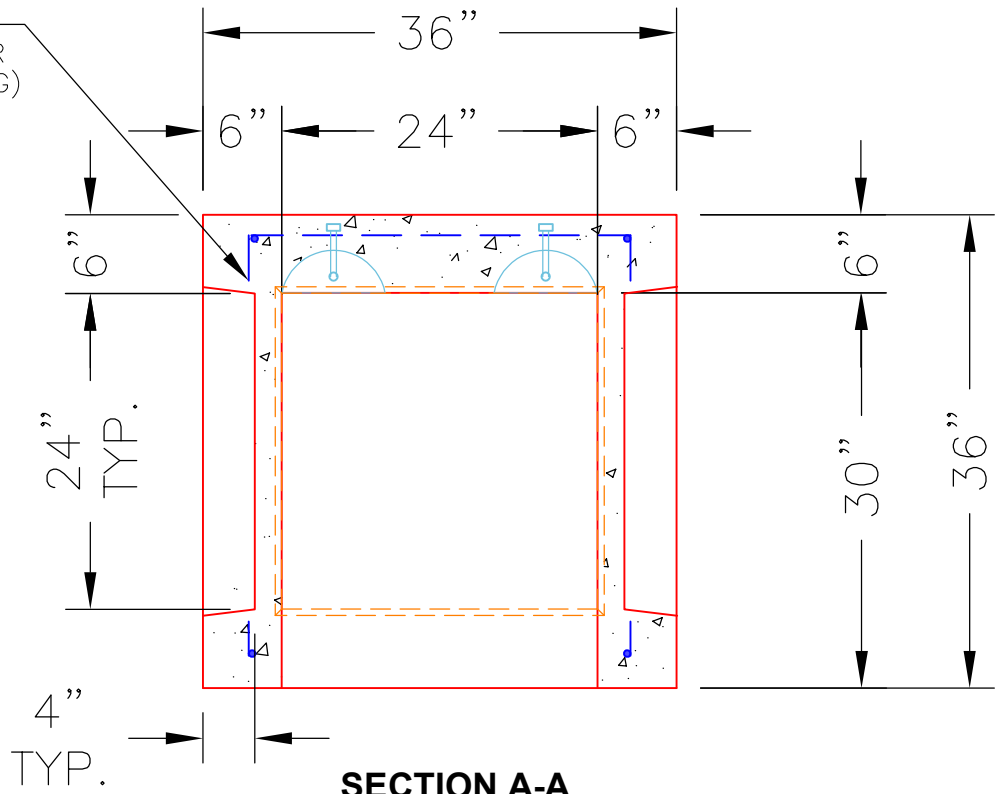
4 EA. 24"X24"X4"
KNOCKOUT PANELS
(TYPICAL ALL SIDES)

2 EA. CONAC 4CA14 LIFTING
ANCHORS CAST INTO FLOOR.



PLAN VIEW
(UPSIDE-DOWN)

#4 BAR WIRE FRAME
IN CORNERS & FLOOR
(TYPICAL REINFORCING)



SECTION A-A
(UPSIDE-DOWN)

GENERAL NOTES:

1. PER ASTM C-913 LATEST REVISION.
2. CONCRETE: 4,000 PSI AT 28 DAYS.
3. REINFORCING: #4 BAR WIRE FRAME (GRADE 60).

PRODUCTION WORK ORDER		PRODUCT I.D.: BX2424-06B30-KO	DESCRIPTION: KNOCKOUT CATCH BASIN 24"X24"X30" TALL		
	QUALITY CONTROL CHECKLIST	PRODUCT VIEW: UPSIDE-DOWN	CUSTOMER: STOCK		
	<input type="checkbox"/> ALL DIMENSIONS CORRECT.	PLANT: BEAVER DAM, KY.	PROJECT: STOCK		
	<input type="checkbox"/> LIFTERS INSTALLED.	WEIGHT: 1,735 LBS.	STRUCTURE ID.: N/A		
	<input type="checkbox"/> KNOCKOUT PANELS CORRECT.	TOP JOINT: FLAT	SALES ORDER NO: N/A		
	<input type="checkbox"/> REINFORCING CORRECT.	BOTTOM JOINT: N/A	CHK.: J.H. ROSS, PE	DRAWING: N. RICHARDS	
	<input type="checkbox"/> SURFACE QUALITY OKAY.	QC CHECK INITIALS:	DATE: 11/22/23	SCALE: NTS	PG. 1 of 1
<input type="checkbox"/> FLAT JOINT INSTALLED.					
<input type="checkbox"/> BASE CLEAN & FREE OF DEBRIS.					