

Job Name: 26-1997 ADS RJ Corman Railroad
 Job Location: Lexington, KY
 Contractor: ADS Advanced Drainage Systems, Inc.

Plant: Beaver Dam
 4/24/2026 12:06:56 PM

Tech: S. Felletter
 PC: C. Goff



Structure ID: MTD

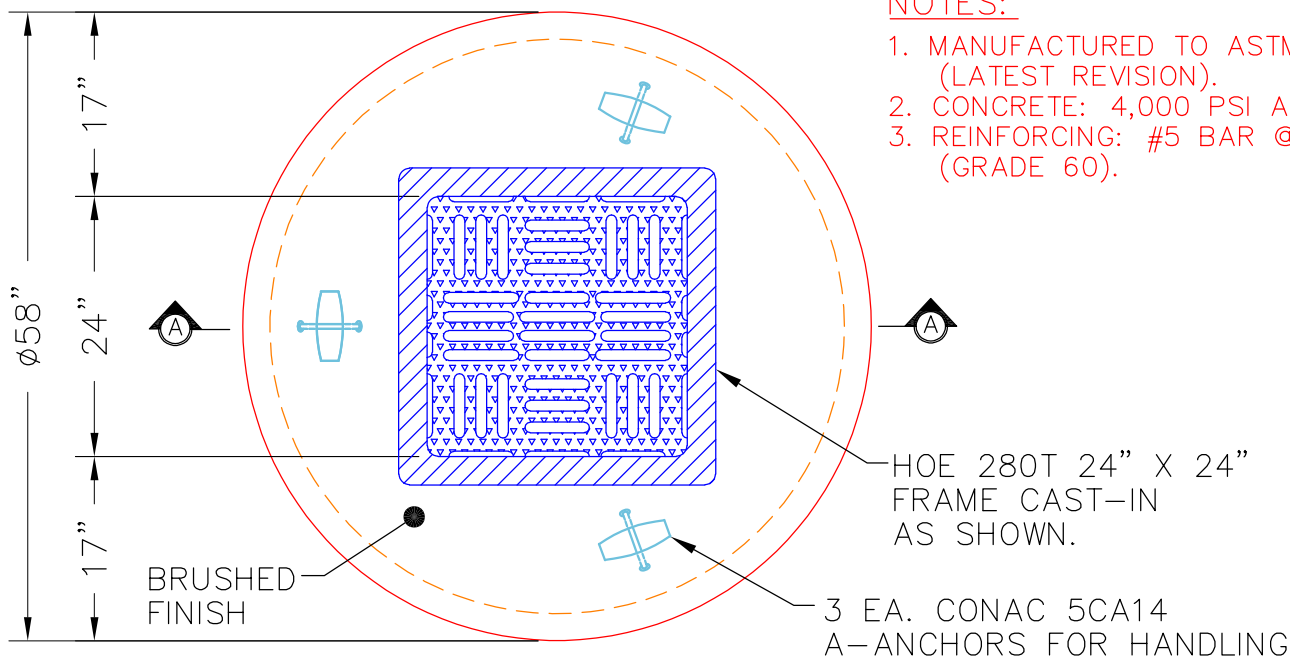
P4 MH048LD12S

MH FLAT TOP SPECIAL (HOE-280T) F/G

- P5) 24" x 24" - CASTING HEIGHT - 0"
- P4) 48" - MH FLAT TOP SPECIAL (HOE-280T) F/G - 12"
- P3) 48" - MH RISER Custom Ht T/G - 55"
- P2) 48" - MH RISER Custom Ht T/G - 27"
- P1) 48" - MH BASE T/h - 18"
- 1) JOINT WRAP - 0.065"x6"x50' CONSEAL CS212
- 1) JOINT WRAP PRIMER - CONSEAL CS-75 (1 gal.)
- 1) ASSEMBLY REQUIRED
- 1) This Structure Includes a Cast-in Item
- 1) CASTING - HOE 280T F/G
- 3) 48" - Conseal CS-102 1.00" (Double)
- 1) 24" x 24" - Conseal CS-102 1.00" (Double)
- 1) Hole - 12

- Structure Notes:**
1. PER ASTM C478 SPECIFICATIONS.
 2. CONCRETE = 4,000 PSI AT 28 DAYS.
 3. CASTING BY ICAST (HOE 280T F/G CAST-IN).
 4. P2 & P3 RISERS TO BE MECHANICALLY ATTACHED.
- REINFORCING PER ASTM A615 (GRADE 60).
 - TOP SLAB (As .62) #5 BARS AT 6" C.C.E.W..
 - RISER/WALLS (As .12)
 - FLOOR (As .31) #5 BARS AT 12" C.C.E.W.

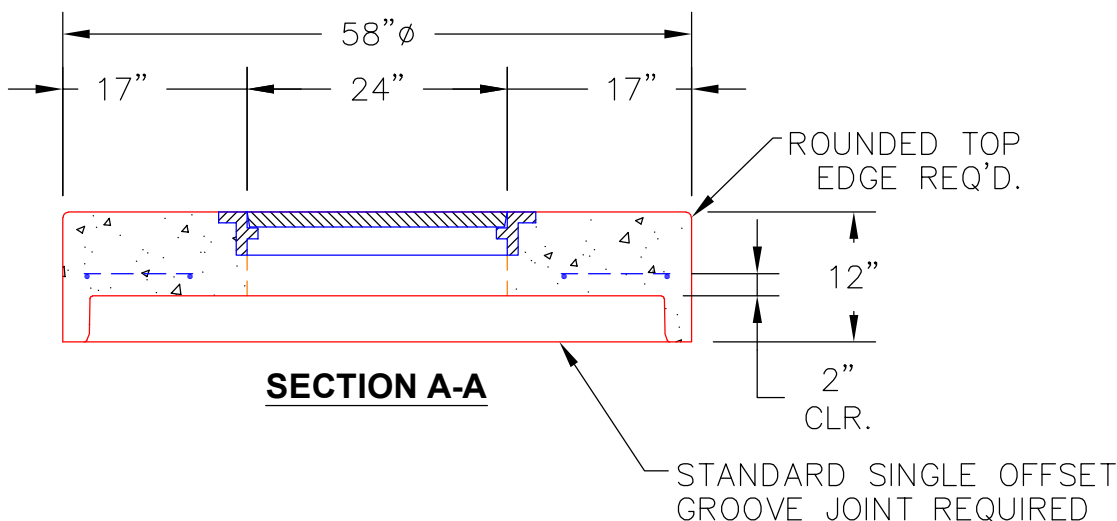
Structure Total: 9985 lb



NOTES:

1. MANUFACTURED TO ASTM C-478 (LATEST REVISION).
2. CONCRETE: 4,000 PSI AT 28 DAYS.
3. REINFORCING: #5 BAR @ 6" C.C. E.W. (GRADE 60).

PLAN VIEW



Coating (Int):
 Coating (Ext):

Seam Up: Flat
 Seam Dn: Groove

Wall Thickness: 5"

Height (Ext): 12"

Weight (Net): 1535 lb
 Volume (Net): 0.39cu.yd