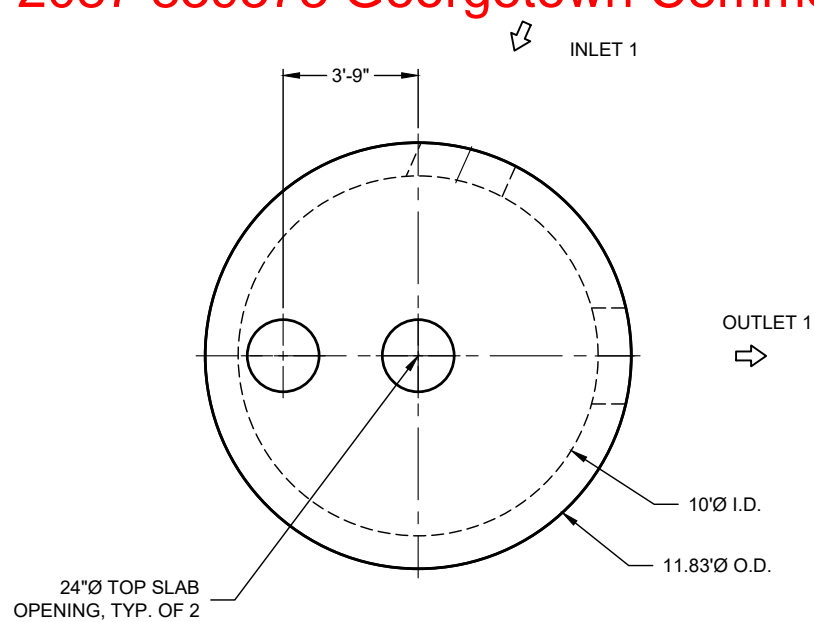
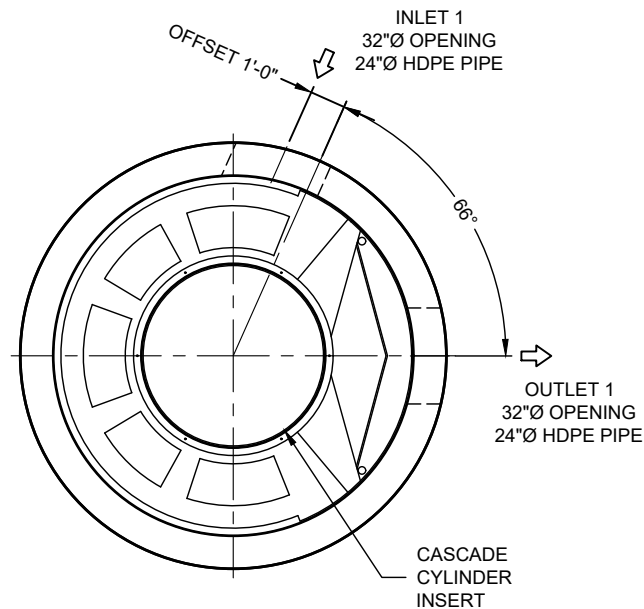


# 26-2087 839373 Georgetown Commons



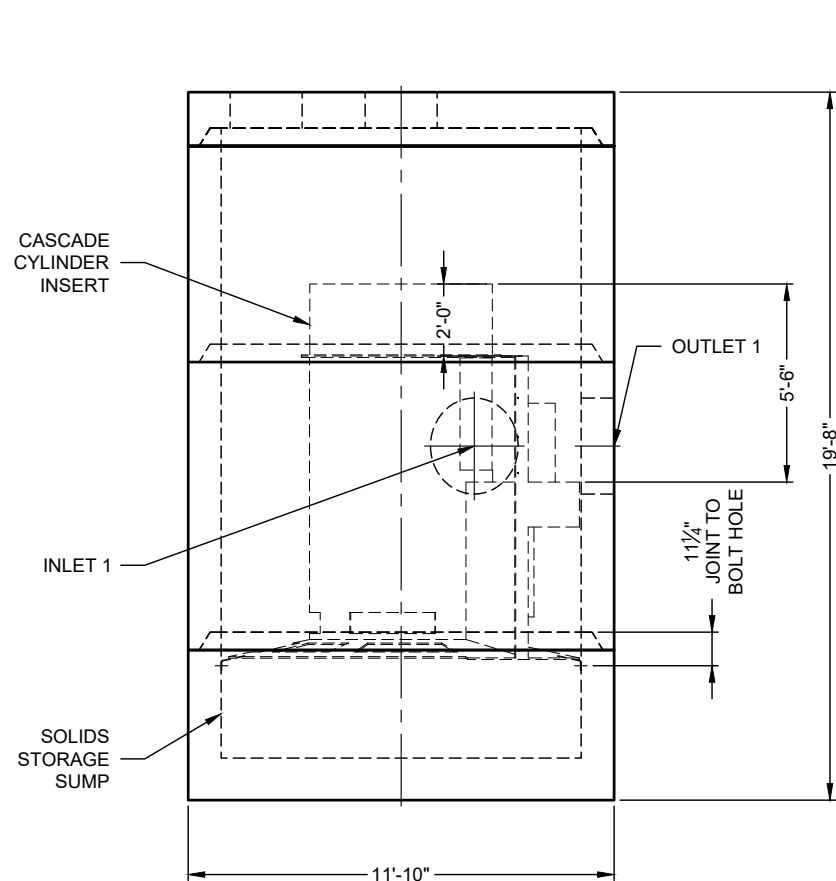
**PLAN VIEW**  
INTERNALS NOT SHOWN



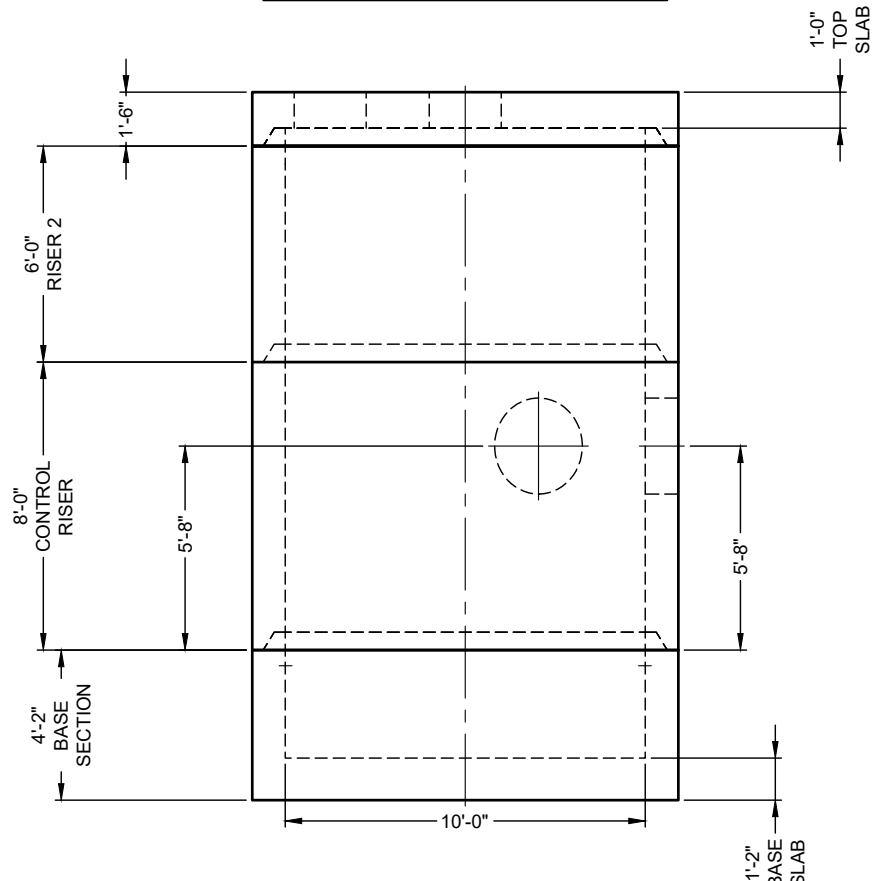
**PLAN VIEW FOR PIPE ORIENTATION**  
TOP SLAB NOT SHOWN

INTERNAL COMPONENTS TO BE INSTALLED ON SITE BY CONTECH FIELD CONSULTANT. PRECASTER TO SHIP ALL INTERNAL COMPONENTS WITH STRUCTURE

SEE INSTALLATION NOTE A



**ELEVATION VIEW**



**PRECAST COMPONENTS**  
INTERNALS NOT SHOWN

ICAST  
5888 / 757440  
LAYOUT 1A  
57.90TS

CONTECH  
**FABRICATION**  
DRAWING

## MATERIAL LIST

COUNT	DESCRIPTION	PART NUMBER	PROVIDED BY	INSTALLED BY
1	CS-10 CYLINDER INSERT, STD	325-003976	CONTECH	CONTRACTOR
1	CS-10 CYLINDER TOP	325-003988	CONTECH	CONTRACTOR
8	CS-10 ALUMINUM INSTALLATION BRACKETS	325-003971	CONTECH	PRECASTER
1	CS-10 HARDWARE KIT	325-003977	CONTECH	CONTRACTOR
1	SEALANT FOR JOINTS		PRECASTER	CONTRACTOR
2	24"Ø X 4" FRAME AND COVER, EJ #41600389, OR EQUIV.	325-000350	CONTECH	CONTRACTOR

## GENERAL NOTES

- DESIGN LOADING - AASHTO HS-20
- ALL PRECAST CONCRETE MANUFACTURED PARTS SHALL CONFORM TO ASTM C-478, WITH MINIMUM CONCRETE STRENGTH OF 4000 PSI AT 28 DAYS
- JOINT SEALANT SHALL CONFORM TO ASTM C-990 OR ASTM C-443
- GROUND WATER ELEVATION ASSUMED AT OUTLET INVERT
- MANUFACTURING TOLERANCE = +/- 1/2-INCH
- SOME HIDDEN LINES MAY BE OMITTED FOR CLARITY

## INSTALLATION NOTES

- PRECASTER TO SHIP ACCESS CASTINGS WITH STRUCTURE
- REFER TO CONTECH ASSEMBLY INSTRUCTIONS FOR ADDITIONAL INFORMATION.
- PRECASTER TO INSTALL INTERNAL COMPONENTS PRIOR TO SHIPPING UNLESS INSTRUCTED OTHERWISE BY CONTECH
- PIPE OPENINGS SHALL BE STENCILED "INLET" OR "OUTLET" AS APPROPRIATE
- APPLYING ALIGNMENT MARKS ON ALL PIECES OF MULTIPLE PIECE ASSEMBLIES IS ENCOURAGED
- IF STRUCTURE IS DELIVERED IN MULTIPLE SECTIONS, EACH PIECE SHALL BE LABELED WITH THE CONTECH PROJECT NUMBER, SEQUENCE NUMBER AND SITE DESIGNATION

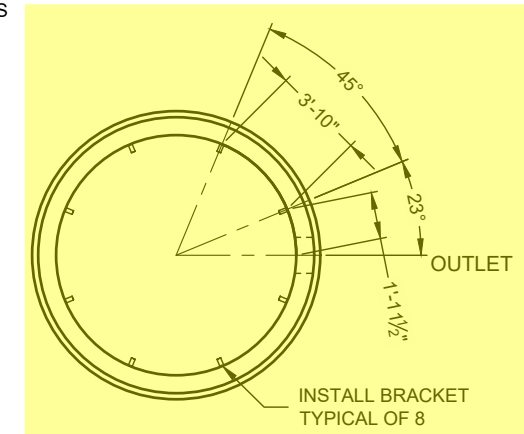
## SITE INFORMATION

RIM ELEV. = 872.5+/-  
TOP OF STRUCTURE = 871.68  
INLET PIPE 1 INVERT ELEV. = 860.85  
INLET PIPE 1 DIAMETER AND MATERIAL = 24"Ø HDPE  
OUTLET PIPE INVERT ELEV. = 860.85  
OUTLET PIPE DIAMETER AND MATERIAL = 24"Ø HDPE  
OUTSIDE BOTTOM OF STRUCTURE ELEV. = 852.01

## STRUCTURE WEIGHT

APPROXIMATE HEAVIEST PICK = 38500 LBS.  
STRUCTURE IS DELIVERED IN 4 PIECES

TOP SLAB = 17500 LBS.  
RISER 2 = 29500 LBS.  
CONTROL RISER = 38500 LBS.  
BASE SECTION = 36000 LBS.



**SUPPORT BRACKET LAYOUT PLAN VIEW**

The design and information shown on this drawing is the property of CONTECH Construction Products, Inc. or one of its affiliated companies ("CONTECH"). Neither this drawing, nor any part thereof, may be used, copied, reproduced, or transmitted in any form or by any means, electronic or mechanical, including photocopying, recording, or by any information storage and retrieval system, without the prior written consent of CONTECH. Failure to comply with these terms and conditions shall constitute an acknowledgment of the user's own risk and CONTECH expressly disclaims any liability or responsibility for such use. If discrepancies between the supplied information upon which the drawing is based and actual field conditions are encountered as site work progresses, these are to be immediately reported to the design engineer. CONTECH immediately for re-evaluation of the design. CONTECH accepts no liability for designs based on missing, incomplete or inaccurate information supplied by others.

MARK	DATE	REVISION DESCRIPTION	BY

CS-10 - 839373-75  
GEORGETOWN COMMONS TRACT 2  
BUILD-OUT  
GEORGETOWN, KY  
SITE DESIGNATION: #145 WQU

**CONTECH**  
ENGINEERED SOLUTIONS LLC  
A CONTECH COMPANY  
810 Centre Pointe Dr., Suite 403, West Chester, OH 45380  
800.338.1122 513.645.7000 513.645.7803 FAX  
FOR PATENT INFORMATION, GO TO www.contech.com/FP

DATE:	4/10/2026		
DESIGNED:	MDB	DRAWN:	MDB
CHECKED:	LJK	APPROVED:	MDB
PROJECT No.:	839373	SEQUENCE No.:	75
SHEET:	1	OF	1