

Job Name: 26-2087 839373 Georgetown Commons  
 Job Location: Georgetown, KY  
 Contractor: Contech Engineering Solutions

Plant: Beaver Dam  
 4/28/2026 12:53:54 PM

Tech: S. Felletter  
 PC: C. Goff



**Structure ID: 20-CS-12**

**P5 MH144LD18**

**MH FLAT TOP w/ 24" ECC Hole F/G**

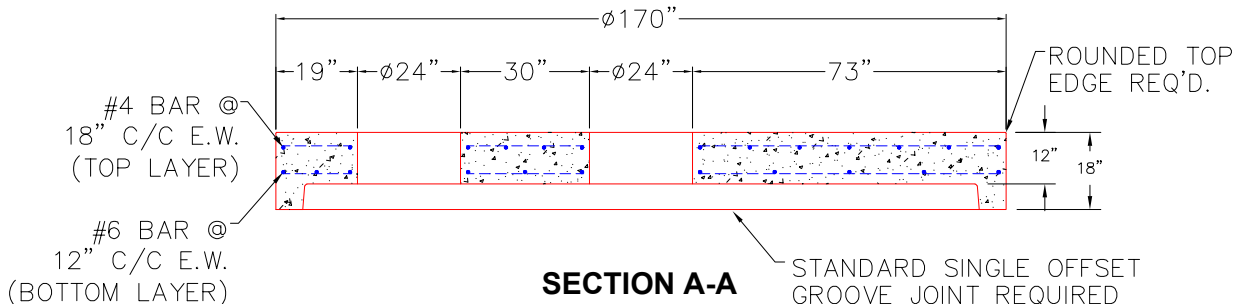
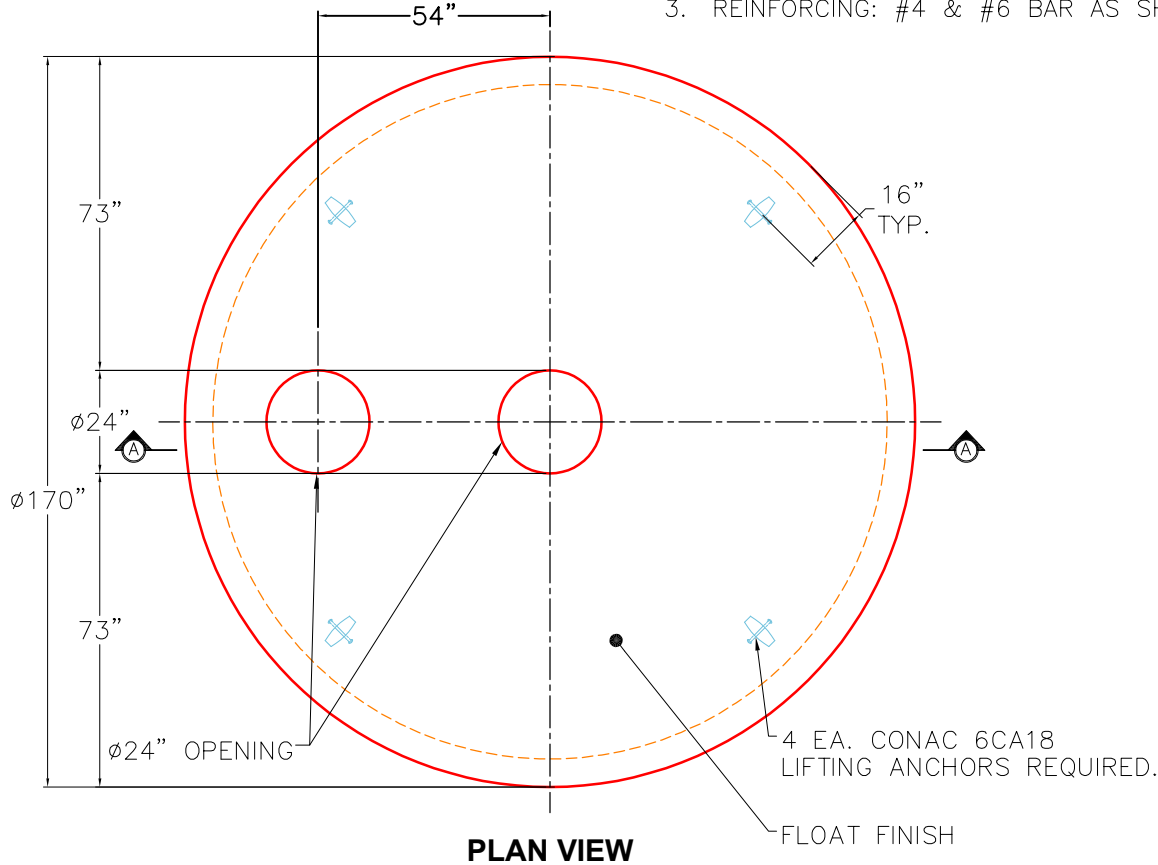
- P6) 24" - CASTING HEIGHT - 4"
- P5) 144" - MH FLAT TOP w/ 24" ECC Hole F/G - 18"
- P4) 144" - MH RISER T/G - 36"
- P3) 144" - MH RISER T/G - 84"
- P2) 144" - MH RISER T/G - 60"
- P1) 144" - MH MONOBASE 14F, Custom Ht T/n - 24"
- 1) CVSTENCILING
- 1) ASSEMBLY REQUIRED - BRACKETS ONLY
- 4) 144" - Conseal CS-102 1.00"
- 2) Hole - 44

0 lb  
 24911 lb  
 19370 lb  
 41809 lb  
 32283 lb  
 39578 lb  
 0 lb  
 0 lb  
 0 lb  
 0 lb  
 -----  
 Structure Total: 157950 lb

**Structure Notes:**  
 4" CASTING BY OTHERS  
 LIFTING ANCHORS TO BE INSTALLED ON THE OUTSIDE OF THE STRUCTURE  
 ICAST TO INSTALL BRACKETS ONLY  
 CONTECH'S LOGO AS WELL AS THE INLET AND OUTLET MUST BE STENCILED ONTO THE STRUCTURE

GENERAL NOTES:

1. MANUFACTURED TO ASTM C-478 (LATEST REVISION).
2. CONCRETE 5,000 PSI AT 28 DAYS.
3. REINFORCING: #4 & #6 BAR AS SHOWN (GRADE 60).



Coating (Int):  
 Coating (Ext):

Seam Up: Flat  
 Seam Dn: Groove

Wall Thickness: 13"

Height (Ext): 18"

Weight (Net): 24911 lb  
 Volume (Net): 6.36cu.yd