

Job Name: 26-2087 839373 Georgetown Commons  
 Job Location: Georgetown, KY  
 Contractor: Contech Engineering Solutions

Plant: Beaver Dam  
 4/27/2026 2:29:17 PM

Tech: S. Felletter  
 PC: C. Goff



**Structure ID: 15-CS-12**

**P5 MH144LD18SP**

**MH FLAT TOP SPEC. (2 - 24"Ø HOLES) F/G**

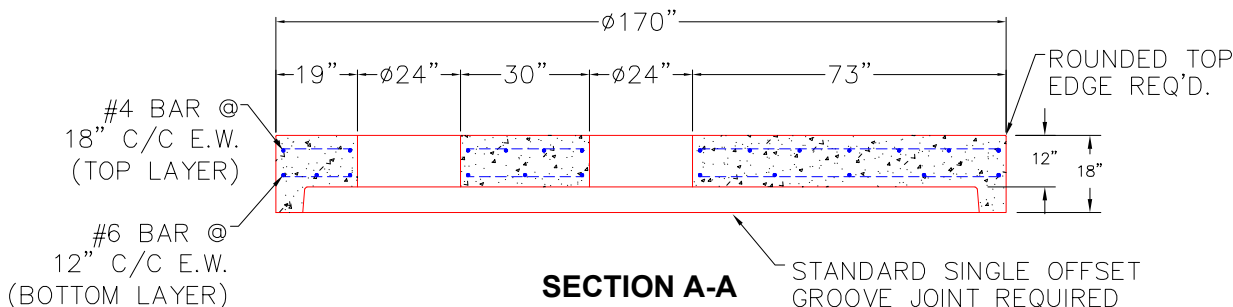
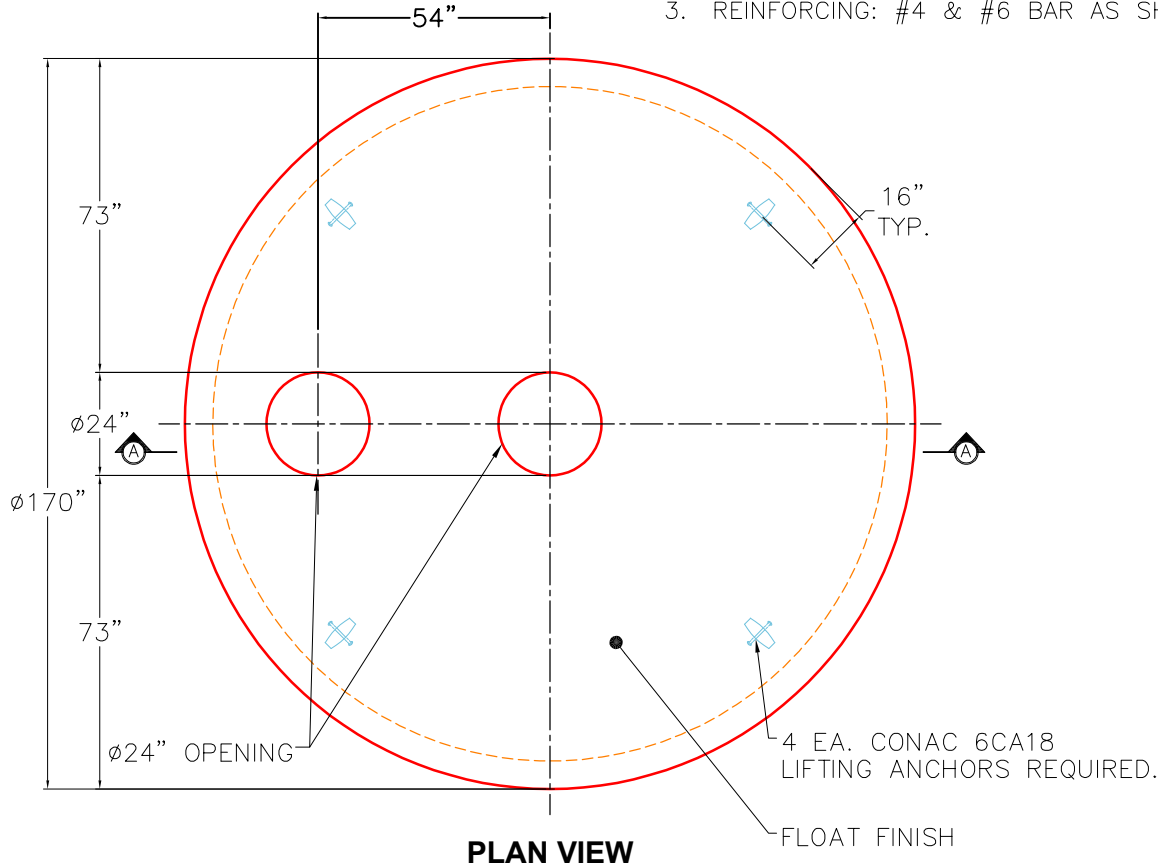
- P6) 24" - CASTING HEIGHT - 4"
- P5) 144" - MH FLAT TOP SPEC. (2 - 24"Ø HOLES) F/G - 18"
- P4) 144" - MH RISER T/G - 36"
- P3) 144" - MH RISER T/G - 84"
- P2) 144" - MH RISER T/G - 60"
- P1) 144" - MH MONOBASE 14F, Custom Ht T/n - 24"
- 1) CVSTENCILING
- 1) ASSEMBLY REQUIRED - BRACKETS ONLY
- 4) 144" - Conseal CS-102 1.00"
- 2) Hole - 44

0 lb  
 23623 lb  
 19370 lb  
 41809 lb  
 32283 lb  
 39578 lb  
 0 lb  
 0 lb  
 0 lb  
 0 lb  
 -----  
 Structure Total: 156662 lb

**Structure Notes:**  
 4" CASTING BY OTHERS  
  
 LIFTING ANCHORS TO BE INSTALLED  
 ON THE OUTSIDE OF THE STRUCTURE  
  
 ICAST TO INSTALL BRACKETS ONLY  
  
 CONTECH'S LOGO AS WELL AS THE  
 INLET AND OUTLET MUST BE  
 STENCILED ONTO THE STRUCTURE

GENERAL NOTES:

1. MANUFACTURED TO ASTM C-478 (LATEST REVISION).
2. CONCRETE 5,000 PSI AT 28 DAYS.
3. REINFORCING: #4 & #6 BAR AS SHOWN (GRADE 60).



Coating (Int):  
 Coating (Ext):

Seam Up: Flat  
 Seam Dn: Groove

Wall Thickness: 13"

Height (Ext): 18"

Weight (Net): 23623 lb  
 Volume (Net): 6.03cu.yd