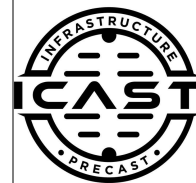


Job Name: 26-2087 839373 Georgetown Commons
 Job Location: Georgetown, KY
 Contractor: Contech Engineering Solutions

Plant: Beaver Dam
 4/27/2026 2:29:58 PM

Tech: S. Felletter
 PC: C. Goff



Structure ID: 10-CS-10

P4 MH120LD18SP

MH FLAT TOP SPEC. (2 - 24"Ø HOLES) F/G

- P5) 24" - CASTING HEIGHT - 4"
- P4) 120" - MH FLAT TOP SPEC. (2 - 24"Ø HOLES) F/G - 18"
- P3) 120" - MH RISER NO STEPS T/G - 36"
- P2) 120" - MH RISER NO STEPS T/G - 84"
- P1) 120" - MH MONOBASE 14F, Custom Ht T/n - 48"
- 1) CVSTENCILING
- 1) ASSEMBLY REQUIRED - BRACKETS ONLY
- 3) 120" - Conseal CS-102 1.00"
- 2) Hole - 32

0 lb
 16223 lb
 13675 lb
 30395 lb
 36838 lb
 0 lb
 0 lb
 0 lb
 0 lb

 Structure Total: 97131 lb

Structure Notes:
 4" CASTING BY OTHERS

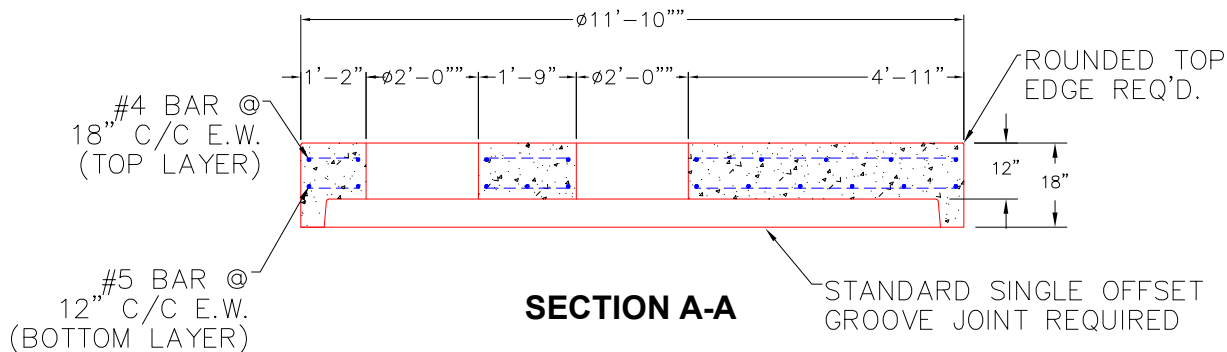
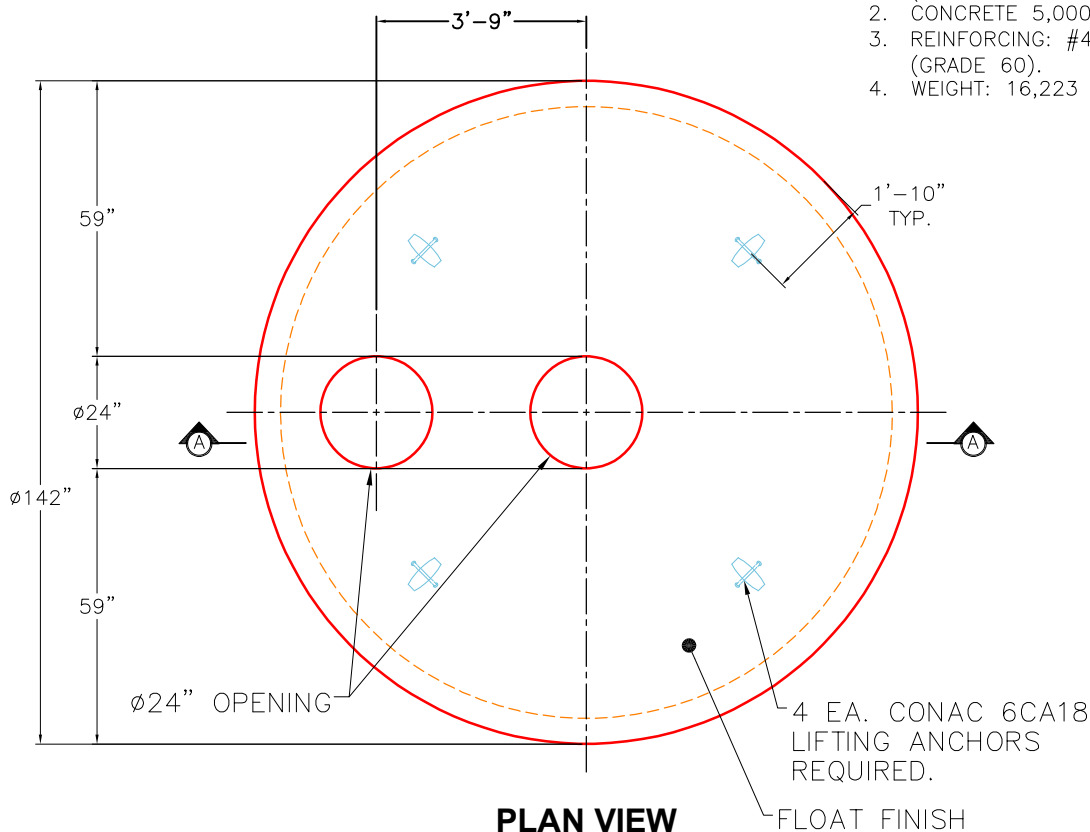
 LIFTING ANCHORS TO BE INSTALLED
 ON THE OUTSIDE OF THE STRUCTURE

 ICAST TO INSTALL BRACKETS ONLY

 CONTECH'S LOGO AS WELL AS THE
 INLET AND OUTLET MUST BE
 STENCILED ONTO THE STRUCTURE

GENERAL NOTES:

1. MANUFACTURED TO ASTM C-478 (LATEST REVISION).
2. CONCRETE 5,000 PSI AT 28 DAYS.
3. REINFORCING: #4 & #5 BAR AS SHOWN (GRADE 60).
4. WEIGHT: 16,223 LBS.



Coating (Int): Coating (Ext):	Seam Up: Flat Seam Dn: Groove	Wall Thickness: 11"	Height (Ext): 18"	Weight (Net): 16223 lb Volume (Net): 4.14cu.yd
----------------------------------	----------------------------------	---------------------	-------------------	---