

Job Name: 26-2037 830068 Marketplace
 Job Location: Georgetown, KY
 Contractor: Contech Engineering Solutions

Plant: Beaver Dam
 4/23/2026 11:53:38 AM

Tech: S. Felletter
 PC: S. Goff



Structure ID: 30-CS-10

P4 MH120LD18SP

MH FLAT TOP SPEC. (2 - 24"Ø HOLES) F/G

- P5) 24" - CASTING HEIGHT - 4"
- P4) 120" - MH FLAT TOP SPEC. (2 - 24"Ø HOLES) F/G - 18"
- P3) 120" - MH RISER T/G - 90"
- P2) 120" - MH RISER T/G - 96"
- P1) 120" - MH MONOBASE 14F, Custom Ht T/n - 36"
- 1) CVSTENCILING
- 1) ASSEMBLY REQUIRED - BRACKETS ONLY
- 3) 120" - Conseal CS-102 1.00"
- 2) Hole - 38

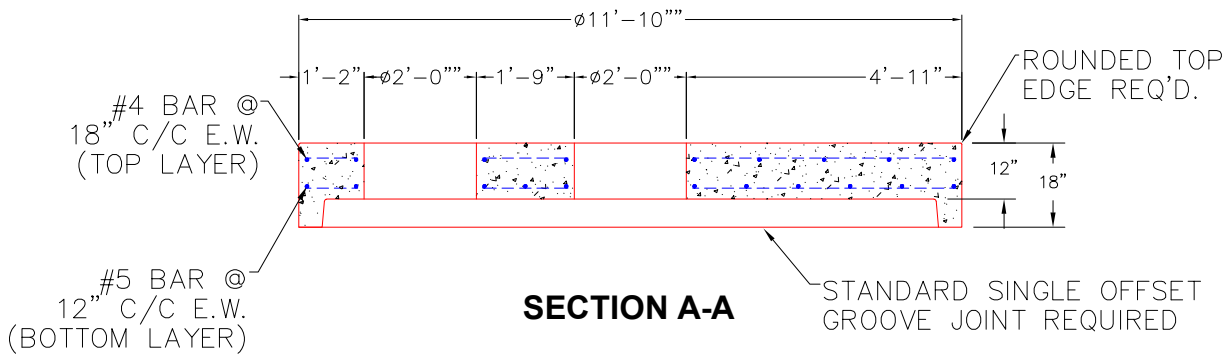
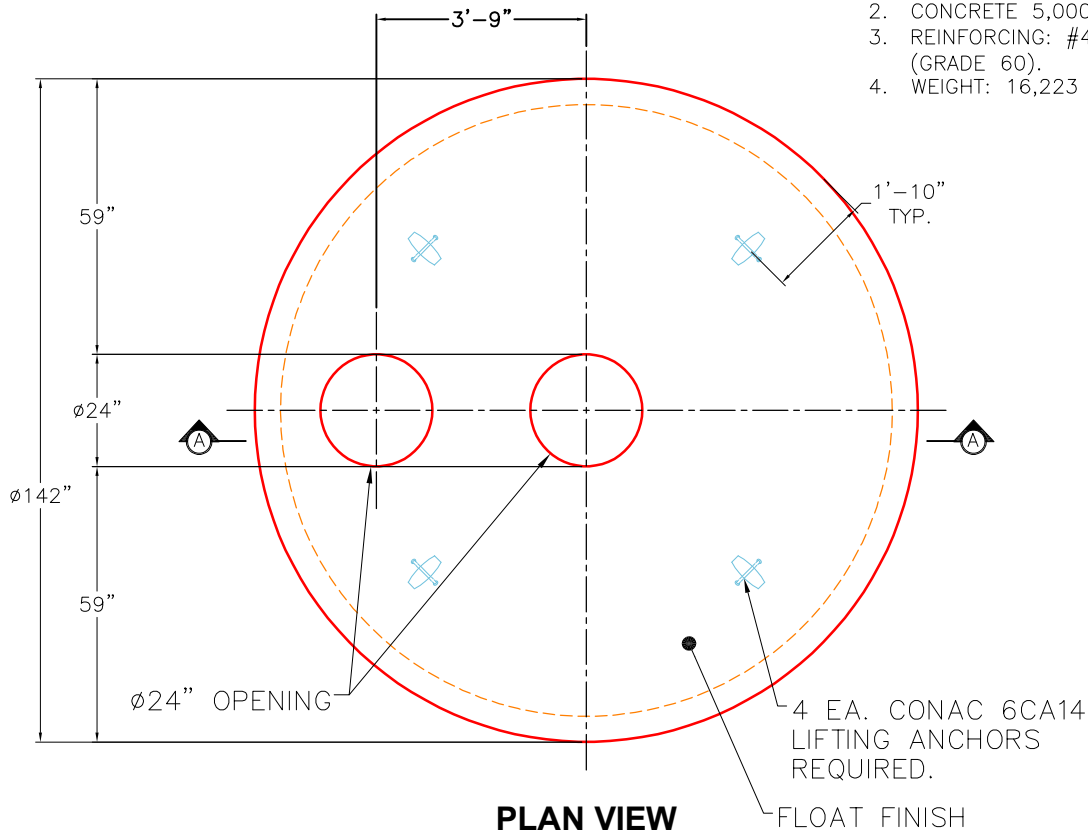
0 lb
 16223 lb
 34189 lb
 34322 lb
 32280 lb
 0 lb
 0 lb
 0 lb
 0 lb
 0 lb

 Structure Total: 117013 lb

Structure Notes:
 4" CASTING BY OTHERS
 ICAST TO INSTALL THE INTERNAL BRACKETS,
 INTERNAL COMPONENTS TO BE INSTALLED ON
 SITE BY CONTECH FIELD CONSULTANT
 CONTECH'S LOGO AS WELL AS THE
 INLET AND OUTLET MUST BE
 STENCILED ONTO THE STRUCTURE

GENERAL NOTES:

1. MANUFACTURED TO ASTM C-478 (LATEST REVISION).
2. CONCRETE 5,000 PSI AT 28 DAYS.
3. REINFORCING: #4 & #5 BAR AS SHOWN (GRADE 60).
4. WEIGHT: 16,223 LBS.



Coating (Int): Coating (Ext):	Seam Up: Flat Seam Dn: Groove	Wall Thickness: 11"	Height (Ext): 18"	Weight (Net): 16223 lb Volume (Net): 4.14cu.yd
----------------------------------	----------------------------------	---------------------	-------------------	---