

Job Name: 26-1978 - MVUD Combined Meter Vault
 Job Location: Franklin, TN
 Contractor: Core & Main LP (Nashville)

Plant: Beaver Dam, KY
 4/13/2026 3:25:38 PM

Tech: K. Cardwell
 PC: T. Lewis



Structure ID: QL1

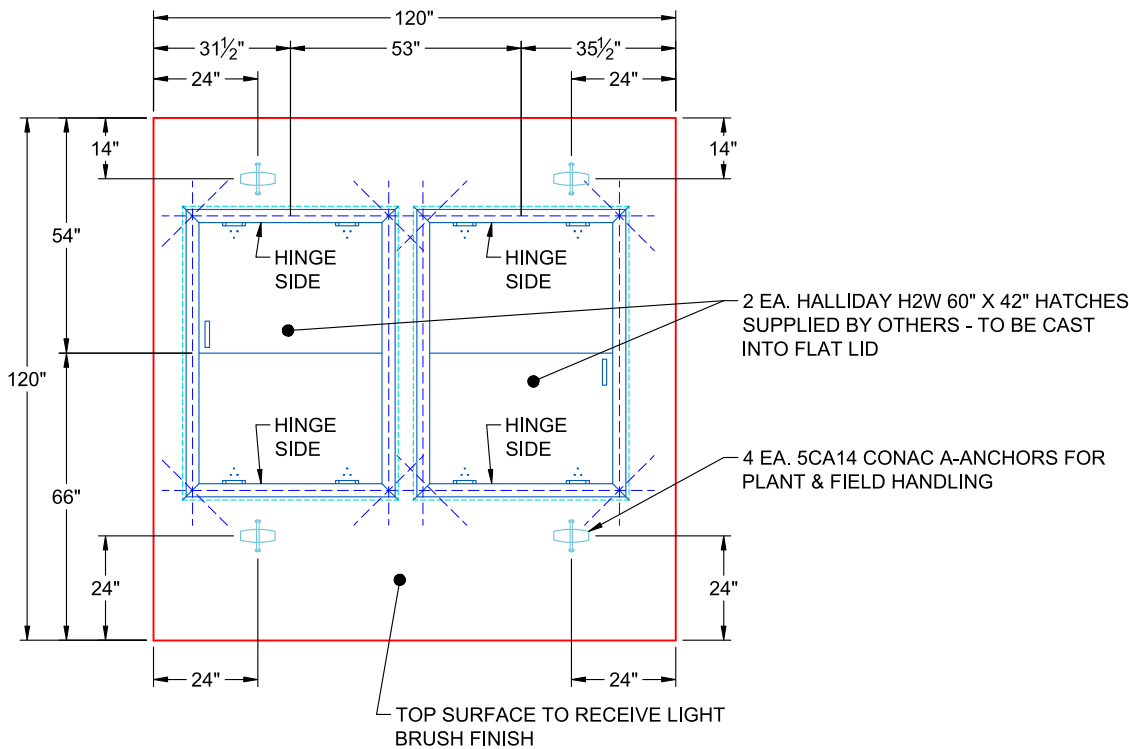
P2 BX108108-08LD06S

CB FLAT TOP 6"W w/(2) 60"x42" Hatches F/F

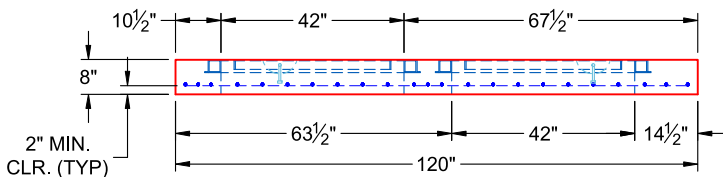
- P3) 60" x 42" - HATCH (CAST FLUSH) - 3"
- P2) 108" x 108" - CB FLAT TOP 6"W w/(2) 60"x42" Hatches F/F - 8"
- P1) 108" x 108" - BOX BASE 6inW, 6inF, Variable Ht F/n - 90"
- 1) SECONDARY POUR
- 1) This Structure Includes a Cast-in Item - 2 Ea. 60" x 42" Hatches Supplied by Others
- 1) 108" x 108" - Conseal CS-102 1.00"
- 2) Hole - 8
- 1) Hole - 10
- 1) Hole - 12
- 5) MH Step ML-10-TDS-NCR - 10"

0 lb
 6810 lb
 27765 lb
 0 lb
 0 lb
 0 lb
 0 lb
 0 lb
 0 lb
 0 lb
 0 lb
 Structure Total: 34575 lb

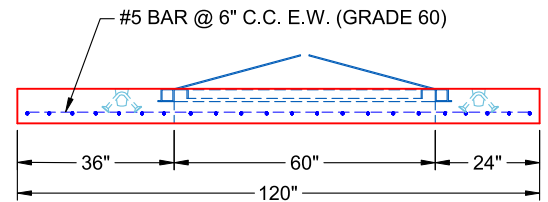
- Structure Notes:**
1. PER ASTM C-913 SPECIFICATIONS
 2. CONCRETE: 5,000 PSI AT 28 DAYS
 3. REINFORCEMENT: #5 BAR @ 6" C.C. E.W. (GRADE 60) - 2" MIN. REBAR CLEARANCE (TYP)
 4. 2 EA. HALLIDAY H2W 60" X 42" HATCHES SUPPLIED BY OTHERS - TO BE CAST INTO FLAT LID
 5. LIFTERS: 4 EA. 5CA14 CONAC A-ANCHORS FOR PLANT & FIELD HANDLING - INSTALLED AS SHOWN
 6. TOP SURFACE TO RECEIVE LIGHT BRUSH FINISH



**PLAN VIEW
(RIGHT SIDE UP)**



**FRONT VIEW
(RIGHT SIDE UP)**



**SIDE VIEW
(RIGHT SIDE UP)**

Coating (Int):
 Coating (Ext):

Seam Up: Flat
 Seam Dn: Flat

Wall Thickness: 6"

Height (Ext): 8"

Weight (Net): 6810 lb
 Volume (Net): 1.74cu.yd

Job Number:

26-1978

Job Name:

MVUD Combined Meter Vault

Structure:

QL1

Note:

2 Each Halliday H2W 60" x 42"
Hatches Supplied By Others To Be
Cast Into Flat Lid