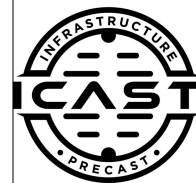


Job Name: 26-1978 - MVUD Combined Meter Vault
 Job Location: Franklin, TN
 Contractor: Core & Main LP (Nashville)

Plant: Beaver Dam, KY
 4/13/2026 11:23:56 AM

Tech: K. Cardwell
 PC: T. Lewis



Structure ID: QL1

P1 BX108108-06BAVF

BOX BASE 6inW, 6inF, Variable Ht F/n

- P3) 60" x 42" - HATCH (CAST FLUSH) - 3" 0 lb
- P2) 108" x 108" - CB FLAT TOP 6"W w/(2) 60"x42" Hatches F/F - 8" 6810 lb
- P1) 108" x 108" - BOX BASE 6inW, 6inF, Variable Ht F/n - 90" 27765 lb
- 1) SECONDARY POUR 0 lb
- 1) This Structure Includes a Cast-in Item - 2 Ea. 60" x 42" Hatches Supplied by Others 0 lb
- 1) 108" x 108" - Conseal CS-102 1.00" 0 lb
- 2) Hole - 8 0 lb
- 1) Hole - 10 0 lb
- 1) Hole - 12 0 lb
- 5) MH Step ML-10-TDS-NCR - 10" 0 lb

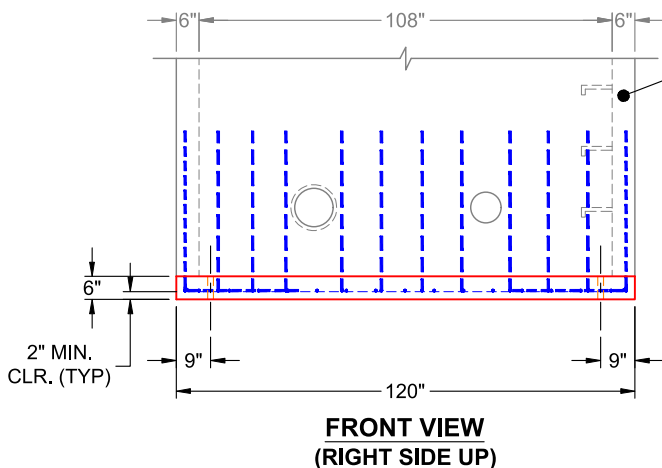
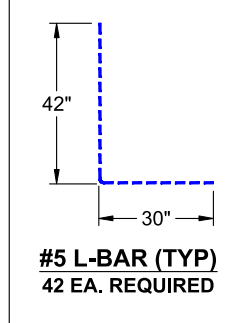
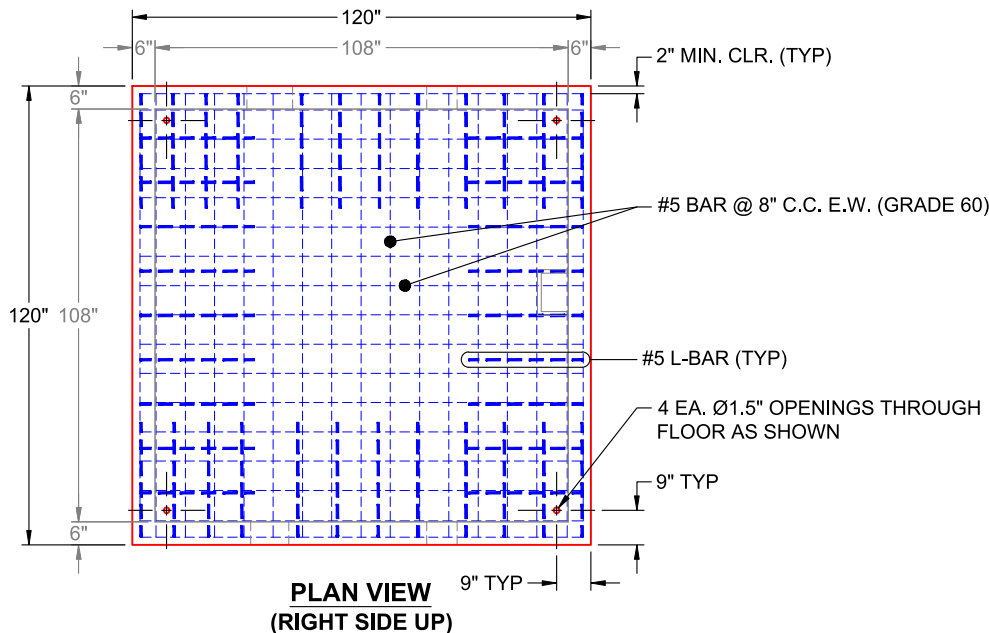
Structure Total: 34575 lb

- Structure Notes:**
1. PER ASTM C-913 SPECIFICATIONS
 2. CONCRETE: 5,000 PSI AT 28 DAYS
 3. REINFORCEMENT: #5 BAR @ 8" C.C. E.W. (GRADE 60) - 2" MIN. REBAR CLEARANCE (TYP)
 4. STEPS AT 270 DEGREES
 5. 2 EA. HALLIDAY H2W 60" X 42" HATCHES SUPPLIED BY OTHERS - TO BE CAST INTO FLAT LID
 6. 4 EA. 1.5" DIA. OPENINGS THROUGH FLOOR FOR DRAINAGE
 7. WET STICK 30" X 42" #5 L-BARS SPACED @ 12" C.C. E.W. (GRADE 60) OUT OF FLOOR FOR WALL POUR TIE-IN (SEE L-BAR DETAIL)

FIRST POUR (FLOOR): 7,250 LBS
SECOND POUR (WALLS): 20,515 LBS

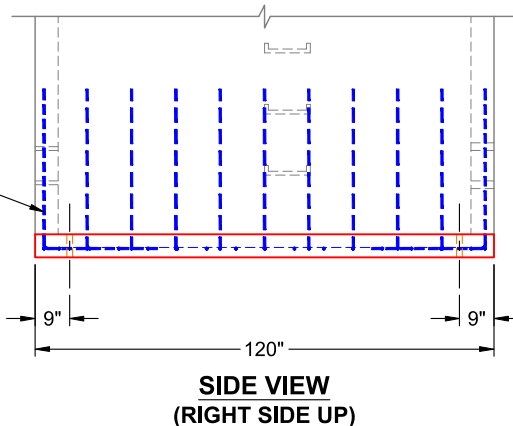
Rim: 8.167' Rim to Invert: 7' Slack: 0" Sump: 14" Step Position: 270°

Position	Elev	Angle	Ext. (cw)	Pipe	Pipe OD	Connector	Hole	Horz Size	Up (L)	Offset
Invert 1	1.33'	0°	39"	4" DI	4.75"	Hole 8	8"	8"	14"	-21"
Invert 2	1.25'	0°	84"	6" DI	6.875"	Hole 10	10"	10"	13"	24"
Invert 3	1.167'	180°	36"	8" DI	9"	Hole 12	12"	12"	12"	-24"
Invert 4	1.33'	180°	81"	4" DI	4.75"	Hole 8	8"	8"	14"	21"



WALL POUR - SEE SECOND POUR DRAWING

WET STICK #5 L-BARS SPACED @ 12" C.C. E.W. (GRADE 60) OUT OF FLOOR FOR WALL POUR TIE-IN (SEE L-BAR DETAIL)



Coating (Int): Coating (Ext):	Seam Up: Flat Seam Dn: n/a	Wall Thickness: 6" Floor Height: 6"	Height (Int): 90" Height (Ext): 96"	Weight (Net): 27765 lb Volume (Net): 7.09cu.yd
----------------------------------	-------------------------------	--	--	---

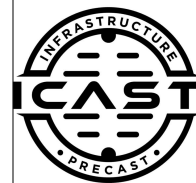
Job Name: 26-1978 - MVUD Combined Meter Vault
 Job Location: Franklin, TN
 Contractor: Core & Main LP (Nashville)

Plant: Beaver Dam, KY

Tech: K. Cardwell

4/13/2026 11:23:56 AM

PC: T. Lewis



Structure ID: QL1

P1 BX108108-06BAVF

BOX BASE 6inW, 6inF, Variable Ht F/n

- P3) 60" x 42" - HATCH (CAST FLUSH) - 3"
- P2) 108" x 108" - CB FLAT TOP 6"W w/(2) 60"x42" Hatches F/F - 8"
- P1) 108" x 108" - BOX BASE 6inW, 6inF, Variable Ht F/n - 90"
- 1) SECONDARY POUR
- 1) This Structure Includes a Cast-in Item - 2 Ea. 60" x 42" Hatches Supplied by Others
- 1) 108" x 108" - Conseal CS-102 1.00"
- 2) Hole - 8
- 1) Hole - 10
- 1) Hole - 12
- 5) MH Step ML-10-TDS-NCR - 10"

0 lb
 6810 lb
 27765 lb
 0 lb
 0 lb
 0 lb
 0 lb
 0 lb
 0 lb
 0 lb
 0 lb
 0 lb
 Structure Total: 34575 lb

- Structure Notes:
1. PER ASTM C-913 SPECIFICATIONS
 2. CONCRETE: 5,000 PSI AT 28 DAYS
 3. REINFORCEMENT: #5 BAR @ 8" C.C. E.W. (GRADE 60) - 2" MIN. REBAR CLEARANCE (TYP)
 4. STEPS AT 270 DEGREES
 5. 2 EA. HALLIDAY H2W 60" X 42" HATCHES SUPPLIED BY OTHERS - TO BE CAST INTO FLAT LID
 6. LIFTERS: 4 EA. 6CA18 CONAC A-ANCHORS FOR PLANT & FIELD HANDLING - INSTALLED IN 90° & 270° WALLS, MIN. 24" FROM TOP OF WALLS

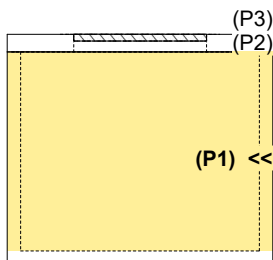
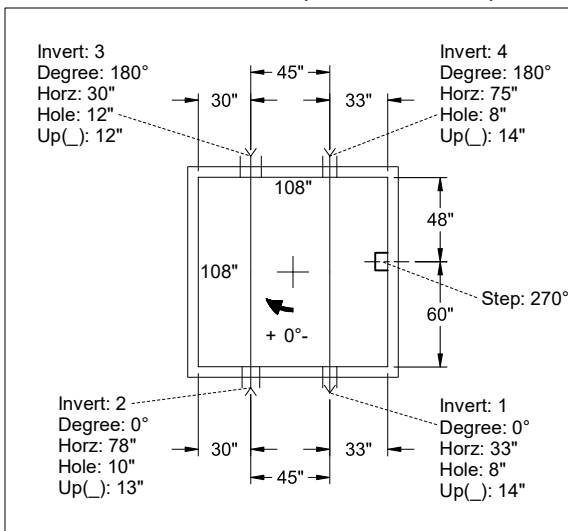
FIRST POUR (FLOOR): 7,250 LBS
SECOND POUR (WALLS): 20,515 LBS

Rim: 8.167' Rim to Invert: 7' Slack: 0" Sump: 14" Step Position: 270°

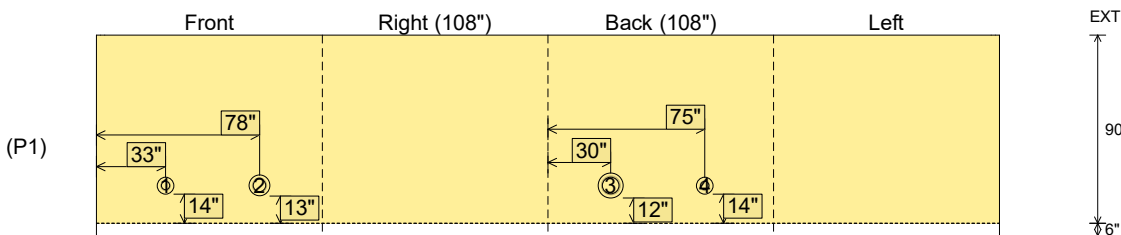
Position	Elev	Angle	Ext. (cw)	Pipe	Pipe OD	Connector	Hole	Horz Size	Up ()	Offset
Invert 1	1.33'	0°	39"	4" DI	4.75"	Hole 8	8"	8"	14"	-21"
Invert 2	1.25'	0°	84"	6" DI	6.875"	Hole 10	10"	10"	13"	24"
Invert 3	1.167'	180°	36"	8" DI	9"	Hole 12	12"	12"	12"	-24"
Invert 4	1.33'	180°	81"	4" DI	4.75"	Hole 8	8"	8"	14"	21"
Invert 5										
Invert 6										
Invert 7										
Invert 8										

RIGHT-SIDE UP VIEW (int. dimensions)

UPSIDE-DOWN VIEW (int. dimensions)



INSIDE WALL DIMENSIONS



Coating (Int):
 Coating (Ext):

Seam Up: Flat
 Seam Dn: n/a

Wall Thickness: 6"
 Floor Height: 6"

Height (Int): 90"
 Height (Ext): 96"

Weight (Net): 27765 lb
 Volume (Net): 7.09cu.yd