

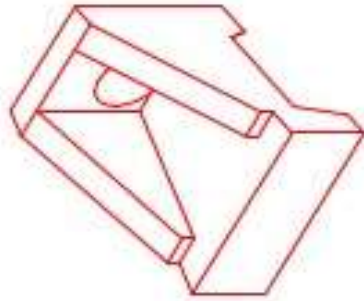


Structure ID: 5 HW

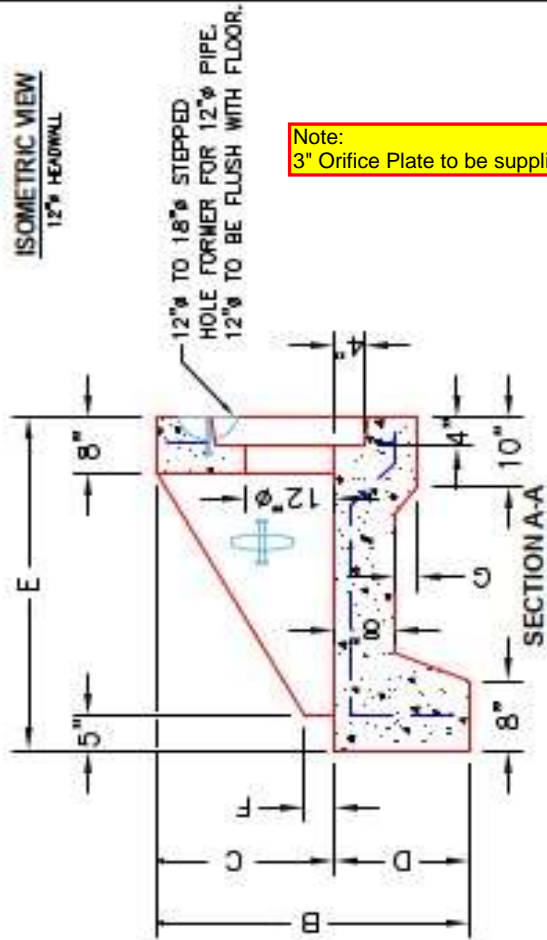
P1 HWSF12

12" - SLOPED & FLARED HEADWALL F/F

| DIMENSIONS | | | | | | | | | | |
|------------|-------|-------|-------|-------|-------|----|----|-------|-------|------------|
| PIPE Ø | A | B | C | D | E | F | G | H | I | WEIGHT |
| 12" | 2'-8" | 3'-6" | 2'-0" | 1'-8" | 4'-0" | 3" | 2' | 1'-8" | 4'-9" | 3,161 LBS. |

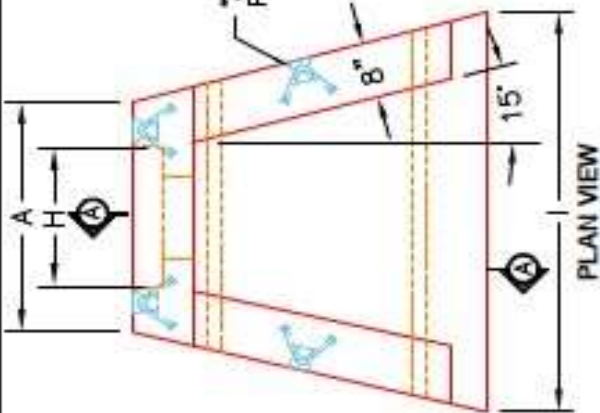


ISOMETRIC VIEW
12" HEADWALL

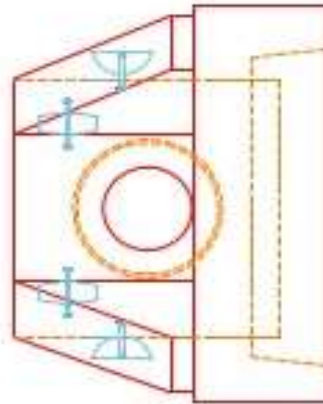


Note:
3" Orifice Plate to be supplied by others

"A"-ANCHOR LIFTING SYSTEM FOR PLANT & FIELD HANDLING.



PLAN VIEW



FRONT ELEVATION

- NOTES:**
1. CONCRETE: 4500 PS @ 28 DAYS.
 2. REINFORCING: #4 BAR @ 12" C/C E/W - GRADE 60, (WITH 2" CONCRETE COVER MINIMUM)
 3. REINFORCING BARS TO BE TACK WELDED OR TIED.
 4. DRAWING TO BE USED IN CONJUNCTION WITH KYTC STD. DRAWING RDH-020-03 AND THE STANDARD SPECIFICATIONS FOR ROAD AND BRIDGE CONSTRUCTION.
 5. CHAMFER ON ALL EXPOSED EDGES.

| PRODUCTION WORK ORDER | |
|-----------------------------|--|
| PRODUCT I.D.: HWSF12 | DESCRIPTION: KYTC 12" SLOPED & FLARED HEADWALL |
| PRODUCT VIEW: RIGHT SIDE UP | CUSTOMER: STOCK |
| PLANT: BEAVER DAM, KY. | PROJECT: STOCK INVENTORY |
| WEIGHT: 3,161 LBS. | STRUCTURE I.D.: N/A |
| TOP SECTION JOINT: N/A | QUOTE/SALES ORDER NO: N/A |
| BASE SECTION JOINT: N/A | CHECK: J.H. ROSS, PE DRAWING: N. RICHARDS |
| QC CHECK INITIALS: | DATE: 08/15/22 SCALE: NTS PG. 1 of 1 |



THIS DRAWING IS THE PROPERTY OF INFRASTRUCTURE PRECAST, INC. ANY USE OR DUPLICATION OF THIS DRAWING WITHOUT PRIOR AUTHORIZATION IS STRICTLY PROHIBITED.