

Job Name: 26-1961 - Dollar Tree
 Job Location: Hanson, KY
 Contractor: Steve Pleasant Excavating

Plant: 100
 4/30/2026 12:58:08 PM

Tech: Jared - F
 PC: E. Bradley



Structure ID: 1 SS-MHD

P2 MH048LD12ECC

MH FLAT TOP w/ 24" ECC Hole F/G

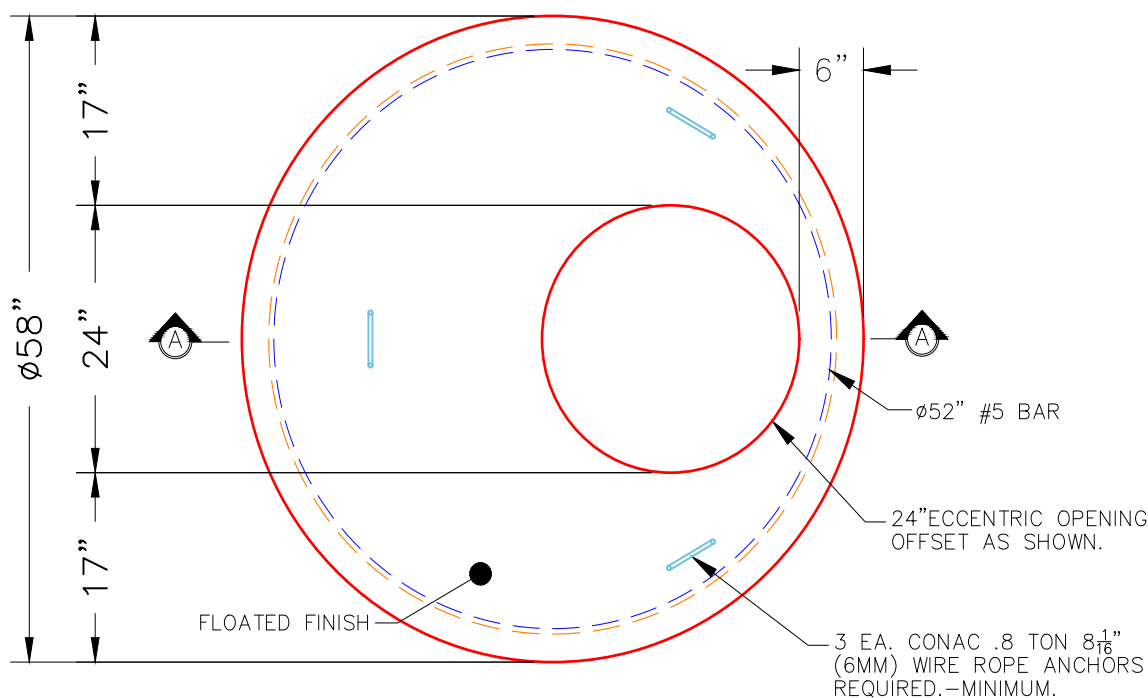
- P3) 24" - CASTING HEIGHT - 7"
- P2) 48" - MH FLAT TOP w/ 24" ECC Hole F/G - 12"
- P1) 48" - MH BASE w/DROP Custom Ht T/n - 65"
- 1) 48" - MH INVERT CHANNEL - FULL HEIGHT
- 1) JOINT WRAP - 12" WD x 048" MAC WRAP
- 1) CASTING - HOE MC-375 F/C Sanitary
- 1) 48" - Conseal CS-102 1.00" (Double)
- 1) A-Lok - 0285
- 1) Drop Tee - 4" PVC
- 1) Drop Elbow - 4" PVC
- 5) MH Step ML-10-TDS-NCR - 10"

0 lb
 1561 lb
 8888 lb
 1440 lb
 0 lb
 271 lb
 0 lb
 1 lb
 0 lb
 0 lb
 0 lb

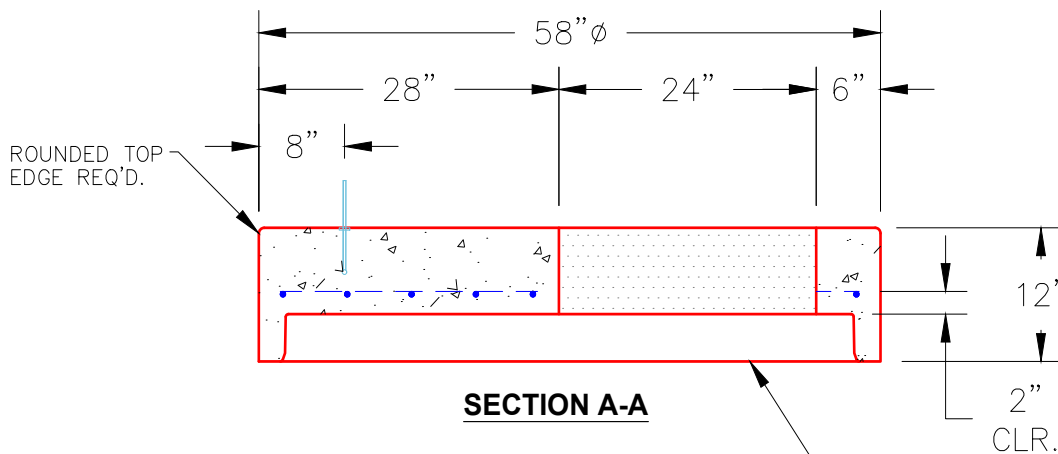
 Structure Total: 12161 lb

Structure Notes:
 1. PER ASTM C478 SPECIFICATIONS.
 2. CONCRETE = 4,000 PSI AT 28 DAYS.
 3. CASTING BY ICAST (HOE MC-375 F/C SANITARY),
 4. EXTERIOR DROP ASSEMBLY PROVIDED BY ICAST.

 REINFORCING PER ASTM A615 (GRADE 60).
 - TOP SLAB = H20 LOADING
 - RISER/WALLS (As .12)
 - FLOOR (As .31) #5 BARS AT 12" C.C.E.W.



PLAN VIEW



SECTION A-A

NOTES:

- 1. MANUFACTURED TO ASTM C-478 (LATEST REVISION).
- 2. CONCRETE: 4,000 PSI AT 28 DAYS.
- 3. REINFORCING: #5 BAR @ 12" O.C. E.W. (GRADE 60).

| | | | | |
|----------------------------------|----------------------------------|--------------------|-------------------|--|
| Coating (Int): Coating (Ext): | Seam Up: Flat Seam Dn: Groove | Wall Thickness: 5" | Height (Ext): 12" | Weight (Net): 1561 lb Volume (Net): 0.42cu.yd |
|----------------------------------|----------------------------------|--------------------|-------------------|--|