

Job Name: 26-1947 ADS Fisher Park Drive
 Job Location: Louisville, KY
 Contractor: ADS Advanced Drainage Systems, Inc.

Plant: Beaver Dam
 4/20/2026 9:01:12 AM

Tech: S. Felletter
 PC: C. Goff



Structure ID: QL2

P4 MH036LD10

MH FLAT TOP w/ 24" Ctr. Hole F/G

- P5) 24" - CASTING HEIGHT - 7"
- P4) 36" - MH FLAT TOP w/ 24" Ctr. Hole F/G - 10"
- P3) 36" - MH RISER Custom Ht T/G - 47"
- P2) 36" - MH RISER T/G - 72"
- P1) 36" - MH BASE T/h - 18"
- 1) JOINT WRAP - 0.065"x6"x50' CONSEAL CS212
- 1) JOINT WRAP PRIMER - CONSEAL CS-75 (1 gal.)
- 1) ASSEMBLY REQUIRED
- 1) CASTING - HOE MC-375 F/C Storm
- 3) 36" - Conseal CS-102 1.00" (Double)
- 2) Hole - 16

0 lb
 896 lb
 1982 lb
 2898 lb
 1525 lb
 0 lb
 0 lb
 0 lb
 271 lb
 0 lb
 0 lb

 Structure Total: 7572 lb

Structure Notes:

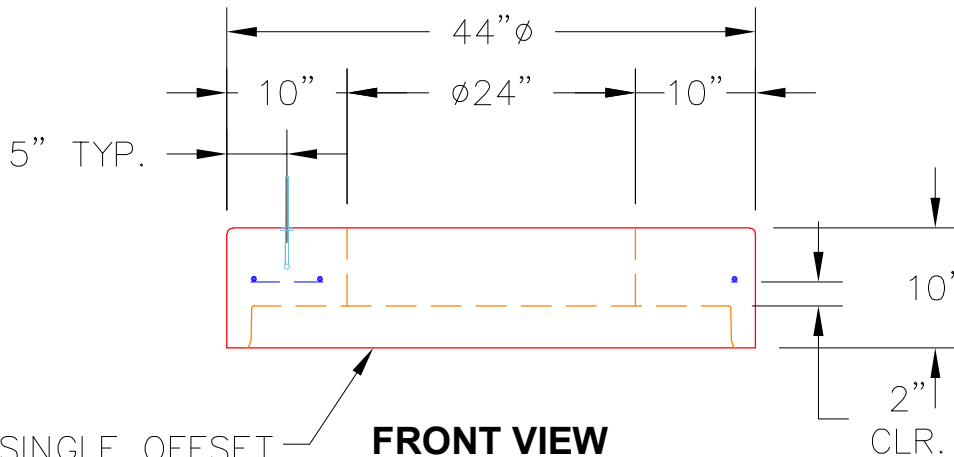
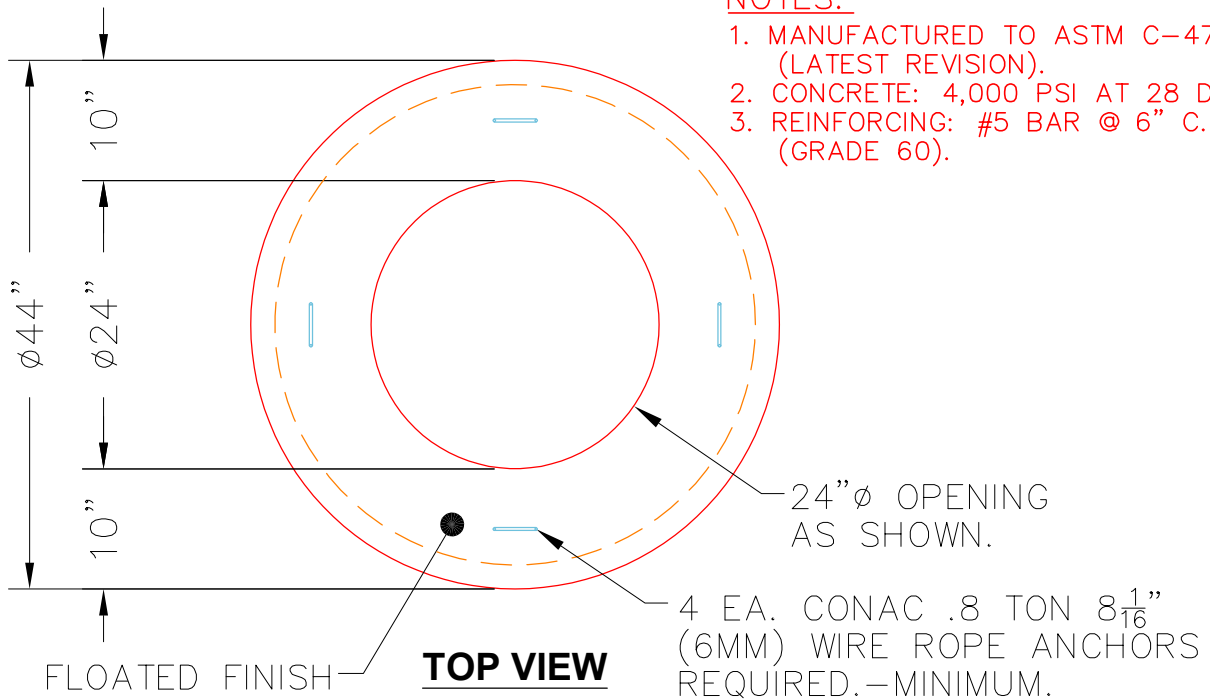
1. PER ASTM C478 SPECIFICATIONS.
2. CONCRETE = 4,000 PSI AT 28 DAYS.
3. CASTING BY ICAST (HOE MC-375 F/C "STORM").

REINFORCING PER ASTM A615 (GRADE 60).

- TOP SLAB (As .62) #5 BARS AT 6" C.C.E.W..
- RISER/WALLS (As .12)
- FLOOR (As .31) #5 BARS AT 12" C.C.E.W.

NOTES:

1. MANUFACTURED TO ASTM C-478 (LATEST REVISION).
2. CONCRETE: 4,000 PSI AT 28 DAYS.
3. REINFORCING: #5 BAR @ 6" C.C. E.W. (GRADE 60).



STANDARD SINGLE OFFSET GROOVE JOINT REQUIRED

Coating (Int):
 Coating (Ext):

Seam Up: Flat
 Seam Dn: Groove

Wall Thickness: 4"

Height (Ext): 10"

Weight (Net): 896 lb
 Volume (Net): 0.23cu.yd