

Job Name: 26-1941 ADS Williams Mill
 Job Location: Antiock, TN
 Contractor: ADS Advanced Drainage Systems, Inc.

Plant: Beaver Dam
 4/20/2026 9:49:55 AM

Tech: S. Felletter
 PC: C. Goff



Structure ID: A1A

P5 MH120LD18

MH FLAT LID w/24in CON Hole F/G

- P7) 24" - CASTING HEIGHT - 7"
- P6) 24" - GRADE RING F/F - 3"
- P5) 120" - MH FLAT LID w/24in CON Hole F/G - 18"
- P4) 120" - MH RISER NO STEPS T/G - 30"
- P3) 120" - MH RISER NO STEPS T/G - 96"
- P2) 120" - MH RISER NO STEPS T/G - 96"
- P1) 120" - MH BASE T/n - 24"
- 1) JOINT WRAP - 0.065"x6"x50' CONSEAL CS212
- 1) JOINT WRAP PRIMER - CONSEAL CS-75 (1 gal.)
- 1) ASSEMBLY REQUIRED - BRACKETS ONLY
- 1) CASTING - HOE MC-375 F/C Storm
- 4) 120" - Conseal CS-102 1.00" (Double)
- 2) Hole - 34

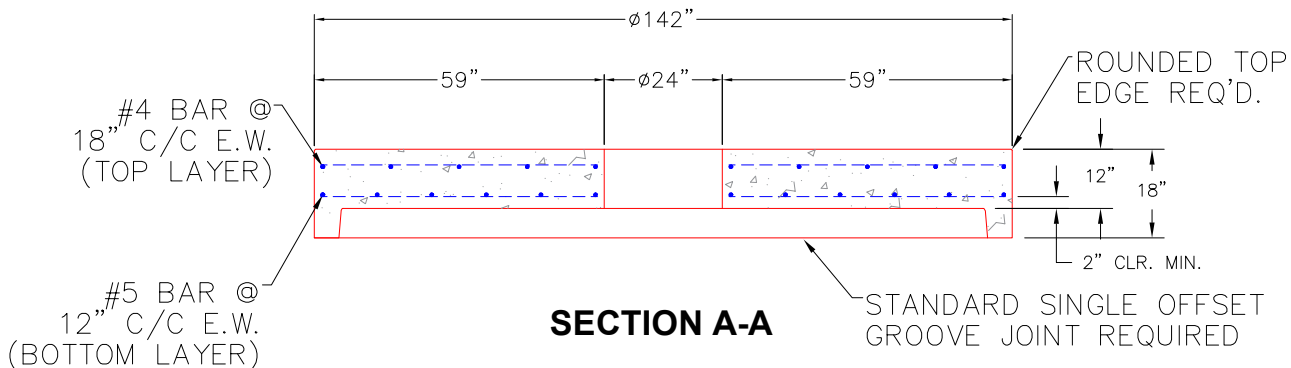
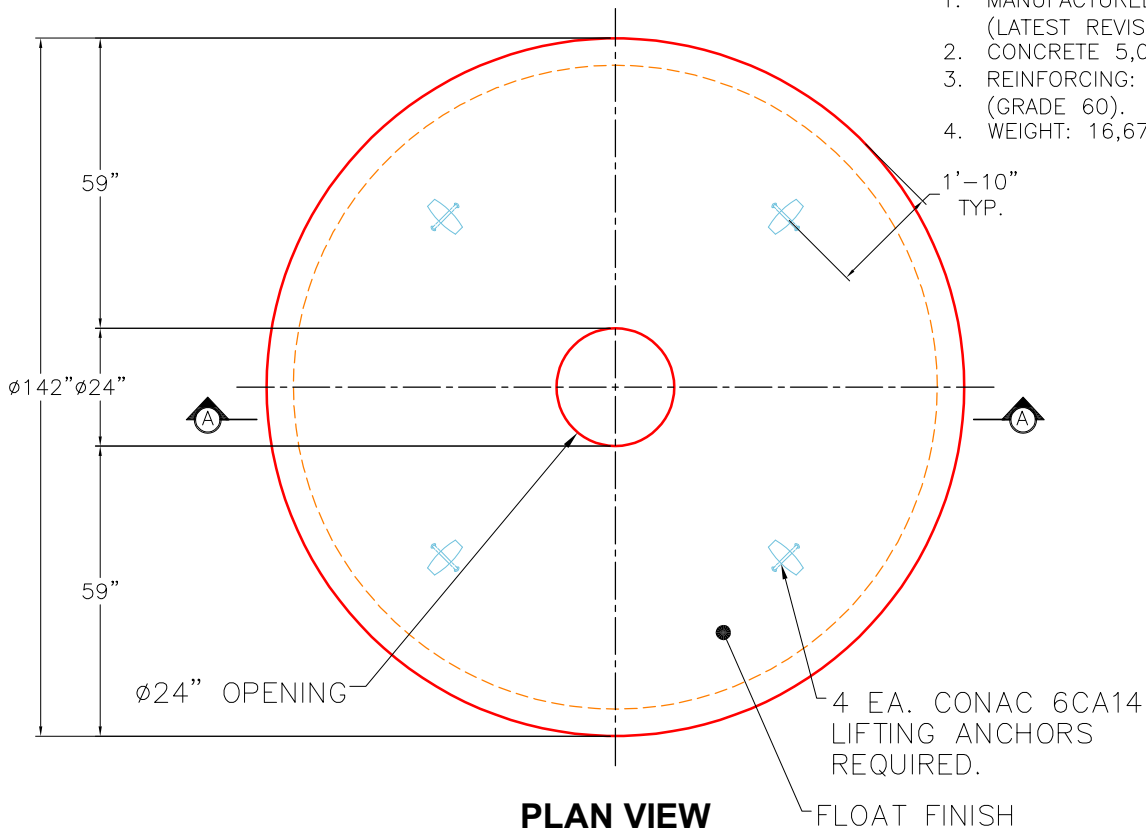
0 lb
 202 lb
 16678 lb
 11396 lb
 34643 lb
 36468 lb
 25064 lb
 0 lb
 0 lb
 0 lb
 271 lb
 0 lb
 0 lb

 Structure Total: 124722 lb

- Structure Notes:**
1. PER ASTM C478 SPECIFICATIONS.
 2. CONCRETE = 4,000 PSI AT 28 DAYS.
 3. CASTING BY ICAST (HOE MC-375 F/C "STORM").
- REINFORCING PER ASTM A615 (GRADE 60).**
- TOP SLAB (As .62) #5 BARS AT 6" C.C.E.W..
 - RISER/WALLS (As .36)
 - FLOOR (As .47) #5 BARS AT 8" C.C.E.W.

GENERAL NOTES:

1. MANUFACTURED TO ASTM C-478 (LATEST REVISION).
2. CONCRETE 5,000 PSI AT 28 DAYS.
3. REINFORCING: #4 & #5 BAR AS SHOWN (GRADE 60).
4. WEIGHT: 16,678 LBS.



Coating (Int): Coating (Ext):	Seam Up: Flat Seam Dn: Groove	Wall Thickness: 11"	Height (Ext): 18"	Weight (Net): 16678 lb Volume (Net): 4.26cu.yd
----------------------------------	----------------------------------	---------------------	-------------------	---