

Job Name: 26-1929 743637 Indigo Apartments
 Job Location: Frankfort, KY
 Contractor: Contech Engineering Solutions

Plant: Beaver Dam
 4/10/2026 10:45:02 AM

Tech: S. Felletter
 PC: C. Goff



Structure ID: 10-CS-6

P3 MH072LD15-30ECC

MH FLAT TOP SPEC. (30" ECC HOLE) F/G

- P4) 30" - CASTING HEIGHT - 4"
- P3) 72" - MH FLAT TOP SPEC. (30" ECC HOLE) F/G - 15"
- P2) 72" - MH RISER T/G - 84"
- P1) 72" - MH BASE T/h - 84"
- 1) CVSTENCILING
- 1) ASSEMBLY REQUIRED
- 2) 72" - Conseal CS-102 1.00"
- 2) Hole - 32

0 lb
 4661 lb
 11853 lb
 15564 lb
 0 lb
 0 lb
 0 lb
 0 lb

 Structure Total: 32078 lb

Structure Notes:
 4" CASTING BY OTHERS

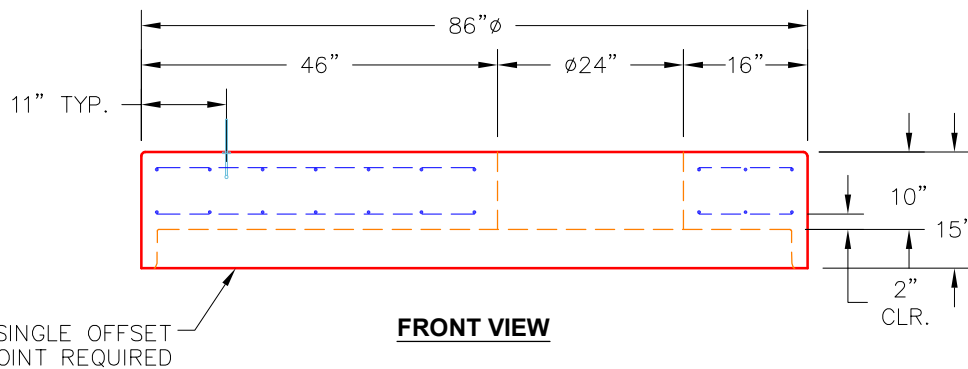
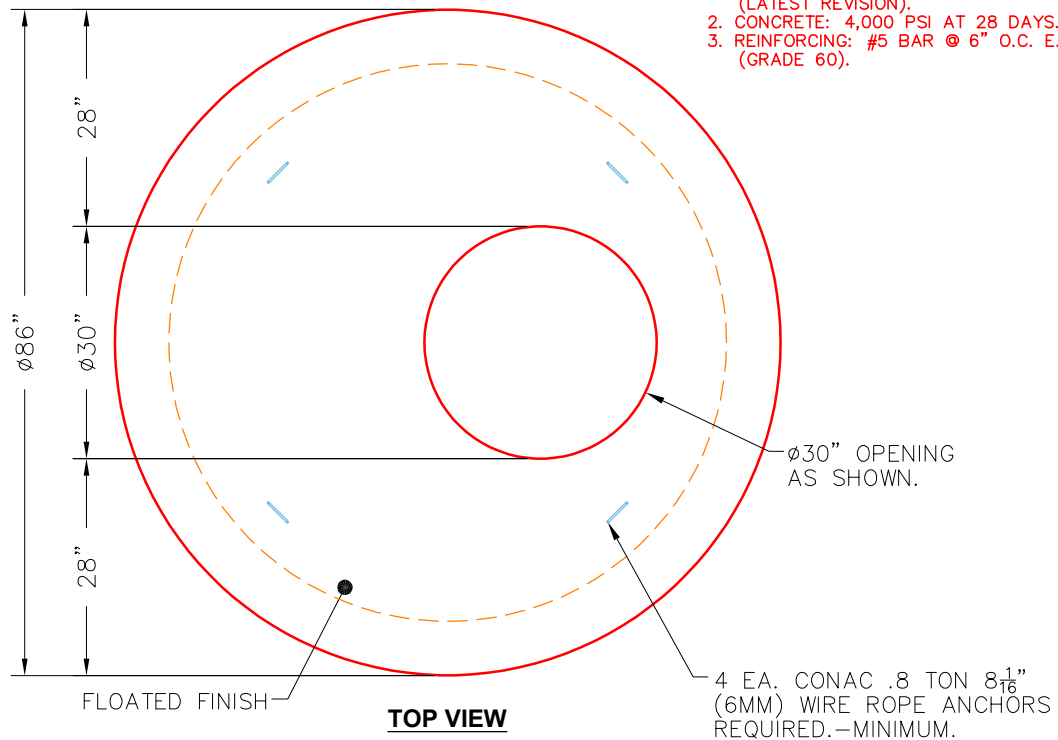
 LIFTING ANCHORS TO BE INSTALLED
 ON THE OUTSIDE OF THE STRUCTURE

 ICAST TO INSTALL THE INTERNALS

 CONTECH'S LOGO AS WELL AS THE
 INLET AND OUTLET MUST BE
 STENCILED ONTO THE STRUCTURE

NOTES:

1. MANUFACTURED TO ASTM C-478 (LATEST REVISION).
2. CONCRETE: 4,000 PSI AT 28 DAYS.
3. REINFORCING: #5 BAR @ 6" O.C. E.W. (GRADE 60).



Coating (Int):
 Coating (Ext):

Seam Up: Flat
 Seam Dn: Groove

Wall Thickness: 7"

Height (Ext): 15"

Weight (Net): 4661 lb
 Volume (Net): 1.19cu.yd