

Job Name: 26-1885 869435 Garrison Gardens
 Job Location: Bowling Green, KY
 Contractor: Contech Engineering Solutions

Plant: Beaver Dam
 4/20/2026 9:10:37 AM

Tech: S. Felletter
 PC: C. Goff



Structure ID: 20-CS-6

P4 MH072LD15-30ECC

MH FLAT TOP SPEC. (30" ECC HOLE) F/G

- P5) 30" - CASTING HEIGHT - 4"
- P4) 72" - MH FLAT TOP SPEC. (30" ECC HOLE) F/G - 15"
- P3) 72" - MH RISER T/G - 72"
- P2) 72" - MH RISER T/G - 84"
- P1) 72" - MH BASE T/h - 24"
- 1) ASSEMBLY REQUIRED
- 1) CVSTENCILING
- 3) 72" - Conseal CS-102 1.00"
- 2) Hole - 44

0 lb
 4661 lb
 10485 lb
 10359 lb
 7398 lb
 0 lb
 0 lb
 0 lb
 0 lb

 Structure Total: 32902 lb

Structure Notes:
 4" CASTING BY OTHERS

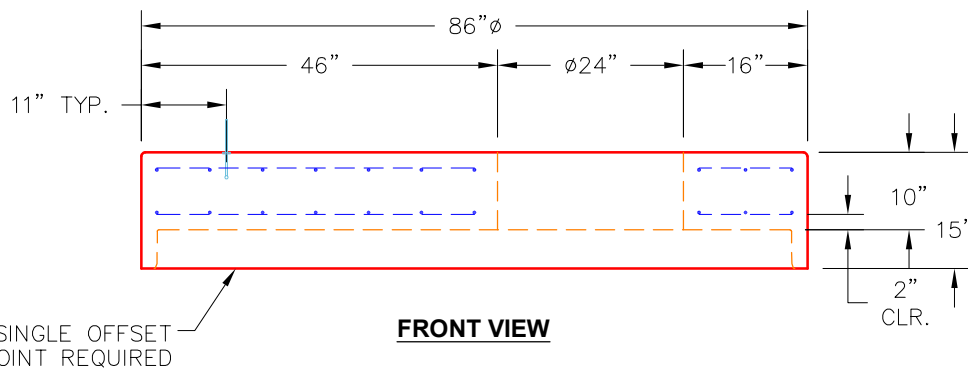
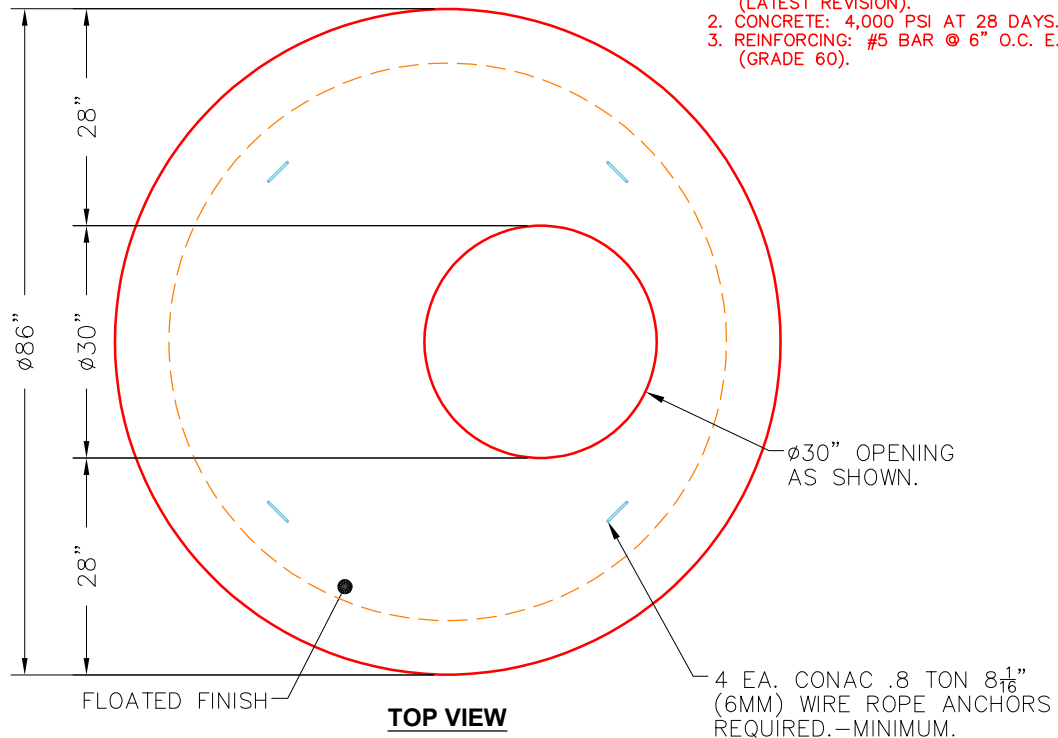
 LIFTING ANCHORS TO BE INSTALLED
 ON THE OUTSIDE OF THE STRUCTURE

 ICAST TO INSTALL THE INTERNALS

 CONTECH'S LOGO AS WELL AS THE
 INLET AND OUTLET MUST BE
 STENCILED ONTO THE STRUCTURE

NOTES:

1. MANUFACTURED TO ASTM C-478 (LATEST REVISION).
2. CONCRETE: 4,000 PSI AT 28 DAYS.
3. REINFORCING: #5 BAR @ 6" O.C. E.W. (GRADE 60).



Coating (Int):
 Coating (Ext):

Seam Up: Flat
 Seam Dn: Groove

Wall Thickness: 7"

Height (Ext): 15"

Weight (Net): 4661 lb
 Volume (Net): 1.19cu.yd