

Job Name: 26-1882 - Fork River Commons
Job Location: Millington, TN
Contractor: Woods Constructions Services, Inc.

PC: T. Lewis
 TECH: Jared - A
 Plant: 100



Structure ID: **MH-2 ST-MH**

Spec: Storm
 Type: STM.MH
 Size: 48"

Rim: 284.17'
 Invert: 273.08'
 Rim to Invert: 11.09'

Sump: 1.9"
 Floor (Top): 272.922'
 Floor Height: 8"

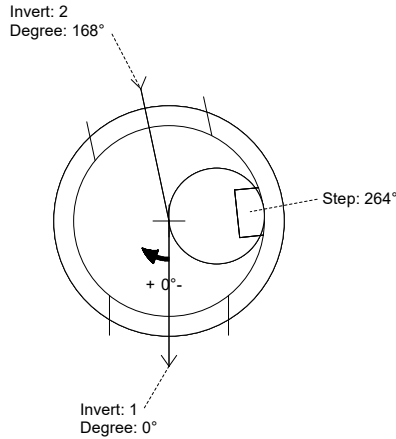
Floor (Bot): 272.255'
 Overall Height: 11.75'
 Slack: 1.98"

Structure Notes:

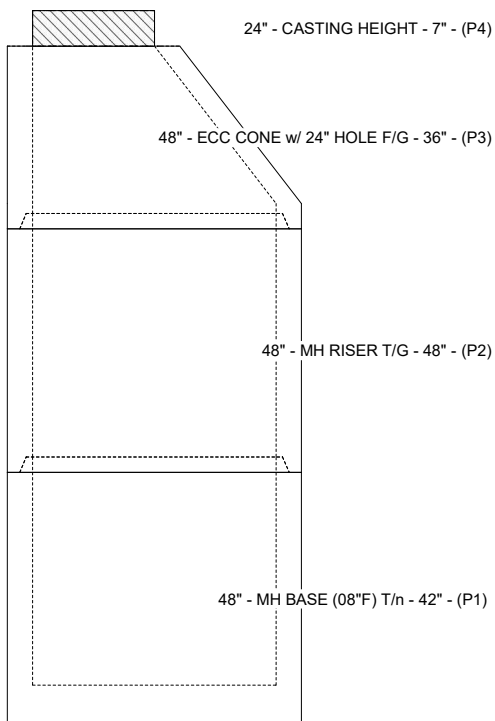
1. PER ASTM C-478 SPECIFICATIONS
2. CONCRETE: 4,000 PSI AT 28 DAYS
3. REINFORCEMENT: PER ASTM A615
4. NO STORM INVERT
5. STEPS AT 264 DEGREES
6. JBS 1020 FRAME & COVER "DRAIN" SUPPLIED BY ICAST

STRUCTURE SUMMARY:

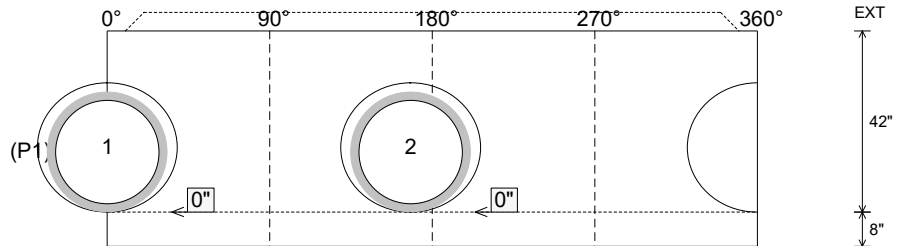
P4) 24" - CASTING HEIGHT - 7"	0 lb
P3) 48" - ECC CONE w/ 24" HOLE F/G - 36"	3000 lb
P2) 48" - MH RISER T/G - 48"	3353 lb
P1) 48" - MH BASE (08"F) T/n - 42"	4076 lb
1) CASTING - JBS 1020 F/C DRAIN	250 lb
2) 48" - Conseal CS-102 1.00"	0 lb
2) Hole - 30	0 lb
10) MH Step ML-10-TDS-NCR - 10"	0 lb
Structure Total:	10679 lb



Position	Elev	Angle	Pipe	Pipe OD	Hole	Connector	Up ()	Ref
Rim	284.17'							
Reducer								
Invert 1	273.08'	0°	24" HDPE	27.8"	30"	Hole 30	0"	P1
Invert 2	273.08'	168°	24" HDPE	27.8"	30"	Hole 30	0"	P1
Invert 3								
Invert 4								
Invert 5								
Invert 6								
Invert 7								
Invert 8								



Cast (Int. Dim.) - Interior Dimensions



Submittal Drawing
 4/30/2026 12:24:19 PM

SUBMITTAL
 APPROVED BY: