

Job Name: 26-1880 733377 Larkin Springs Townhomes
 Job Location: Madison, TN
 Contractor: Contech Engineering Solutions

Plant: Beaver Dam
 4/10/2026 8:58:27 AM

Tech: S. Felletter
 PC: C. Goff



Structure ID: 20-CS-5

P3 MH060LD13-30ECC

MH FLAT TOP SPEC. (30" ECC HOLE) F/G

- P4) 30" - CASTING HEIGHT - 4"
- P3) 60" - MH FLAT TOP SPEC. (30" ECC HOLE) F/G - 13"
- P2) 60" - MH RISER T/G - 54"
- P1) 60" - MH BASE T/h - 36"
- 1) ASSEMBLY REQUIRED
- 1) CVSTENCILING
- 2) 60" - Conseal CS-102 1.00"
- 2) Hole - 28

0 lb
 2589 lb
 4996 lb
 6491 lb
 0 lb
 0 lb
 0 lb
 0 lb

 14077 lb

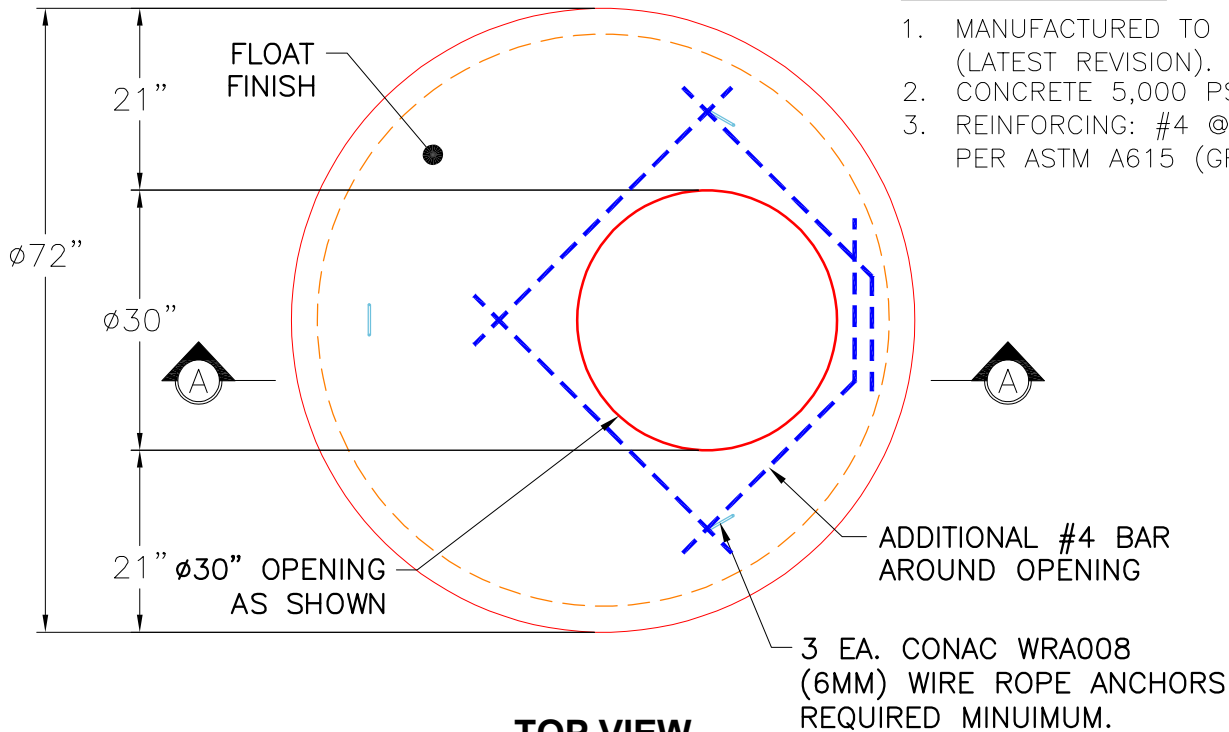
Structure Total:

Structure Notes:

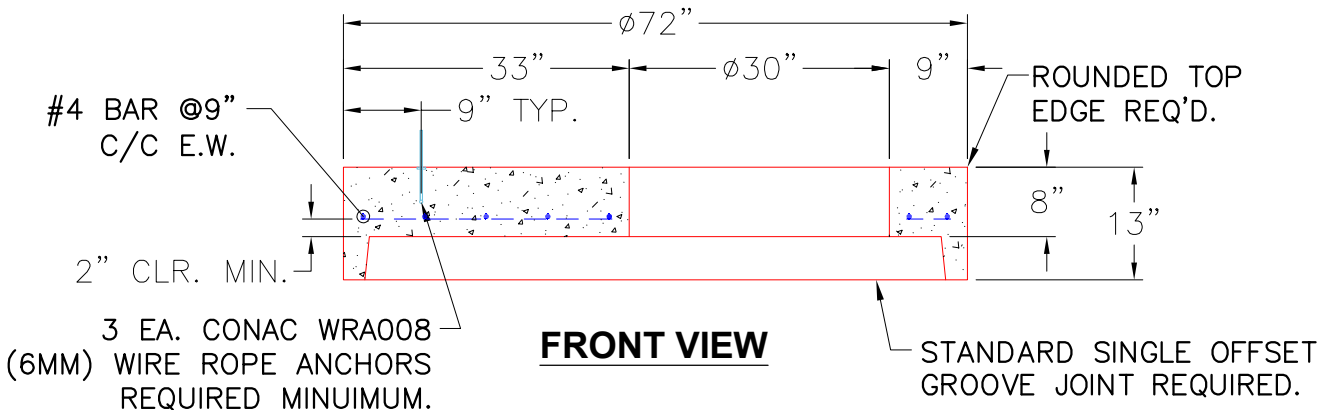
- 4" CASTING BY OTHERS
- LIFTING ANCHORS TO BE INSTALLED ON THE OUTSIDE OF THE STRUCTURE
- BASE AND RISER TO BE MECHANICALLY ATTACHED PRIOR TO ASSEMBLY
- ICAST TO INSTALL THE INTERNALS
- CONTECH'S LOGO AS WELL AS THE INLET AND OUTLET MUST BE STENCILED ONTO THE STRUCTURE

GENERAL NOTES:

1. MANUFACTURED TO ASTM C-478 (LATEST REVISION).
2. CONCRETE 5,000 PSI AT 28 DAYS.
3. REINFORCING: #4 @ 9" O.C. E.W. PER ASTM A615 (GRADE 60)



TOP VIEW



FRONT VIEW

Coating (Int):
 Coating (Ext):

Seam Up: Flat
 Seam Dn: Groove

Wall Thickness: 6"

Height (Ext): 13"

Weight (Net): 2589 lb
 Volume (Net): 0.66cu.yd