

Job Name: 26-1880 733377 Larkin Springs Townhomes
 Job Location: Madison, TN
 Contractor: Contech Engineering Solutions

Plant: Beaver Dam
 4/10/2026 8:58:27 AM

Tech: S. Felletter
 PC: C. Goff



Structure ID: 15-CS-6

P4 MH072LD15-30ECC

MH FLAT TOP SPEC. (30" ECC HOLE) F/G

- P5) 30" - CASTING HEIGHT - 4"
- P4) 72" - MH FLAT TOP SPEC. (30" ECC HOLE) F/G - 15"
- P3) 72" - MH RISER T/G - 24"
- P2) 72" - MH RISER T/G - 54"
- P1) 72" - MH BASE T/h - 36"
- 1) ASSEMBLY REQUIRED
- 1) CVSTENCILING
- 3) 72" - Conseal CS-102 1.00"
- 2) Hole - 24

0 lb
 4661 lb
 3499 lb
 7332 lb
 9148 lb
 0 lb
 0 lb
 0 lb
 0 lb

 Structure Total: 24639 lb

Structure Notes:
 4" CASTING BY OTHERS

 LIFTING ANCHORS TO BE INSTALLED
 ON THE OUTSIDE OF THE STRUCTURE

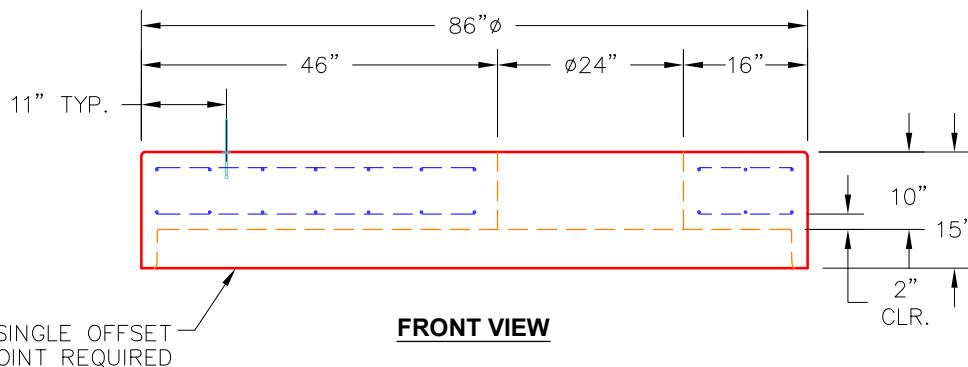
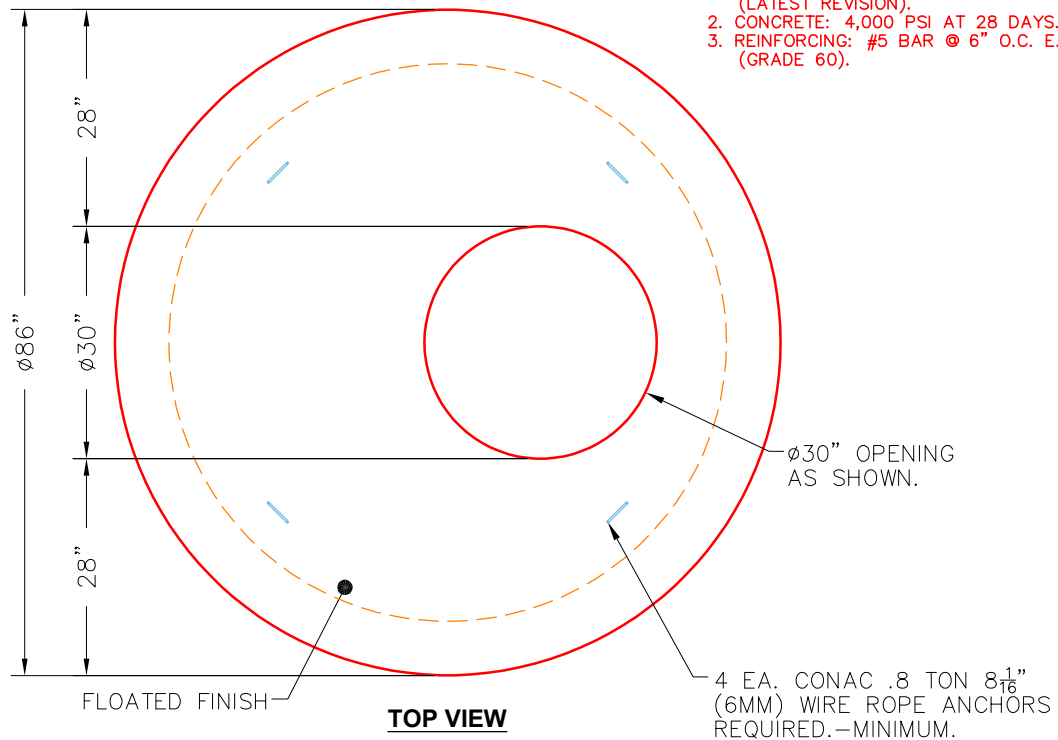
 P1 RISER TO BE MECHANICALLY ATTACHED
 TO BASE PRIOR TO ASSEMBLY

 ICAST TO INSTALL THE INTERNALS

 CONTECH'S LOGO AS WELL AS THE
 INLET AND OUTLET MUST BE
 STENCILED ONTO THE STRUCTURE

NOTES:

1. MANUFACTURED TO ASTM C-478 (LATEST REVISION).
2. CONCRETE: 4,000 PSI AT 28 DAYS.
3. REINFORCING: #5 BAR @ 6" O.C. E.W. (GRADE 60).



Coating (Int):
 Coating (Ext):

Seam Up: Flat
 Seam Dn: Groove

Wall Thickness: 7"

Height (Ext): 15"

Weight (Net): 4661 lb
 Volume (Net): 1.19cu.yd