

Job Name: 26-1813 - Hunting Creek Clubhouse
 Job Location: Prospect, KY 40059
 Contractor: H&W Landwork

Plant: Beaver Dam, KY
 4/7/2026 8:32:41 AM

Tech: K. Cardwell
 PC: T. Lewis



Structure ID: QL2 ST-CI

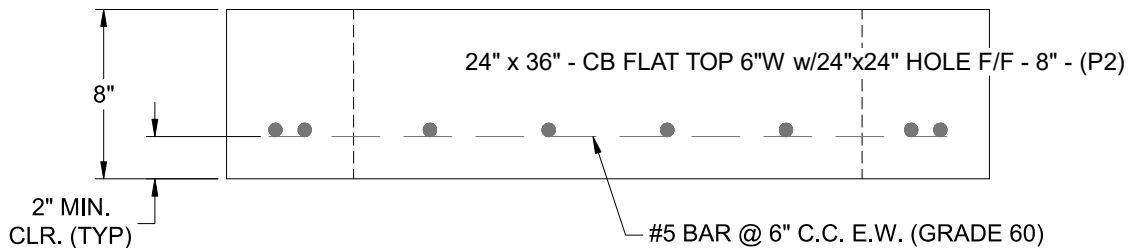
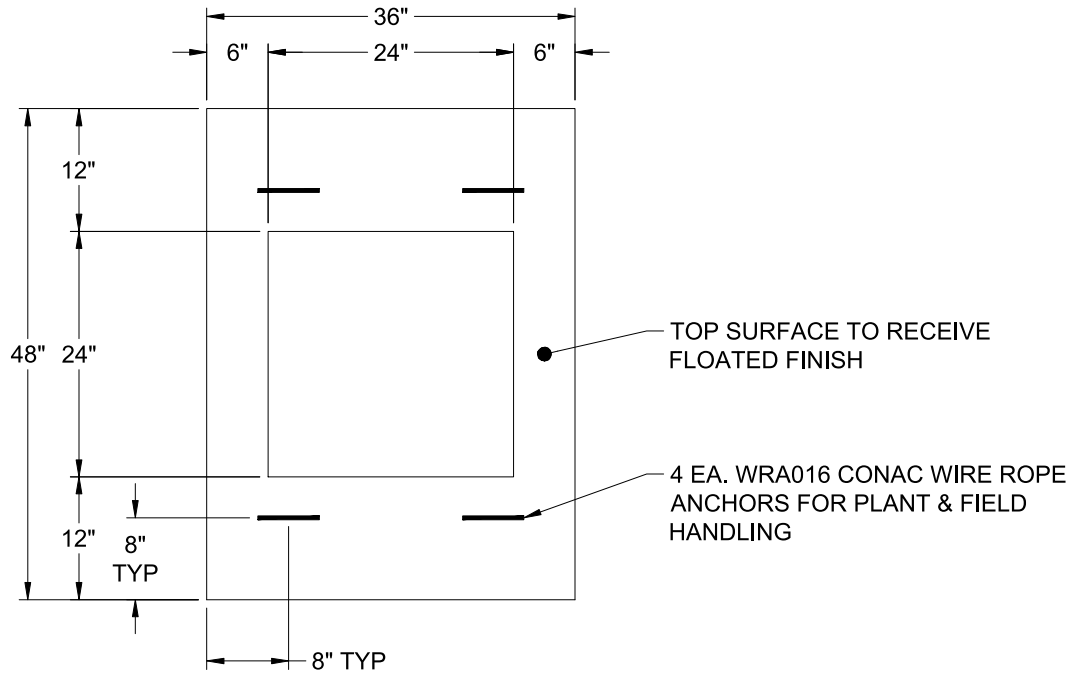
P2 BX024036-06LD08S

CB FLAT TOP 6"W w/24"x24" HOLE F/F

- P4) 24" x 24" - CASTING HEIGHT - 6"
- P3) 24" x 24" - GRADE RING 6"W F/F - 6"
- P2) 24" x 36" - CB FLAT TOP 6"W w/24"x24" HOLE F/F - 8"
- P1) 24" x 36" - KNOCKOUT BASE 6"W/F - STOCK F/n - 42"
- 1) CASTING - HOE 360 Set (F/G/H)
- 1) 24" x 36" - Conseal CS-102 1.00"
- 2) 24" x 24" - Conseal CS-102 1.00"
- 1) No Opening

0 lb
 362 lb
 773 lb
 2466 lb
 362 lb
 0 lb
 0 lb
 0 lb
 Structure Total: 3964 lb

- Structure Notes:
1. PER ASTM C-913 SPECIFICATIONS
 2. CONCRETE: 4,000 PSI AT 28 DAYS
 3. REINFORCEMENT: #5 BAR @ 6" C.C. E.W. (GRADE 60) - 2" MIN. REBAR CLEARANCE (TYP)
 4. HOE-360 FRAME, L-VANE GRATE, & CURB HOOD SUPPLIED BY ICAST
 5. LIFTERS: 4 EA. WRA016 CONAC WIRE ROPE ANCHORS FOR PLANT & FIELD HANDLING
 6. TOP SURFACE TO RECEIVE FLOATED FINISH



Coating (Int):
 Coating (Ext):

Seam Up: Flat
 Seam Dn: Flat

Wall Thickness: 6"

Height (Ext): 8"

Weight (Net): 773 lb
 Volume (Net): 0.2cu.yd