

Job Name: 26-1813 - Hunting Creek Clubhouse
 Job Location: Prospect, KY 40059
 Contractor: H&W Landwork

Plant: Beaver Dam, KY
 4/7/2026 8:32:30 AM

Tech: K. Cardwell
 PC: T. Lewis



Structure ID: QL2 ST-CI

P1 BX2436-06B42-KO

KNOCKOUT BASE 6"W/F - STOCK F/n

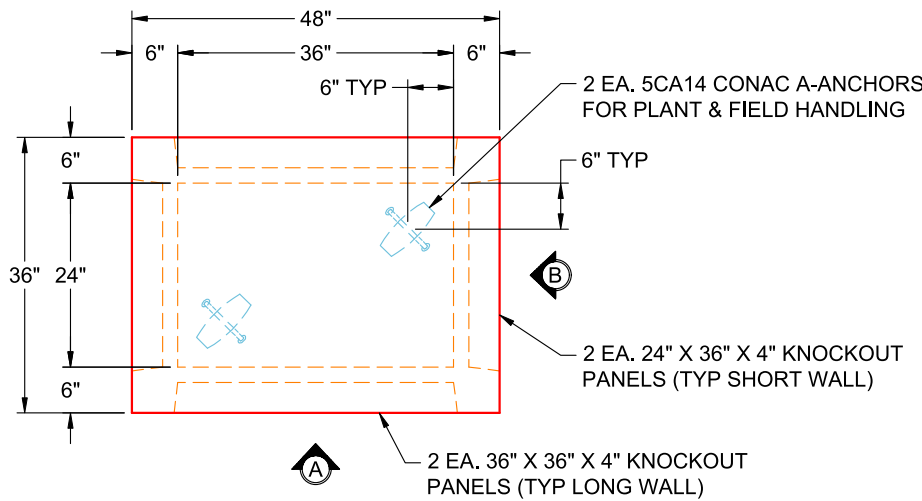
- P4) 24" x 24" - CASTING HEIGHT - 6"
- P3) 24" x 24" - GRADE RING 6"W F/F - 6"
- P2) 24" x 36" - CB FLAT TOP 6"W w/24"x24" HOLE F/F - 8"
- P1) 24" x 36" - KNOCKOUT BASE 6"W/F - STOCK F/n - 42"
- 1) CASTING - HOE 360 Set (F/G/H)
- 1) 24" x 36" - Conseal CS-102 1.00"
- 2) 24" x 24" - Conseal CS-102 1.00"
- 1) No Opening

0 lb
 362 lb
 773 lb
 2466 lb
 362 lb
 0 lb
 0 lb
 0 lb

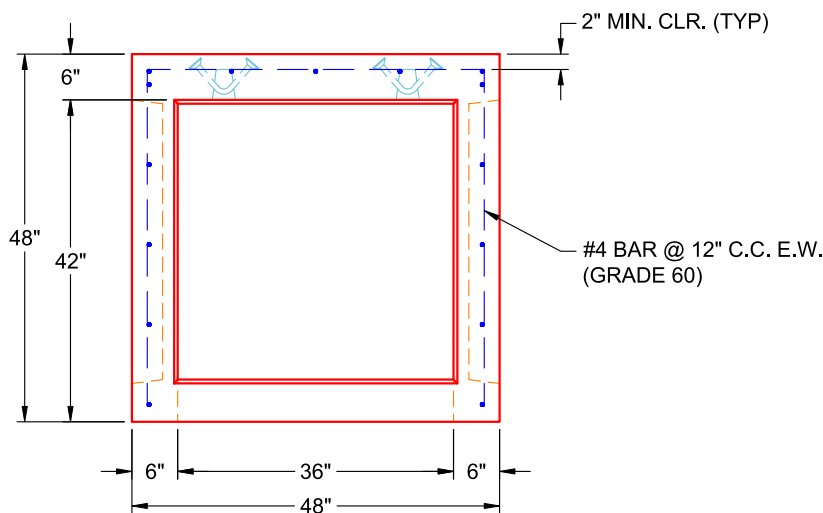
 Structure Total: 3964 lb

- Structure Notes:
1. PER ASTM C-913 SPECIFICATIONS
 2. CONCRETE: 4,000 PSI AT 28 DAYS
 3. REINFORCEMENT: #4 BAR @ 12" C.C. E.W. (GRADE 60) - 2" MIN. REBAR CLEARANCE
 4. NO STORM INVERT
 5. NO STEPS
 6. HOE-360 FRAME, L-VANE GRATE, & CURB HOOD SUPPLIED BY ICAST
 7. LIFTERS: 2 EA. 5CA14 CONAC A-ANCHORS FOR PLANT & FIELD HANDLING - INSTALLED IN FLOOR AS SHOWN

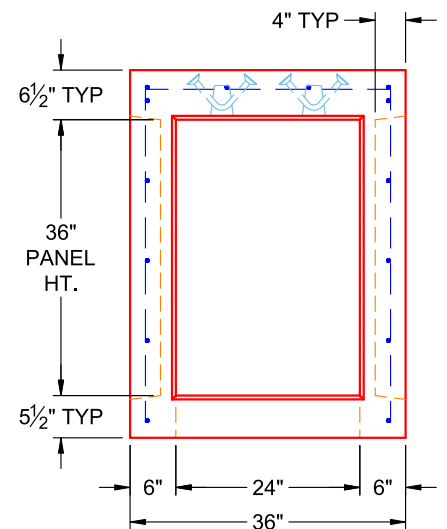
Rim: 5.34' Rim to Invert: 5.34' Slack: 2.08" Sump: 0" Step Position:



**PLAN VIEW
(UPSIDE DOWN)**



**VIEW A
(UPSIDE DOWN)**



**VIEW B
(UPSIDE DOWN)**

Coating (Int): Coating (Ext):	Seam Up: Flat Seam Dn: n/a	Wall Thickness: 6" Floor Height: 6"	Height (Int): 42" Height (Ext): 48"	Weight (Net): 2466 lb Volume (Net): 0.63cu.yd
----------------------------------	-------------------------------	--	--	--