

Job Name: 26-1813 - Hunting Creek Clubhouse
Job Location: Prospect, KY 40059
Contractor: H&W Landwork

PC: T. Lewis
 TECH: K. Cardwell
 Plant: Beaver Dam, KY



Structure ID: **QL1 ST-CI (2)**
 Spec: KO BOXES
 Type: BX 6inW, 6inF
 Size: 24" x 36"

Rim: 4.51'
 Invert: 0'
 Rim to Invert: 4.51'

Sump: 0"
 Floor (Top): 0'
 Floor Height: 6"

Floor (Bot): -0.5'
 Overall Height: 5.167'
 Slack: 0"

Structure Notes:

1. PER ASTM C-913 SPECIFICATIONS
2. CONCRETE: 4,000 PSI AT 28 DAYS
3. REINFORCEMENT:
 - FLAT LID: #5 BAR @ 6" C.C. E.W. (GRADE 60)
 - KNOCKOUT BASE: #4 BAR @ 12" C.C. E.W. (GRADE 60)
4. NO STORM INVERT
5. NO STEPS
6. HOE-360 FRAME, L-VANE GRATE, & CURB HOOD SUPPLIED BY ICAST

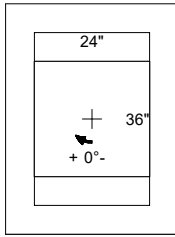
STRUCTURE SUMMARY:

- P3) 24" x 24" - CASTING HEIGHT - 6"
- P2) 24" x 36" - CB FLAT TOP 6"W w/24"x24" HOLE F/F - 8"
- P1) 24" x 36" - KNOCKOUT BASE 6"W/F - STOCK F/n - 42"
- 1) CASTING - HOE 360 Set (F/G/H)
- 1) 24" x 36" - Conseal CS-102 1.00"
- 1) 24" x 24" - Conseal CS-102 1.00"
- 1) No Opening

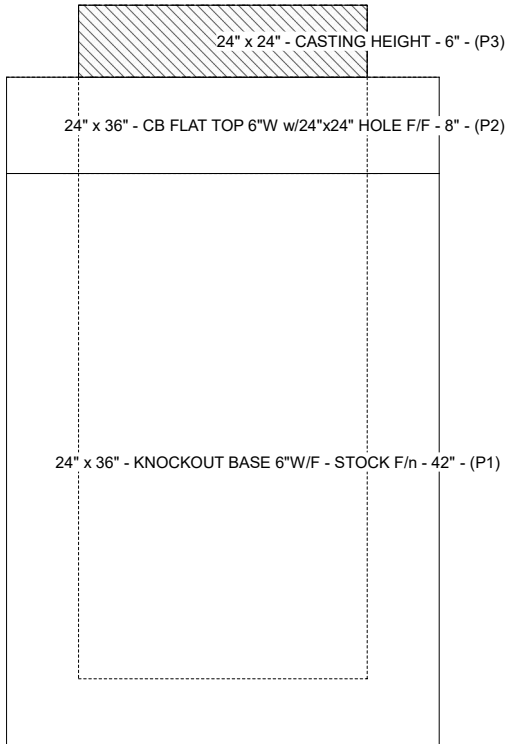
0 lb
 773 lb
 2466 lb
 362 lb
 0 lb
 0 lb
 0 lb

 0 lb

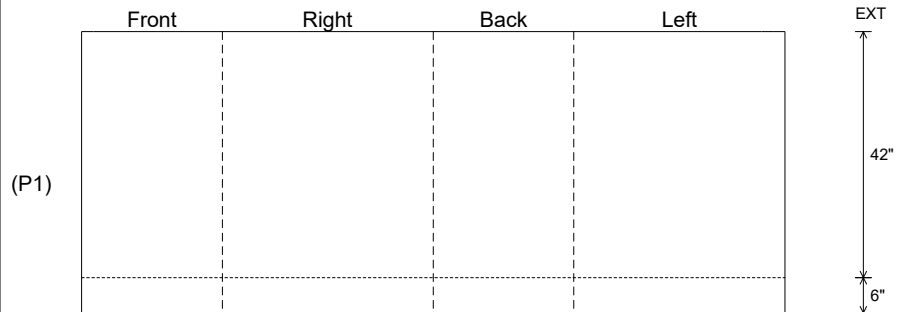
Structure Total: 3602 lb



Position	Elev	Angle	Pipe	Pipe OD	Hole	Connector	Up (L)	Ref
Rim	4.51'							
Reducer								
Invert 1			No Opening			No Opening		P1
Invert 2								
Invert 3								
Invert 4								
Invert 5								
Invert 6								
Invert 7								
Invert 8								



Cast (Int. Dim.) - Interior Dimensions



Submittal Drawing
 4/7/2026 8:32:12 AM

SUBMITTAL
 APPROVED BY: