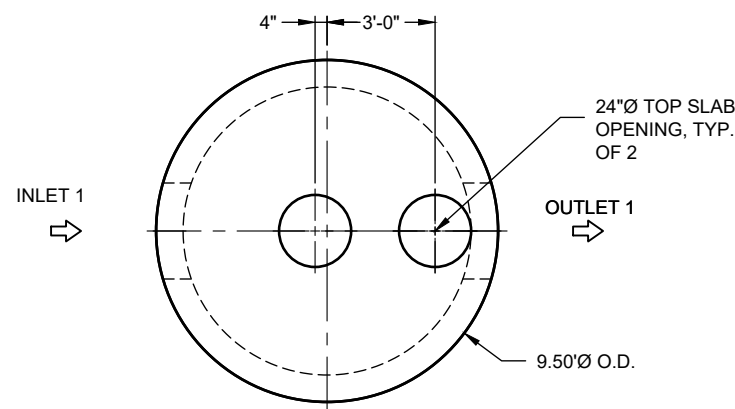
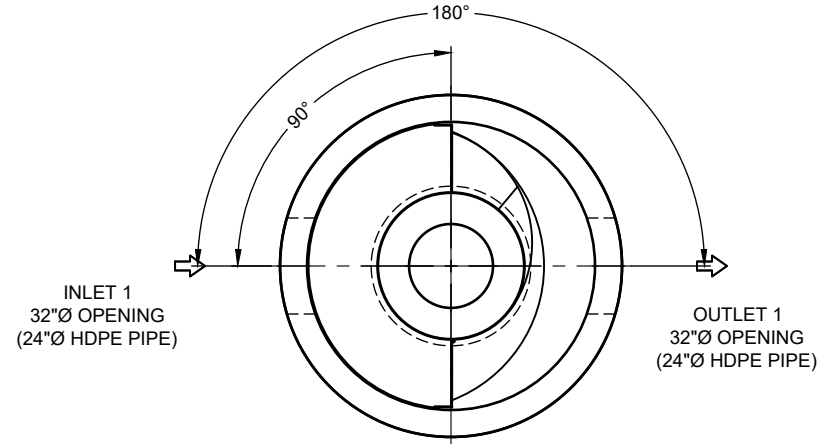


# 26-1792 - 888613 Danco Regional Facility



**PLAN VIEW**  
INTERNALS NOT SHOWN

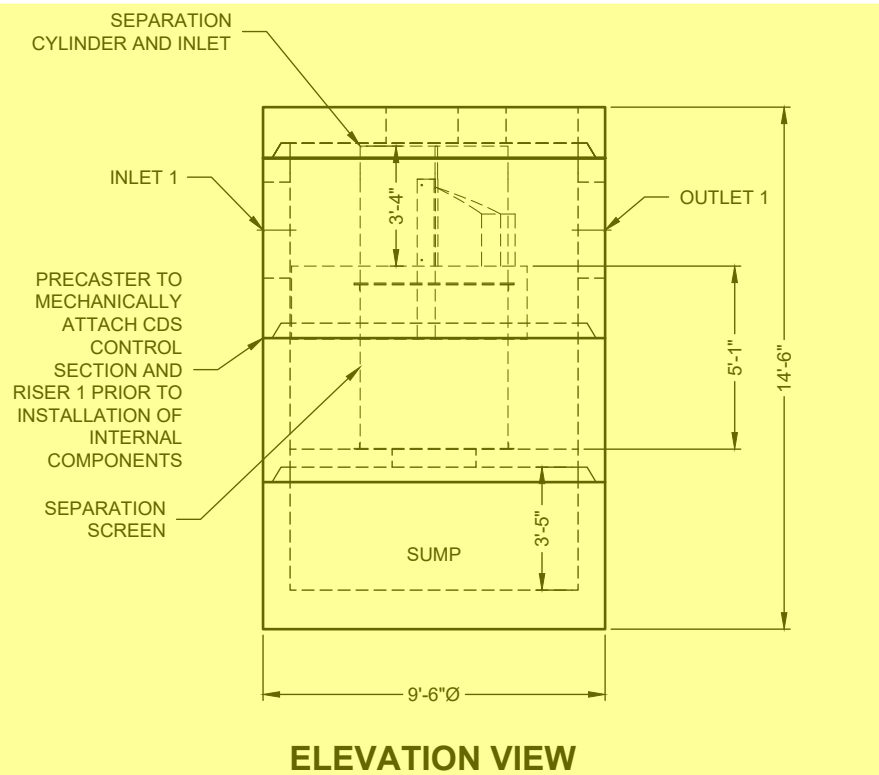


**PLAN VIEW FOR PIPE ORIENTATION**  
TOP SLAB NOT SHOWN

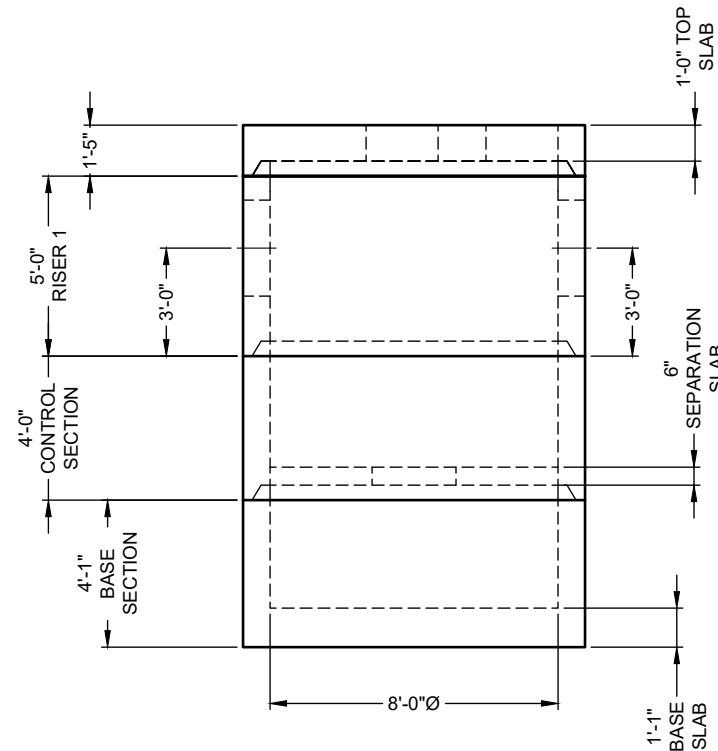
INSTALLER TO TRIM CYLINDER TO DIMENSIONED HEIGHT

**10-CDS4045-8-C**  
**ICAST to fully pre-assemble internal materials prior to shipment**

SEE INSTALLATION NOTE A



**ELEVATION VIEW**



**PRECAST COMPONENTS**  
INTERNALS NOT SHOWN

## MATERIAL LIST

COUNT	DESCRIPTION	PART NUMBER	PROVIDED BY	INSTALLED BY
1	4045-8 CONCENTRIC FIBERGLASS INSERT	325-000796	CONTECH	PRECASTER
1	4045, 2400 micron, 4.1' O.D. x 4.58' SCREEN, GREEN FLANGE UP	335-000390	CONTECH	PRECASTER
1	20, 30, 40 SERIES HARDWARE KIT	325-003921	CONTECH	PRECASTER
1	SEALANT FOR JOINTS		PRECASTER	CONTRACTOR
2	24"Ø X 4" FRAME AND COVER, EJ #41600389, OR EQUIV.	325-000350	CONTECH	CONTRACTOR

## GENERAL NOTES

- DESIGN LOADING - AASHTO HS-20
- ALL PRECAST CONCRETE MANUFACTURED PARTS SHALL CONFORM TO ASTM C-478, WITH MINIMUM CONCRETE STRENGTH OF 4000 PSI AT 28 DAYS
- JOINT SEALANT SHALL CONFORM TO ASTM C-990 OR ASTM C-443
- GROUND WATER ASSUMED AT OUTLET INVERT
- MANUFACTURING TOLERANCE = +/- 1/2-INCH
- SOME HIDDEN LINES MAY BE OMITTED FOR CLARITY

## INSTALLATION NOTES

- PRECASTER TO SHIP FRAME AND COVER WITH STRUCTURE
- REFER TO CONTECH ASSEMBLY INSTRUCTIONS FOR ADDITIONAL INFORMATION
- FOR PROPER SCREEN ORIENTATION, FLANGE IS COLOR CODED, INSTALL GREEN FLANGE UP
- IF REQUIRED, PVC HYDRAULIC SHEAR PLATE IS PLACED ON SEPARATION SLAB AT BOTTOM OF SCREEN CYLINDER
- PRECASTER TO INSTALL INTERNAL COMPONENTS PRIOR TO SHIPPING UNLESS INSTRUCTED OTHERWISE BY CONTECH
- PIPE OPENINGS SHALL BE STENCILED "INLET" OR "OUTLET" AS APPROPRIATE
- APPLYING ALIGNMENT MARKS ON ALL PIECES OF MULTIPLE ASSEMBLIES IS HIGHLY ENCOURAGED
- IF STRUCTURE IS DELIVERED IN MULTIPLE SECTIONS, EACH PIECE SHALL BE LABELED WITH THE CONTECH PROJECT NUMBER, SEQUENCE NUMBER AND SITE DESIGNATION

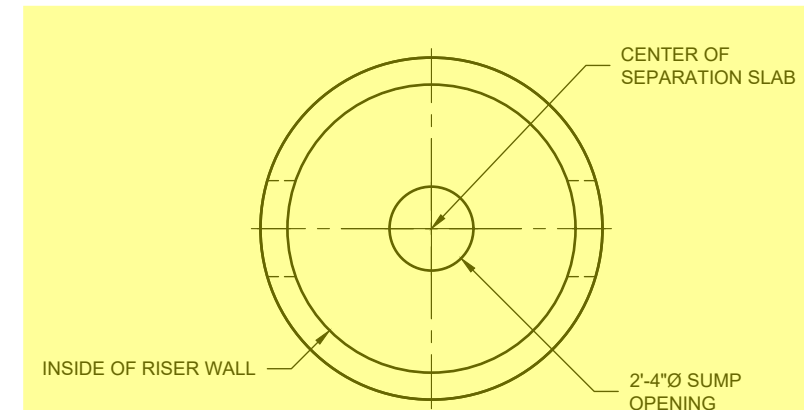
## SITE INFORMATION

RIM ELEV. = 395.5+/-  
TOP OF STRUCTURE ELEV. = 394.98  
INLET PIPE 1 INVERT ELEV. = 390.56  
INLET PIPE 1 DIAMETER AND MATERIAL = 24" HDPE  
OUTLET PIPE 1 INVERT ELEV. = 390.56  
OUTLET PIPE 1 DIAMETER AND MATERIAL = 24" HDPE  
OUTSIDE BOTTOM OF STRUCTURE ELEV. = 380.48

## STRUCTURE WEIGHT

APPROXIMATE HEAVIEST PICK = 33000 LBS.  
STRUCTURE IS DELIVERED IN 3 PIECES

TOP SLAB = 11000 LBS.  
RISER 1 = MECHANICALLY ATTACHED TO CONTROL SECTION  
CONTROL SECTION = 33000 LBS.  
BASE SECTION = 22500 LBS.



**SEPARATION SLAB**

CONTECH  
**FABRICATION**  
DRAWING

ICAST  
5888 / 757440  
LAYOUT 1A  
31.22 TS

The design and information shown on this drawing is the property of CONTECH Engineered Solutions LLC. It is to be used only for the project and site conditions specified herein. No part of this drawing, nor any part thereof, may be used, copied, reproduced, or transmitted in any form or by any means, electronic or mechanical, including photocopying, recording, or by any information storage and retrieval system, without the prior written consent of CONTECH. Failure to comply with these terms and conditions shall constitute a breach of contract and shall result in the user's own risk and CONTECH expressly disclaims any liability or responsibility for such use. If discrepancies between the supplied information upon which the drawing is based and actual field conditions are encountered as site work progresses, these are to be resolved by the user. CONTECH shall not be held liable for re-evaluation of the design. CONTECH accepts no liability for designs based on missing, incomplete or inaccurate information supplied by others.

REVISION DESCRIPTION	DATE	MARK	BY

CDS4045-8-C - 888613-10  
DANCO REGIONAL FACILITY  
OWENSBORO, KY  
SITE DESIGNATION: MH 103

CONTECH

www.conteches.com  
6160 Centre Pointe Dr., Suite 400, West Chester, OH 45380  
800.338.1022 513.945.7000 513.945.7983 FAX

GDS

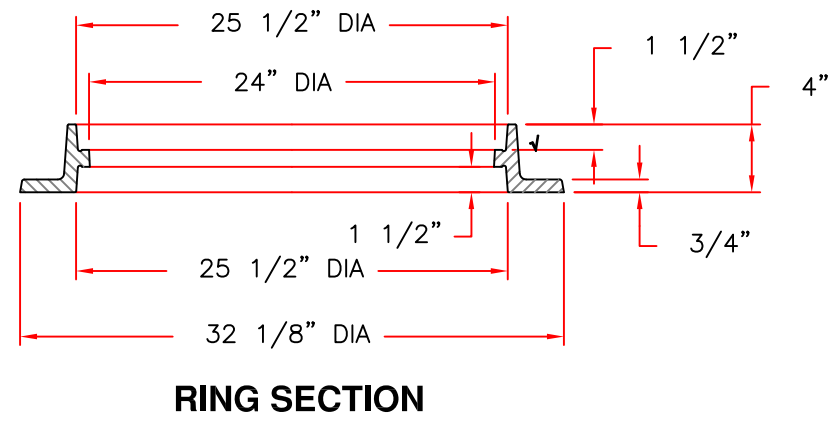
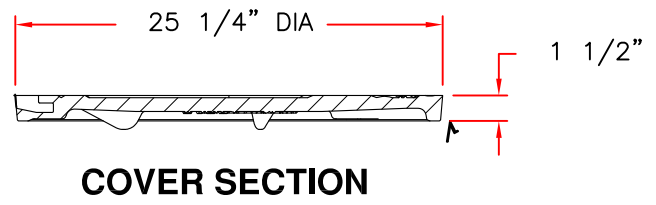
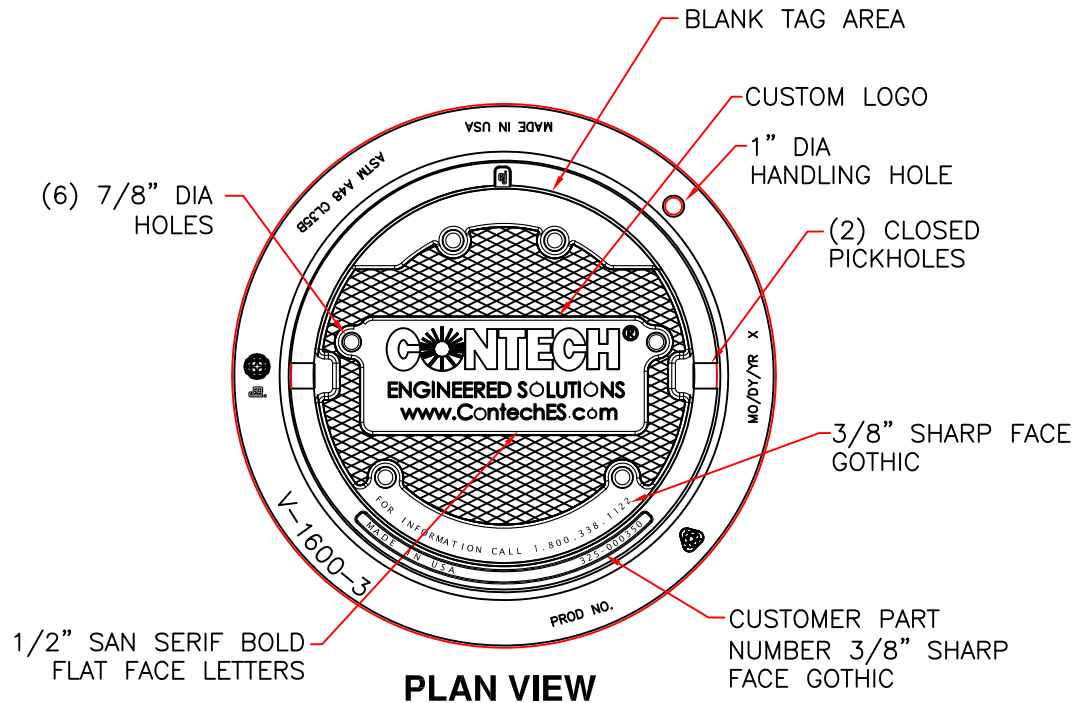
FOR PATENT INFORMATION, GO TO www.conteches.com/IP

DATE: 2/17/2026	
DESIGNED: MDB	DRAWN: MDB
CHECKED: MSB	APPROVED: MDB
PROJECT No.: 888613	SEQUENCE No.: 10
SHEET: 1 OF 2	

I:\MERLIN\PROJECT\ACTIVE\888613-10-CDS\DRAWINGS\888613-10-CDS4045-8-C-CONIFAB.DWG 3/20/2026 12:54 PM

# 26-1792 - 888613 Danco Regional Facility

## V1600-3 V1610-3 Assembly



**Product Number**  
41600389

**Design Features**

- Materials
- Frame  
Gray Iron (CL35B)
- Cover  
Gray Iron (CL35B)

- Design Load  
Heavy Duty
- Open Area  
n/a
- Coating  
Undipped
- √ Designates Machined Surface

**Certification**

- ASTM A48
- Country of Origin: USA

**Major Components**

41600310

41600374

**Drawing Revision**

05/02/2008 Designer: DEW

6/20/2017 Revised By: DAE

**Disclaimer**

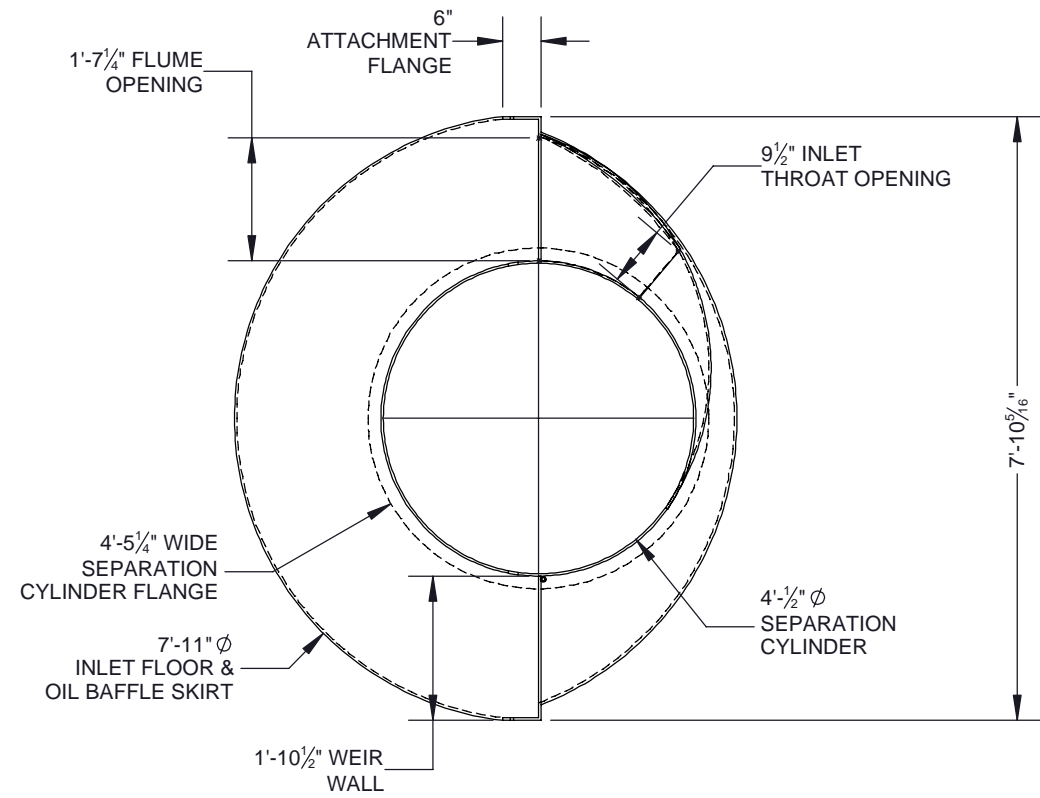
Weights (lbs./kg) dimensions (inches/mm) and drawings provided for your guidance. We reserve the right to modify specifications without prior notice.

CONFIDENTIAL: This drawing is the property of EJ GROUP, Inc., and embodies confidential information, registered marks, patents, trade secret information, and/or know how that is the property of EJ GROUP, Inc. Copyright © 2012 EJ GROUP, Inc. All rights reserved.

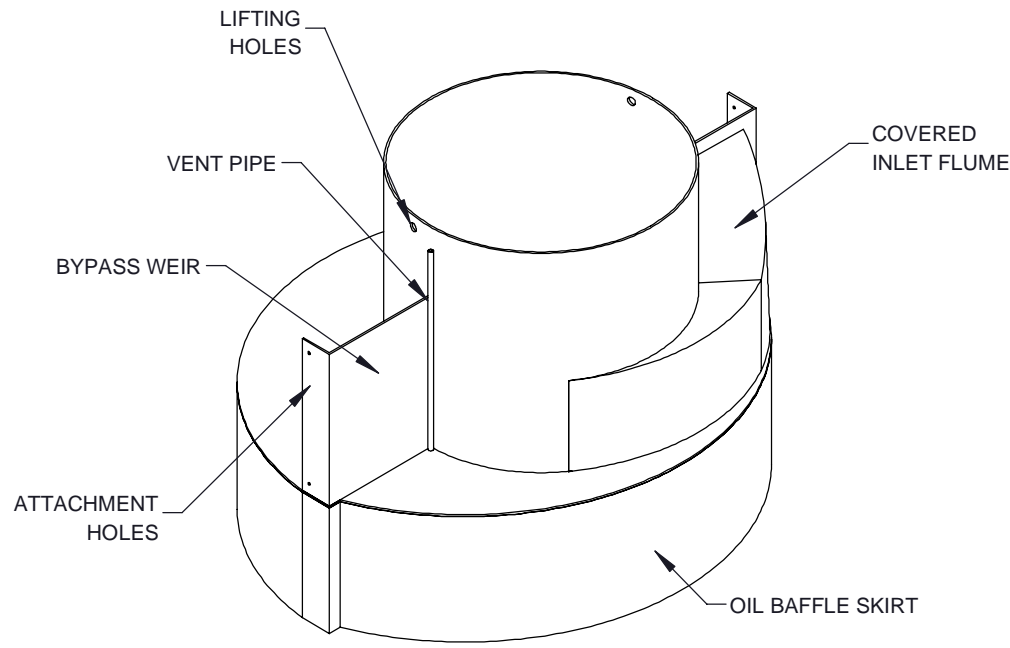
**Contact**

800 626 4653

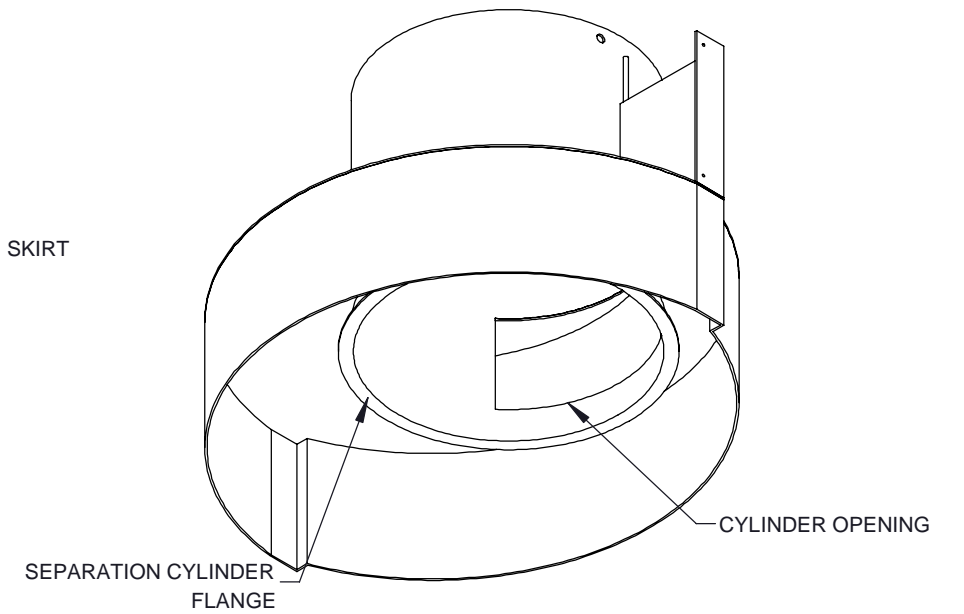
ejco.com



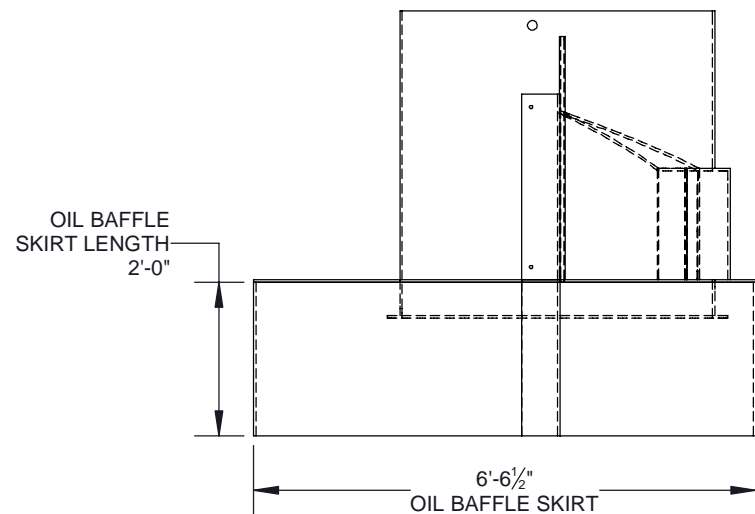
**PLAN VIEW**



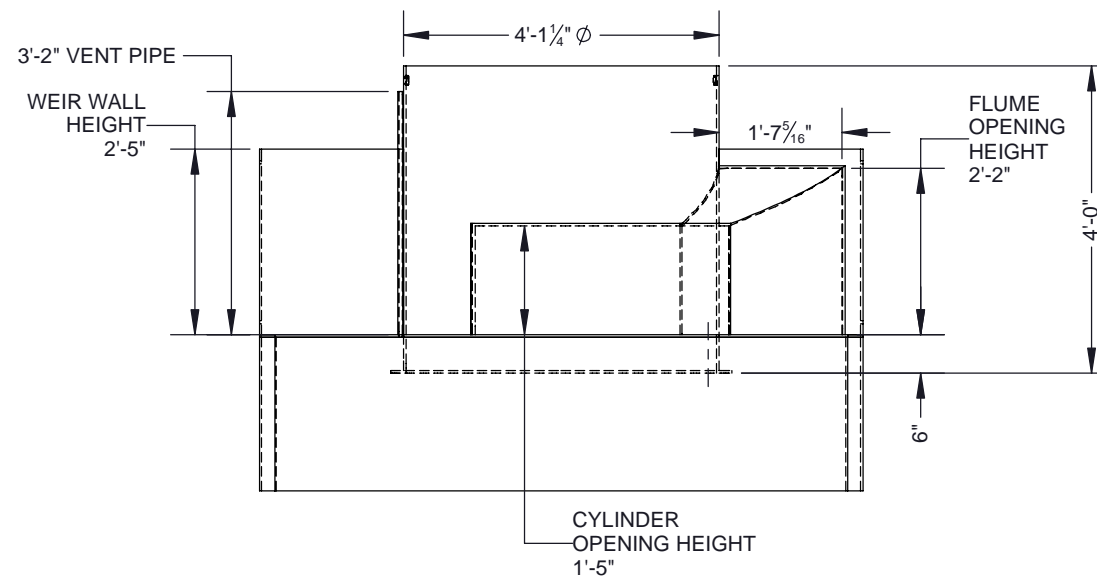
**ASSEMBLY TOP VIEW**



**ASSEMBLY BOTTOM VIEW**



**ELEVATION VIEW**



**SIDE VIEW**

NOTES:  
 1. SEE CDS UNIT ASSEMBLY AND INSTALLATION GUIDE FOR ADDITIONAL INFORMATION

The design and information shown on this drawing is provided as a service to the project owner, engineer and contractor by Contech Engineered Solutions LLC, or one of its affiliated companies ("Contech"). Neither this drawing, nor any part thereof, may be used, reproduced or modified in any manner without the prior written consent of Contech. Failure to comply is done at the user's own risk and Contech expressly disclaims any liability or responsibility for such use.

If discrepancies between the supplied information upon which the drawing is based and actual field conditions are encountered as site work progresses, these discrepancies must be reported to Contech immediately for re-evaluation of the design. Contech accepts no liability for designs based on missing, incomplete or inaccurate information supplied by others.

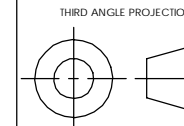


THIS PRODUCT MAY BE PROTECTED BY ONE OR MORE OF THE FOLLOWING U.S. PATENTS: 5,788,048; 6,641,720; 6,811,006; 6,881,788; RELATED FOREIGN PATENTS, OR OTHER PATENTS PENDING.



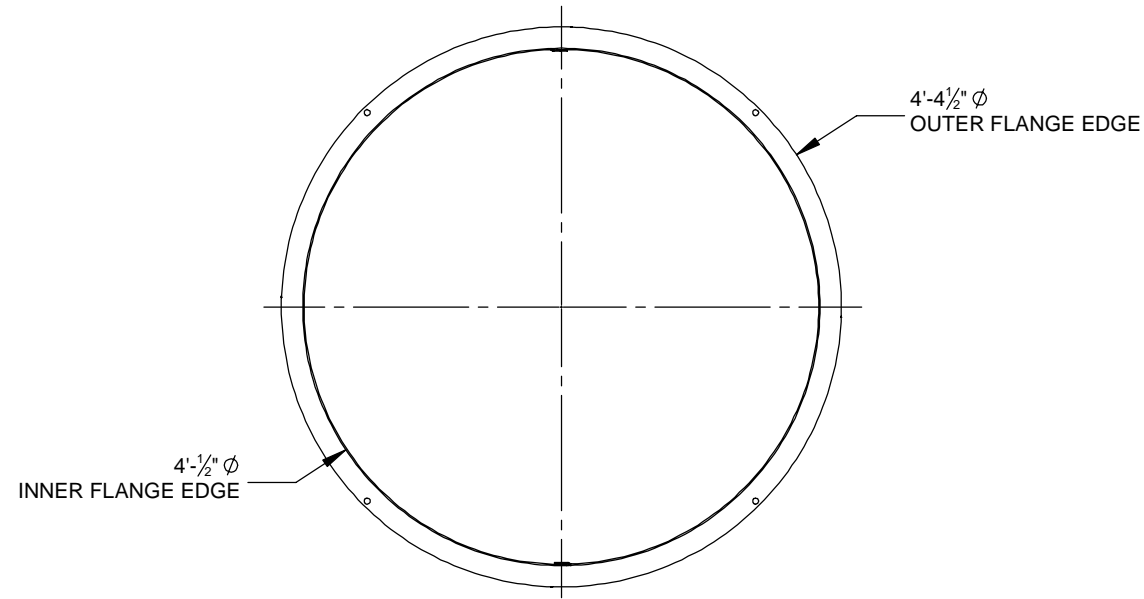
www.ContechES.com  
 9025 Centre Pointe Dr., Suite 400, West Chester, OH 45069  
 800-338-1122 513-645-7000 513-645-7993 FAX

REFERENCE DETAIL  
 CDS 4045-8-C  
 CONCENTRIC INTERNALS

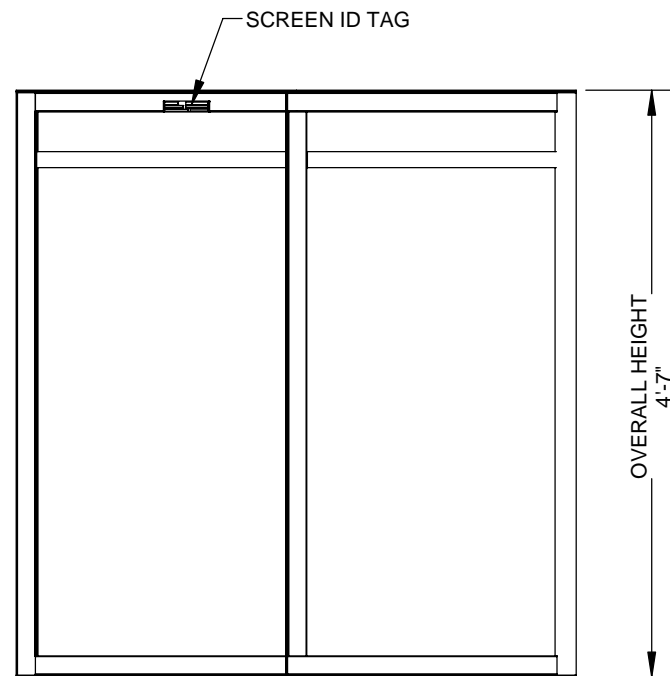


UNLESS OTHERWISE SPECIFIED DIMENSIONS ARE IN INCHES  
 TOLERANCES:  
 FRACTIONAL ± 1/16  
 ANGLES ± 1 DEGREE  
 TWO PLACE DECIMAL ± 0.06  
 THREE PLACE DECIMAL ± 0.030

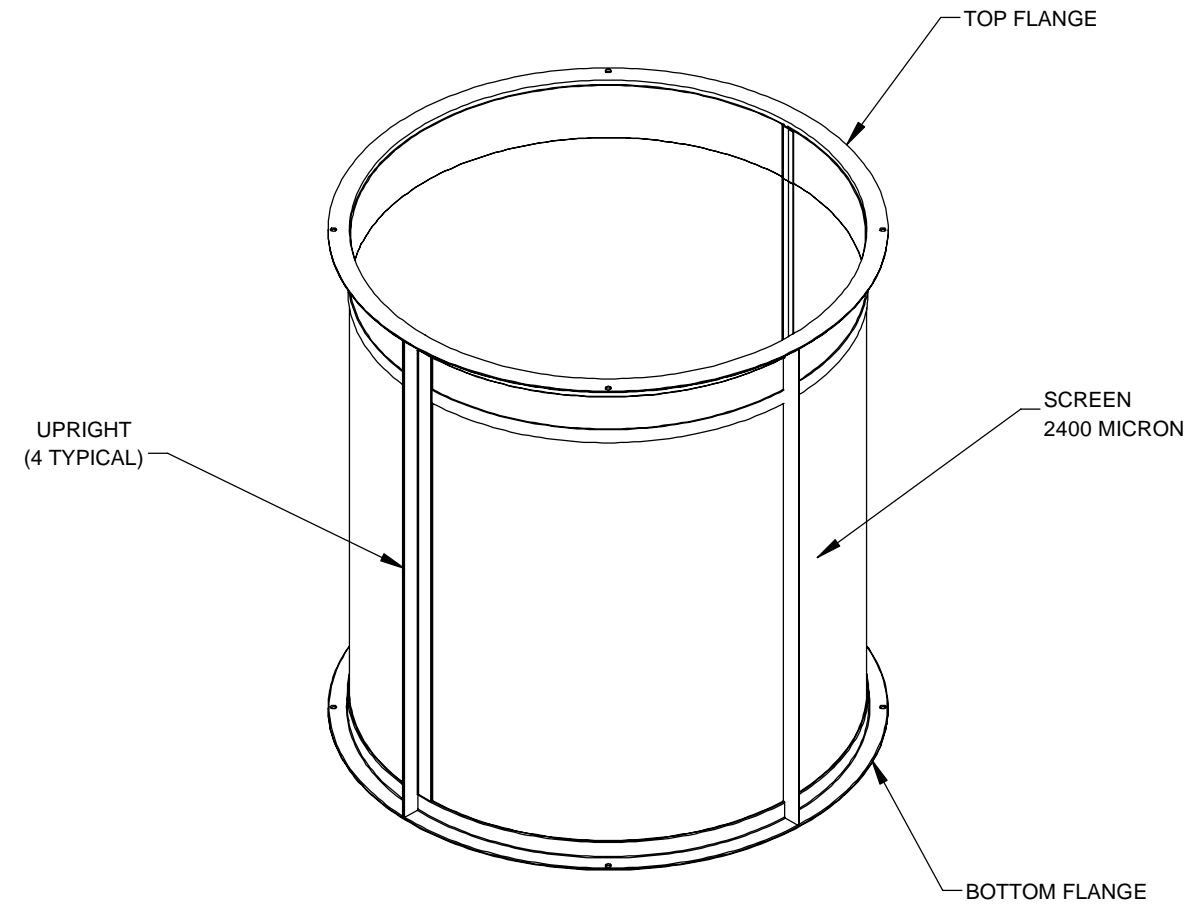
PART NUMBER: 325-000796	
APPROVED BY: M. BROOKS	DRAWN BY: C. CALDON
APPROVED BY DATE: 2022.03.08	DRAWN BY DATE: 2022.02.15
SCALE: N/A	REV: B
SHEET 1 OF 1	



**TOP VIEW**



**SIDE VIEW**



**ISOMETRIC VIEW**

NOTES:

1. SEE SITE SPECIFIC DRAWINGS FOR REQUIRED SCREEN ASSEMBLY
2. SEE CDS UNIT ASSEMBLY AND INSTALLATION GUIDE FOR ADDITIONAL INFORMATION

The design and information shown on this drawing is provided as a service to the project owner, engineer and contractor by Contech Engineered Solutions LLC, or one of its affiliated companies ("Contech"). Neither this drawing, nor any part thereof, may be used, reproduced or modified in any manner without the prior written consent of Contech. Failure to comply is done at the user's own risk and Contech expressly disclaims any liability or responsibility for such use.

If discrepancies between the supplied information upon which the drawing is based and actual field conditions are encountered as site work progresses, these discrepancies must be reported to Contech immediately for re-evaluation of the design. Contech accepts no liability for designs based on missing, incomplete or inaccurate information supplied by others.



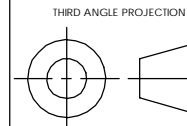
THIS PRODUCT MAY BE PROTECTED BY ONE OR MORE OF THE FOLLOWING U.S. PATENTS: 6,788,842; 6,641,723; 6,611,582; 6,441,774; RELATED FOREIGN PATENTS, OR OTHER PATENTS PENDING.



www.ContechES.com

9025 Centre Pointe Dr., Suite 400, West Chester, OH 45069  
800-338-1122 513-645-7000 513-645-7993 FAX

REFERENCE DETAIL  
SCREEN ASSEMBLY  
CDS4045 2400 MICRON



UNLESS OTHERWISE SPECIFIED DIMENSIONS ARE IN INCHES

TOLERANCES:  
FRACTIONAL ± 1/16  
ANGLES ± 1 DEGREE  
TWO PLACE DECIMAL ± 0.06  
THREE PLACE DECIMAL ± 0.030

PART NUMBER: <b>335-000390</b>	
APPROVED BY: <b>M. BROOKS</b>	DRAWN BY: <b>C. CALDON</b>
APPROVED BY DATE: <b>2021.12.13</b>	DRAWN BY DATE: <b>2022.02.16</b>
SCALE: <b>N/A</b>	REV: <b>C</b>
SHEET 1 OF 1	