

Job Name: 26-1792 888613 Danco Regional Facility
 Job Location: Owensboro, KY
 Contractor: Contech Engineering Solutions

Plant: Beaver Dam
 4/2/2026 3:13:40 PM

Tech: S. Felletter
 PC: C. Goff



Structure ID: 10-CDS4045-8-C

P4 MH096LD17SP

MH FLAT TOP SPEC. (2 - 24"Ø HOLES) F/G

- P5) 24" - CASTING HEIGHT - 4"
- P4) 96" - MH FLAT TOP SPEC. (2 - 24"Ø HOLES) F/G - 17"
- P3) 96" - MH RISER T/G - 60"
- P2) 96" - MH RISER T/G - 48"
- P1) 96" - MH MONOBASE 13F, Custom Ht T/n - 36"
- 1) CVSTENCILING
- 1) ASSEMBLY REQUIRED
- 3) 96" - Conseal CS-102 1.00"
- 2) Hole - 32

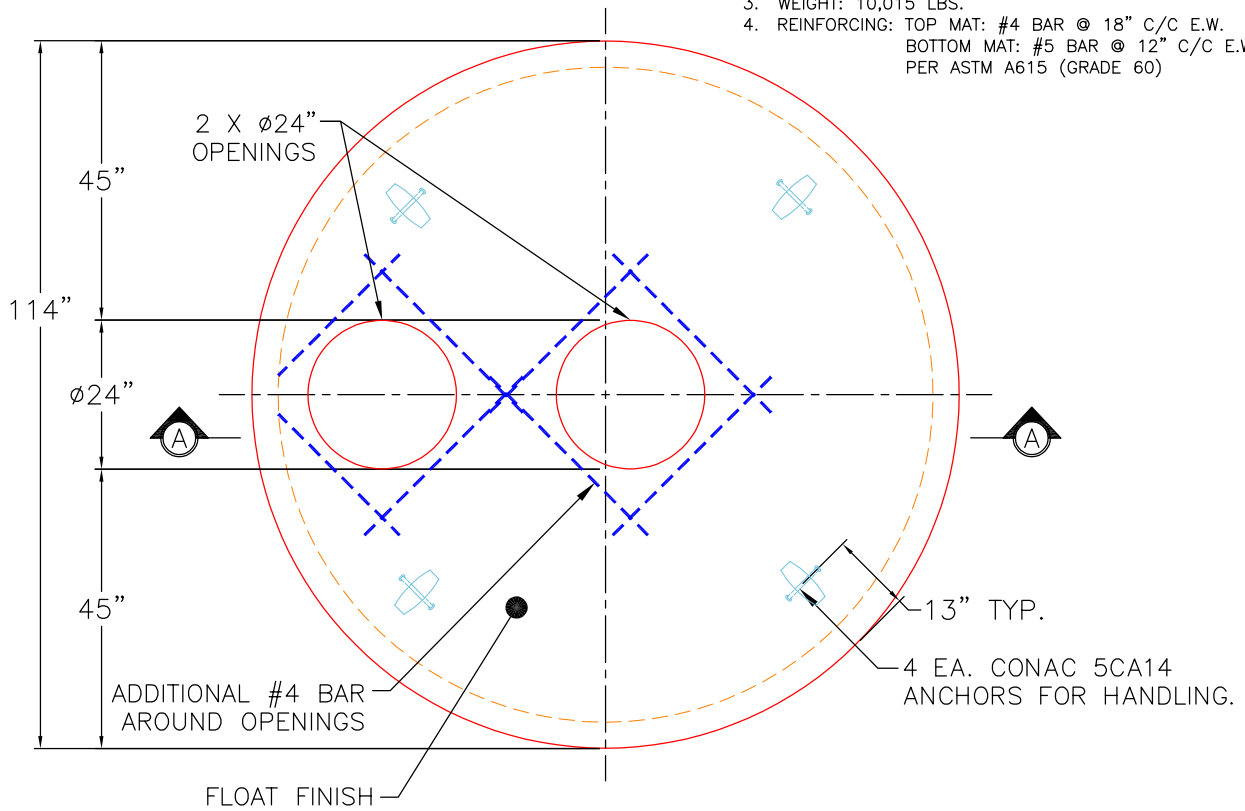
0 lb
 10015 lb
 13712 lb
 11958 lb
 20103 lb
 0 lb
 0 lb
 0 lb
 0 lb

 Structure Total: 55788 lb

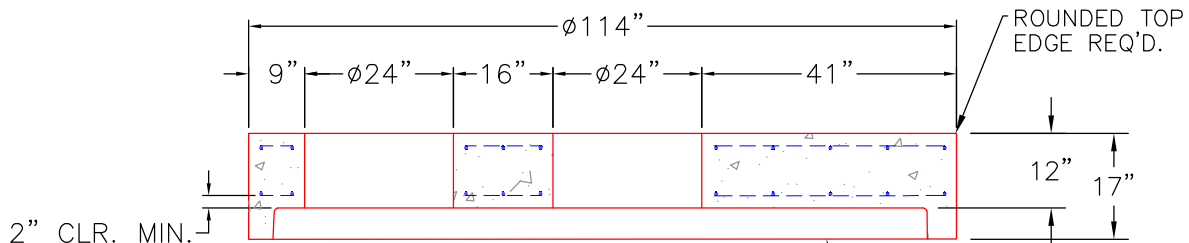
Structure Notes:
 4" CASTING BY OTHERS
 RISERS 1 & 2 TO BE MECHANICALLY ATTACHED BEFORE INSTALLATION OF INTERNAL MATERIALS
 LIFTING ANCHORS TO BE INSTALLED ON THE OUTSIDE OF THE STRUCTURE
 ICAST TO INSTALL THE INTERNALS
 CONTECH'S LOGO AS WELL AS THE INLET AND OUTLET MUST BE STENCILED ONTO THE STRUCTURE

GENERAL NOTES:

1. MANUFACTURED TO ASTM C-478 (LATEST REVISION).
2. CONCRETE 5,000 PSI AT 28 DAYS.
3. WEIGHT: 10,015 LBS.
4. REINFORCING: TOP MAT: #4 BAR @ 18" C/C E.W.
 BOTTOM MAT: #5 BAR @ 12" C/C E.W.
 PER ASTM A615 (GRADE 60)



PLAN VIEW



FRONT VIEW

Coating (Int):
 Coating (Ext):

Seam Up: Flat
 Seam Dn: Groove

Wall Thickness: 9"

Height (Ext): 17"

Weight (Net): 10015 lb
 Volume (Net): 2.56cu.yd