

Job Name: 26-1792 888613 Danco Regional Facility
 Job Location: Owensboro, KY
 Contractor: Contech Engineering Solutions

Plant: Beaver Dam
 4/2/2026 3:13:31 PM

Tech: S. Felletter
 PC: C. Goff



Structure ID: 10-CDS4045-8-C

P1 MH096BAVF

MH MONOBASE 13F, Custom Ht T/n

- P5) 24" - CASTING HEIGHT - 4"
- P4) 96" - MH FLAT TOP SPEC. (2 - 24"Ø HOLES) F/G - 17"
- P3) 96" - MH RISER T/G - 60"
- P2) 96" - MH RISER T/G - 48"
- P1) 96" - MH MONOBASE 13F, Custom Ht T/n - 36"
- 1) CVSTENCILING
- 1) ASSEMBLY REQUIRED
- 3) 96" - Conseal CS-102 1.00"
- 2) Hole - 32

0 lb
 10015 lb
 13712 lb
 11958 lb
 20103 lb
 0 lb
 0 lb
 0 lb
 0 lb

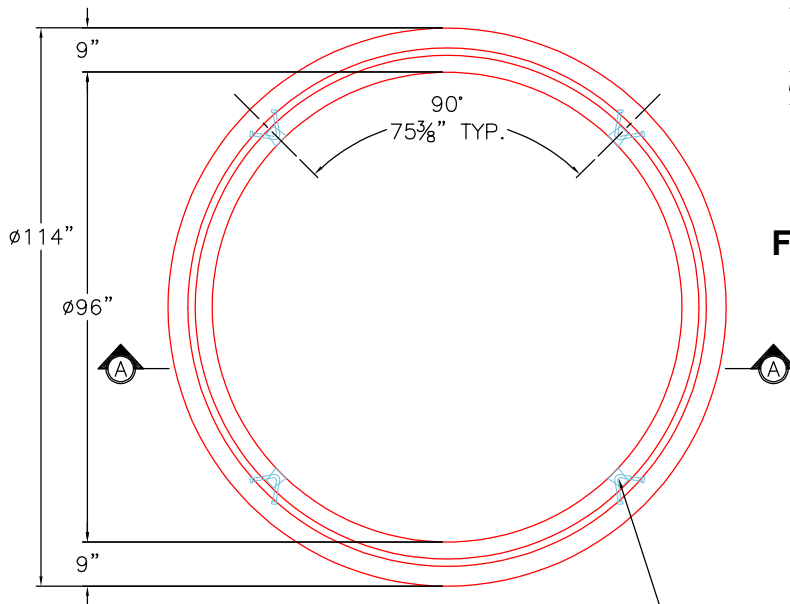
 Structure Total: 55788 lb

Structure Notes:
 4" CASTING BY OTHERS
 RISERS 1 & 2 TO BE MECHANICALLY ATTACHED BEFORE INSTALLATION OF INTERNAL MATERIALS
 LIFITNG ANCHORS TO BE INSTALLED ON THE OUTSIDE OF THE STRUCTURE
 ICAST TO INSTALL THE INTERNALS
 CONTECH'S LOGO AS WELL AS THE INLET AND OUTLET MUST BE STENCILED ONTO THE STRUCTURE

Rim: 395.5' Rim to Invert: 4.94' Slack: 2.244" Sump: 107.964" Step Position:

GENERAL NOTES:

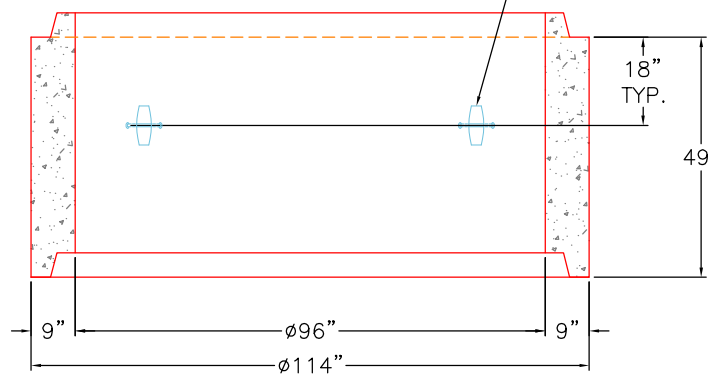
1. MANUFACTURED TO ASTM C-478 (LATEST REVISION).
2. CONCRETE 5,000 PSI AT 28 DAYS.
3. REINFORCING: WALLS - WWF AREA 0.24
 FLOOR - AREA 0.27 - #5 BAR @ 12" C/C TOP AND BOTTOM MAT.
4. WEIGHT: TOTAL - 20,103 LBS.
 FIRST POUR - 12,206 LBS
 SECOND POUR - 7,897 LBS
5. JOINT SEAL: CONCRETE SEALANTS INC. CS-102.
6. ICAST TO INSTALL INTERNALS.
7. CONTECH'S LOGO AS WELL AS THE INLETS AND OUTLETS MUST BE STENCILED ONTO THE STRUCTURE.



TOP VIEW

FIRST POUR DRAWING

4 EA. CONAC 6CA14 ANCHORS REQUIRED FOR HANDLING.



SECTION A-A

Coating (Int):
 Coating (Ext):

Seam Up: Tongue
 Seam Dn: n/a

Wall Thickness: 9"
 Floor Height: 13"

Height (Int): 36"
 Height (Ext): 49"

Weight (Net): 20103 lb
 Volume (Net): 5.14cu.yd

Job Name: 26-1792 888613 Danco Regional Facility
 Job Location: Owensboro, KY
 Contractor: Contech Engineering Solutions

Plant: Beaver Dam
 4/2/2026 3:13:31 PM

Tech: S. Felletter
 PC: C. Goff



Structure ID: 10-CDS4045-8-C

P1 MH096BAVF

MH MONOBASE 13F, Custom Ht T/n

- P5) 24" - CASTING HEIGHT - 4"
- P4) 96" - MH FLAT TOP SPEC. (2 - 24"Ø HOLES) F/G - 17"
- P3) 96" - MH RISER T/G - 60"
- P2) 96" - MH RISER T/G - 48"
- P1) 96" - MH MONOBASE 13F, Custom Ht T/n - 36"
- 1) CVSTENCILING
- 1) ASSEMBLY REQUIRED
- 3) 96" - Conseal CS-102 1.00"
- 2) Hole - 32

0 lb
 10015 lb
 13712 lb
 11958 lb
 20103 lb
 0 lb
 0 lb
 0 lb
 0 lb

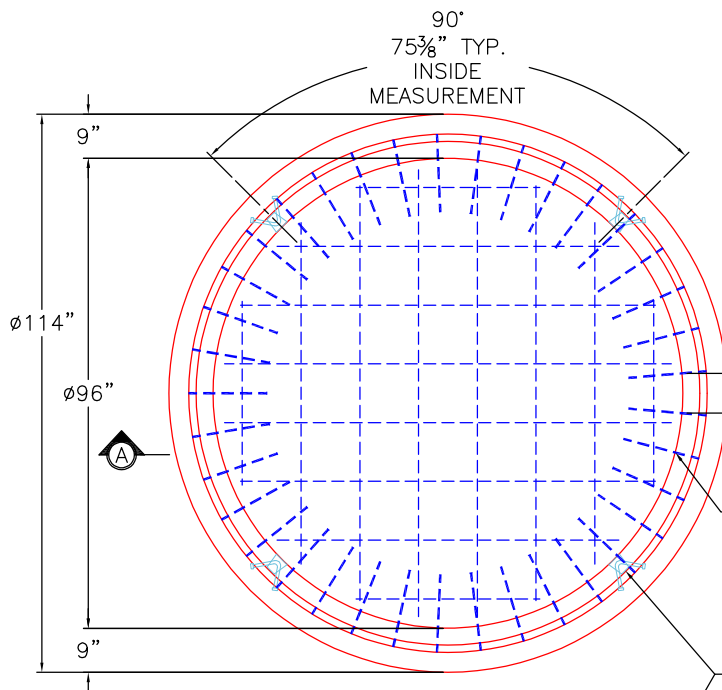
 Structure Total: 55788 lb

Structure Notes:
 4" CASTING BY OTHERS
 RISERS 1 & 2 TO BE MECHANICALLY ATTACHED BEFORE INSTALLATION OF INTERNAL MATERIALS
 LIFITNG ANCHORS TO BE INSTALLED ON THE OUTSIDE OF THE STRUCTURE
 ICAST TO INSTALL THE INTERNALS
 CONTECH'S LOGO AS WELL AS THE INLET AND OUTLET MUST BE STENCILED ONTO THE STRUCTURE

Rim: 395.5' Rim to Invert: 4.94' Slack: 2.244" Sump: 107.964" Step Position:

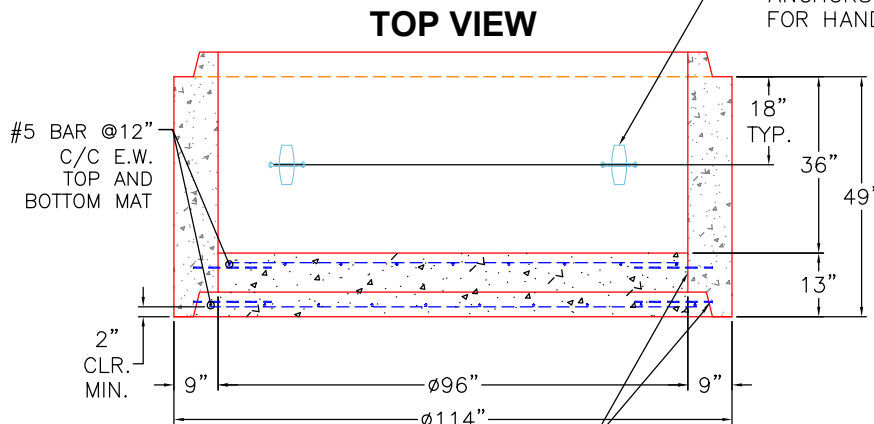
GENERAL NOTES:

1. MANUFACTURED TO ASTM C-478 (LATEST REVISION).
2. CONCRETE 5,000 PSI AT 28 DAYS.
3. REINFORCING: WALLS - WWF AREA 0.24 FLOOR - AREA 0.27 - #5 BAR @ 12" C/C TOP AND BOTTOM MAT.
4. WEIGHT: TOTAL - 20,103 LBS.
 FIRST POUR - 12,206 LBS
 SECOND POUR - 7,897 LBS
5. JOINT SEAL: CONCRETE SEALANTS INC. CS-102.
6. ICAST TO INSTALL INTERNALS.
7. CONTECH'S LOGO AS WELL AS THE INLETS AND OUTLETS MUST BE STENCILED ONTO THE STRUCTURE.



SECOND POUR DRAWING

8" C-C TYP. INSIDE MEASUREMENT
 DOWEL IN (74) 16" LONG #5 BAR (GRADE 60) 8" C-C TOP AND BOTTOM MAT. 4" MIN. PENETRATION INTO THE WALLS REQUIRED.
 4 EA. CONAC 6CA14 ANCHORS REQUIRED FOR HANDLING.



SECTION A-A

Coating (Int): Coating (Ext):	Seam Up: Tongue Seam Dn: n/a	Wall Thickness: 9" Floor Height: 13"	Height (Int): 36" Height (Ext): 49"	Weight (Net): 20103 lb Volume (Net): 5.14cu.yd
----------------------------------	---------------------------------	---	--	---