



**Structure ID: QL18 HW**

**P1 HWDBLCUSTOM**

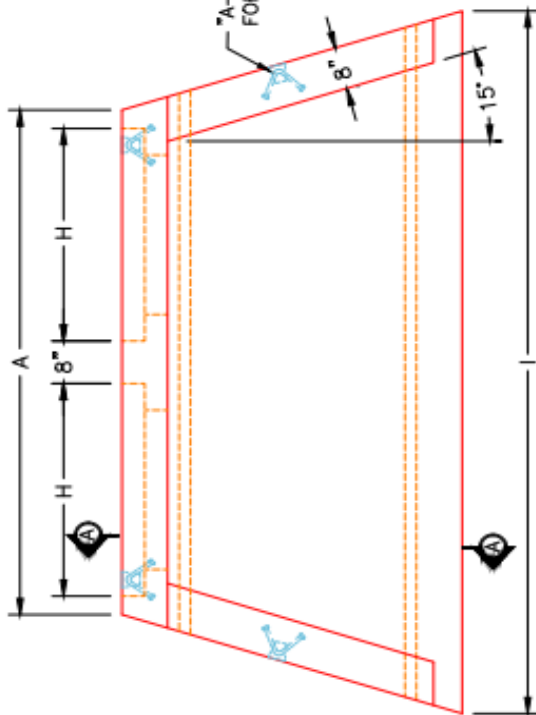
**30" x 19" - DOUBLE SLOPED & FLARED HEADWALL (ELL. RCP) F**

DIMENSIONS										
PIPE Ø	A	B	C	D	E	F	G	H	I	WEIGHT
24" EQ.(19"x30")	7'-11"	4'-4"	2'-10"	1'-6"	5'-0"	4"	3 1/4"	3'-4"	11'-0"	6,970 LBS.

**NOTES:**

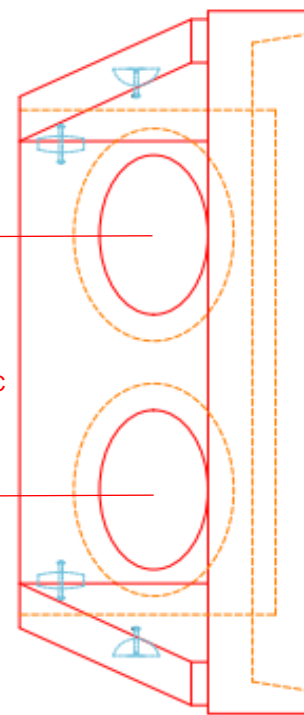
1. CONCRETE: 4500 PSI @ 28 DAYS.
2. REINFORCING: #4 BAR @ 12" C/C E.W.-GRADE 60, (WITH 2" CONCRETE COVER MINIMUM)
3. REINFORCING BARS TO BE TACK WELDED OR TIED.
4. PIPE AND LIFTING ANCHOR POCKETS TO BE GROUTED WITH KYTC APPROVED NON-SHRINK GROUT.
5. DRAWING TO BE USED IN CONJUNCTION WITH KYTC STD. DRAWING RDH-020-03 AND THE STANDARD SPECIFICATIONS FOR ROAD AND BRIDGE CONSTRUCTION.
6. 3/8" CHAMFER ON ALL EXPOSED EDGES.
7. PREFORMED STEPPED HOLE SIZED AS PER O.D. OF PIPE + 3"-4".

"A"-ANCHOR LIFTING SYSTEM FOR PLANT & FIELD HANDLING.

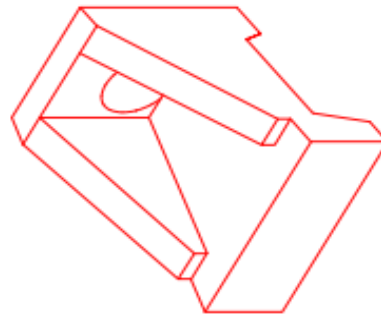


**PLAN VIEW**

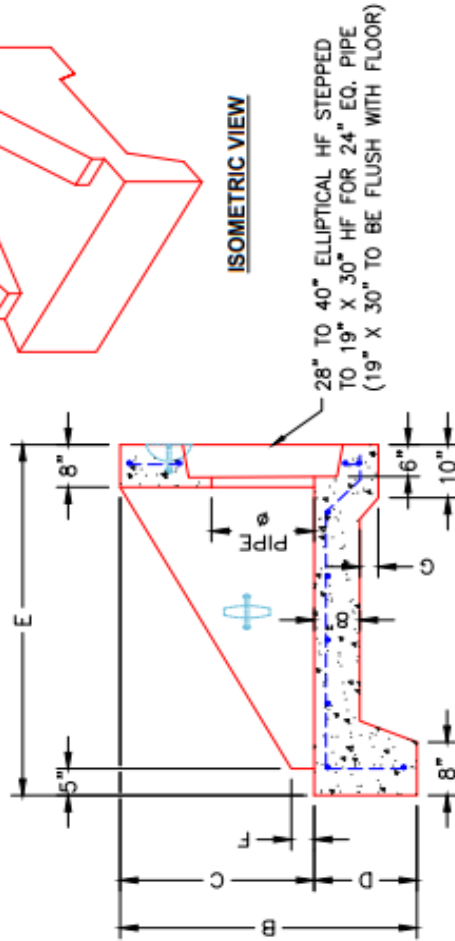
48" C.C



**FRONT ELEVATION**



**ISOMETRIC VIEW**



**SECTION A-A**

REVISION INFORMATION	
REV. DATE:	NO REVISIONS TO DATE

SUBMITTAL DRAWING: 19" X 30" DBL HEADWALL	
CUSTOMER: HAYES PIPE SUPPLY	
PROJECT: TRACTOR SUPPLY DRAINAGE REPAIRS	
STRUCTURE: QL18 HW	
QUOTE/SALES ORDER NO: 26-1789	DRAWN BY: FMT
PC: E. BRADLEY	SCALE: NTS
DATE: 4/3/26	PG. 1 of 1

