

Job Name: 26-1789 - Tractor Supply Drainage Repairs
Job Location: Woodbury, TN
Contractor: Hayes Pipe Supply

PC: E. Bradley
 TECH: Jared - F
 Plant: 100



Structure ID: JB1 ST-JB

Spec: Storm
 Type: BX 8inW, 8inF
 Size: 36" x 96"

Rim: 690.2'
 Invert: 682.25'
 Rim to Invert: 7.95'

Sump: 0"
 Floor (Top): 682.25'
 Floor Height: 8"

Floor (Bot): 681.583'
 Overall Height: 8.583'
 Slack: 0.4"

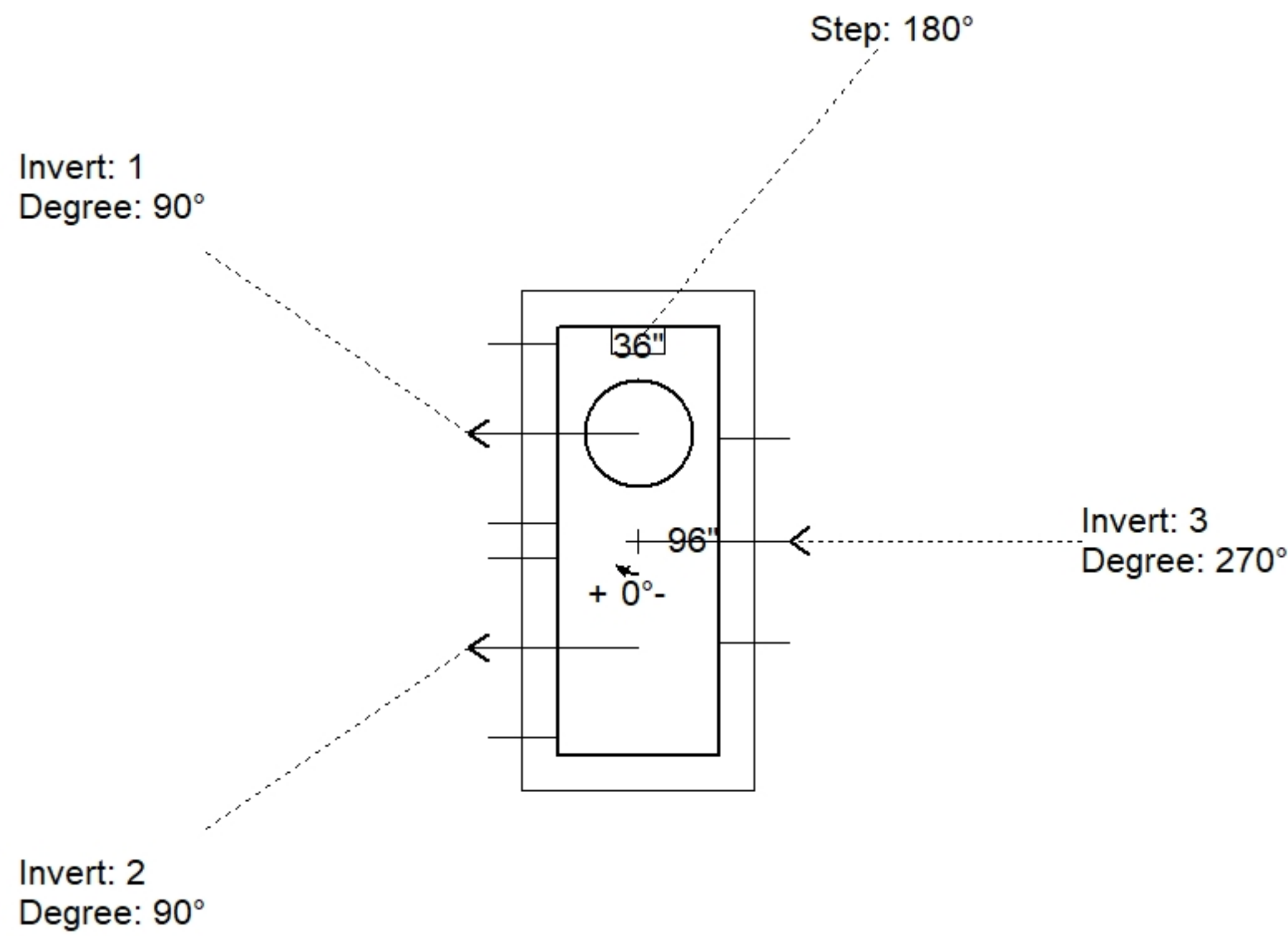
Structure Notes:

1. PER ASTM C-913 SPECIFICATIONS
2. CONCRETE = 4,000 PSI AT 48 DAYS
3. NO INVERT CHANNEL
4. CASTING SUPPLIED BY OTHERS (JBS 1150 F/C STORM)

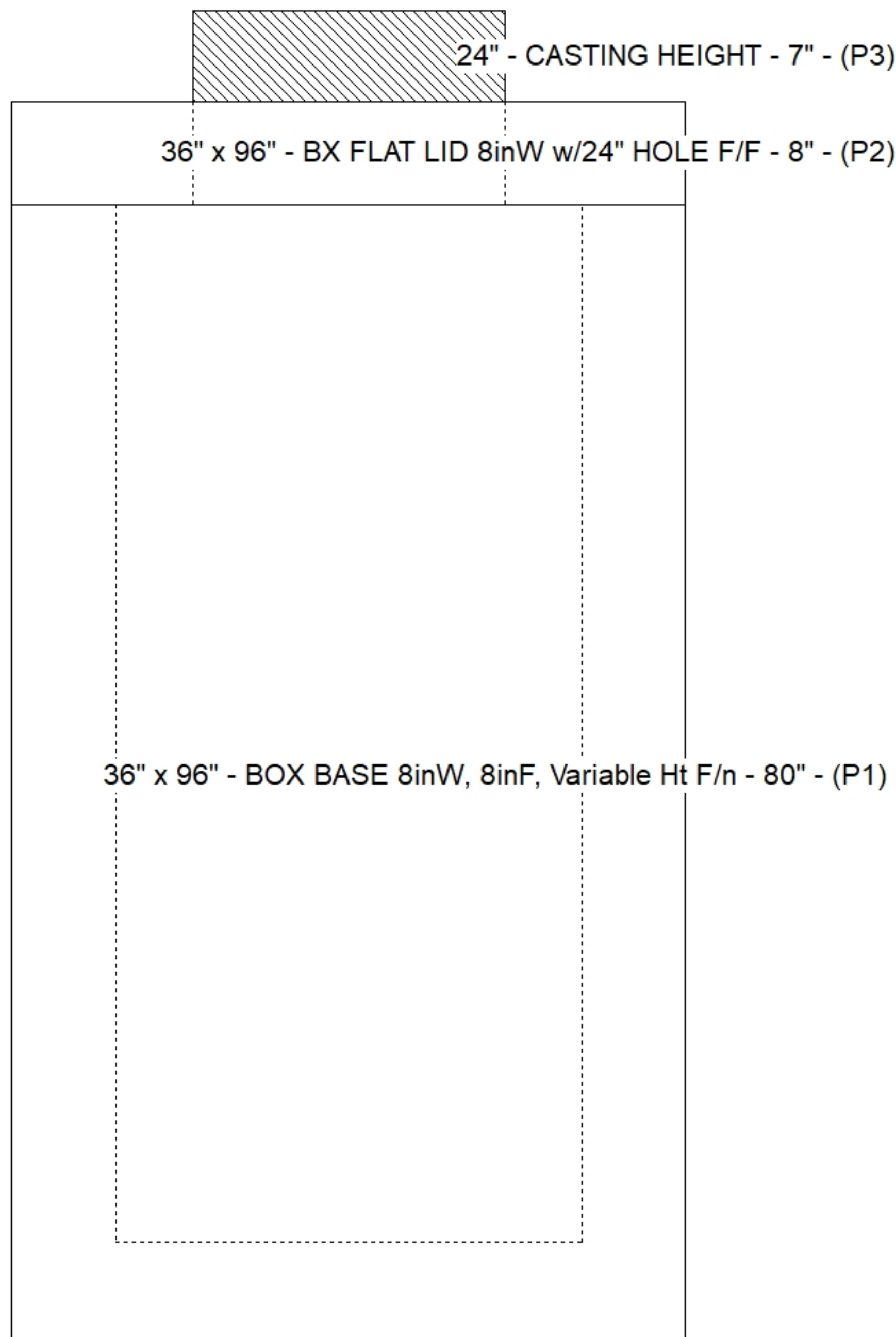
REINFORCING PER ASTM A615 (GRADE 60)
 - TOP SLAB (As .62) #5 BARS AT 6" C.C.E.W.
 - WALLS (As .12) #5 BARS AT 12" C.C.E.W.
 - FLOOR (As .12) #5 BARS AT 12" C.C.E.W.

STRUCTURE SUMMARY:

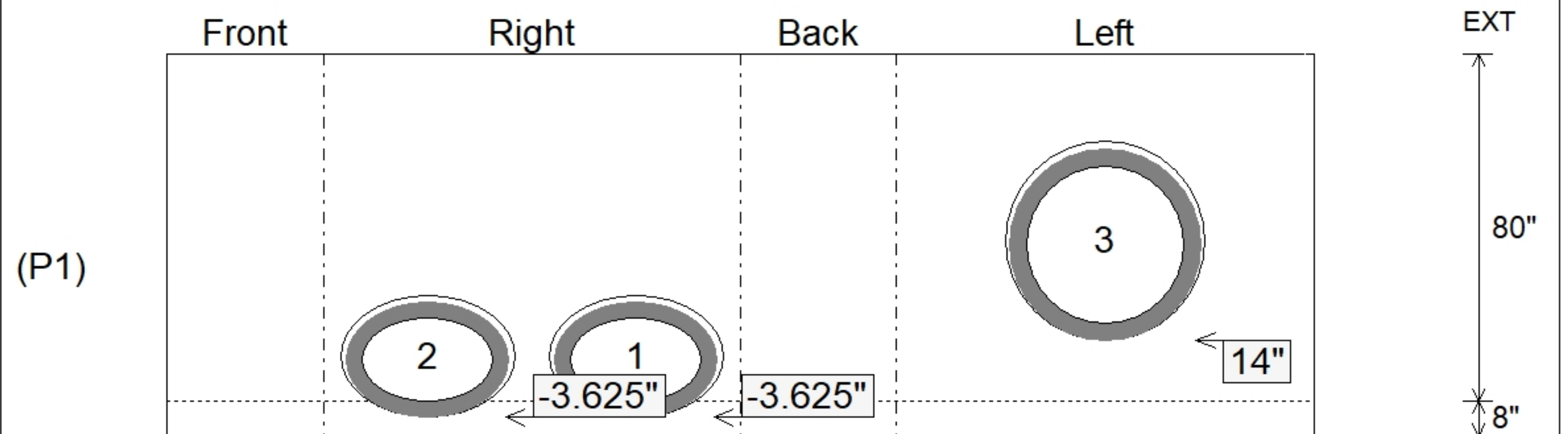
P3) 24" - CASTING HEIGHT - 7"	0 lb
P2) 36" x 96" - BX FLAT LID 8inW w/24" HOLE F/F - 8"	3606 lb
P1) 36" x 96" - BOX BASE 8inW, 8inF, Variable Ht F/n - 80"	17509 lb
1) SECONDARY POUR	0 lb
1) 36" x 96" - Conseal CS-102 1.00"	0 lb
2) Hole - 40 x 28	0 lb
1) Hole - 46	0 lb
8) MH Step ML-10-TDS-NCR - 10"	0 lb
Structure Total:	21115 lb



Position	Elev	Angle	Pipe	Pipe OD	Hole	Connector	Up ()	Ref
Rim	690.2'							
Reducer								
Invert 1	682.25'	90°	30" x 19" ELL RCP	37.375" x 26.438"	40" x 28"	Hole 40 x 28	-3.625"	P1
Invert 2	682.25'	90°	30" x 19" ELL RCP	37.375" x 26.438"	40" x 28"	Hole 40 x 28	-3.625"	P1
Invert 3	683.75'	270°	36" RCP B WALL	44"	46"	Hole 46	14"	P1
Invert 4								
Invert 5								
Invert 6								
Invert 7								
Invert 8								



Cast (Int. Dim.) - Interior Dimensions



Submittal Drawing
 4/14/2026 10:44:35 AM

SUBMITTAL
 APPROVED BY: