

Job Name: 26-1785 - Horse Cave Vault
 Job Location: Horse Cave, KY
 Contractor: Stewart Richey

Plant: 100
 4/10/2026 3:30:58 PM

Tech: Jared - F
 PC: T. Lewis

Structure ID: QL1

P2 BX072096-08LD08S

BX FLAT TOP 8"W w/36"x36" HATCH F/F

- P3) 36" x 36" - HATCH (CAST FLUSH) - 3"
- P2) 72" x 96" - BX FLAT TOP 8"W w/36"x36" HATCH F/F - 8"
- P1) 72" x 96" - BOX BASE 8inW, 8inF, Variable Ht F/n - 60"
- 1) HATCH (Alum.) - HALLIDAY S1R 36"x36"
- 1) 72" x 96" - Conseal CS-102 1.00" (Double)
- 1) 36" x 36" - Conseal CS-102 1.00" (Double)
- 2) Hole - 8
- 1) Hole - 4

100 lb
 5746 lb
 21363 lb
 65 lb
 0 lb
 0 lb
 0 lb
 0 lb

 27274 lb

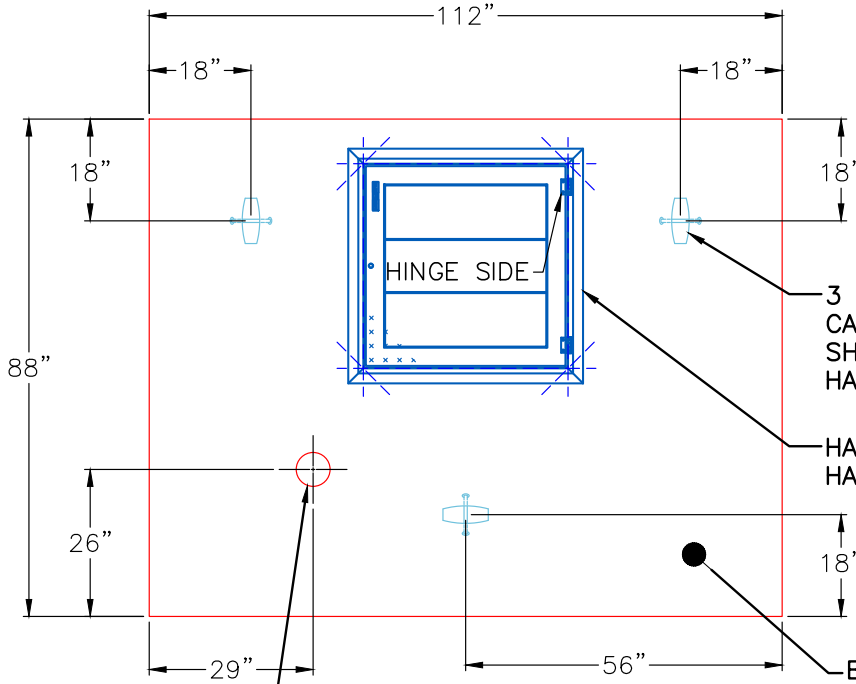
Structure Total:

Structure Notes:

1. PER ASTM C913 SPECIFICATIONS.
 2. CONCRETE = 4,000 PSI AT 28 DAYS.
 3. HATCH BY ICAST (HALLIDAY S1R 36"x36")
- REINFORCING PER ASTM A615 (GRADE 60).
- TOP SLAB #5 BARS AT 6" C.C.E.W.
 - WALLS #5 BARS AT 12" C.C.E.W.
 - FLOOR #5 BARS AT 12" C.C.E.W.

GENERAL NOTES:

1. MANUFACTURED TO ASTM C-913 (LATEST REVISION).
2. CONCRETE: 4,000 PSI AT 28 DAYS.
3. REINFORCING: #5 BAR @ 6" E.W. O.C. (GRADE 60).
4. HATCH: HALLIDAY S1R 36" X 36" HATCH PROVIDED BY ICAST
5. HATCH TO BE CAST INTO TOP OF LID.

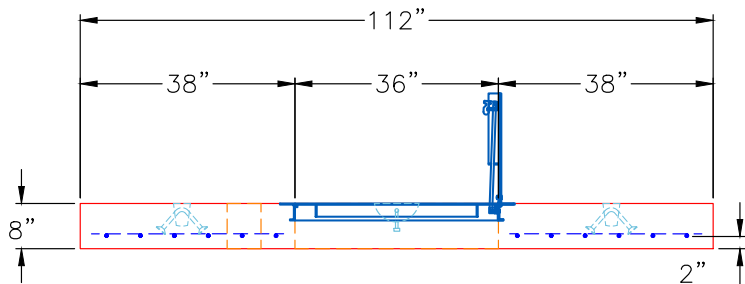


3 EA. CONAC 4CA12 ANCHORS
 CAST-IN EACH SECTION AS
 SHOWN FOR PLANT & FIELD
 HANDLING.

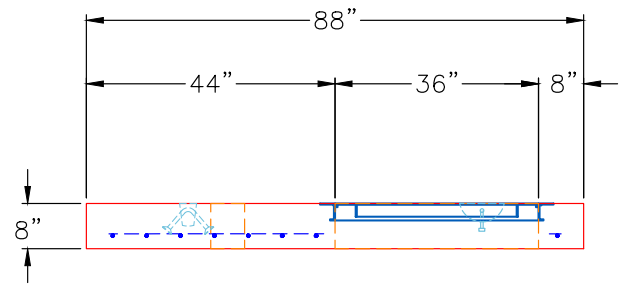
HALLIDAY W1S 36" X 36"
 HATCH PROVIDED BY ICAST.

6" HOLE FOR VALVE
 INDICATOR POST

PLAN VIEW



FRONT VIEW



RIGHT VIEW

Coating (Int):
 Coating (Ext):

Seam Up: Flat
 Seam Dn: Flat

Wall Thickness: 8"

Height (Ext): 8"

Weight (Net): 5746 lb
 Volume (Net): 1.47cu.yd