

Job Name: 26-1785 - Horse Cave Vault
 Job Location: Horse Cave, KY
 Contractor: Stewart Richey

Plant: 100
 4/10/2026 3:30:39 PM

Tech: Jared - F
 PC: T. Lewis



Structure ID: QL1

P1 BX7296-08W08F-VF

BOX BASE 8inW, 8inF, Variable Ht F/n

- P3) 36" x 36" - HATCH (CAST FLUSH) - 3"
- P2) 72" x 96" - BX FLAT TOP 8"W w/36"x36" HATCH F/F - 8"
- P1) 72" x 96" - BOX BASE 8inW, 8inF, Variable Ht F/n - 60"
- 1) HATCH (Alum.) - HALLIDAY S1R 36"x36"
- 1) 72" x 96" - Conseal CS-102 1.00" (Double)
- 1) 36" x 36" - Conseal CS-102 1.00" (Double)
- 2) Hole - 8
- 1) Hole - 4

100 lb
 5746 lb
 21363 lb
 65 lb
 0 lb
 0 lb
 0 lb
 0 lb
 0 lb

 Structure Total: 27274 lb

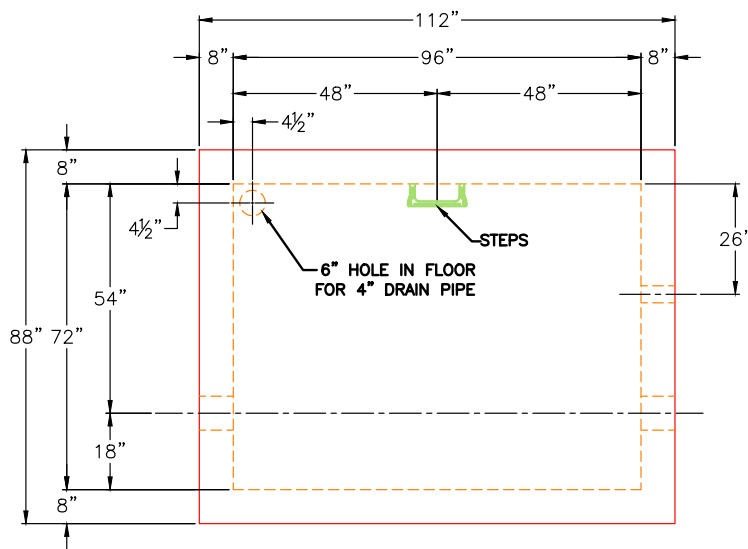
Structure Notes:

1. PER ASTM C913 SPECIFICATIONS.
2. CONCRETE = 4,000 PSI AT 28 DAYS.
3. HATCH BY ICAST (HALLIDAY S1R 36"x36")

REINFORCING PER ASTM A615 (GRADE 60).

- TOP SLAB #5 BARS AT 6" C.C.E.W.
- WALLS #5 BARS AT 12" C.C.E.W.
- FLOOR #5 BARS AT 12" C.C.E.W.

Rim: 5.667' Rim to Invert: 4.667' Slack: 0.004" Sump: 12" Step Position: 270°

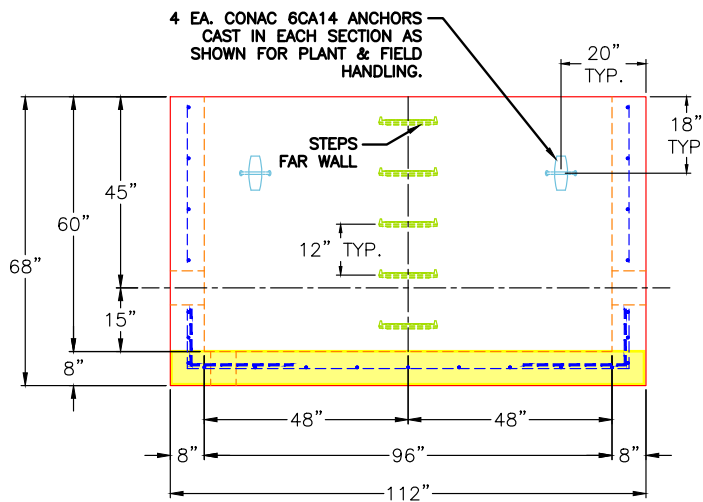


PLAN VIEW

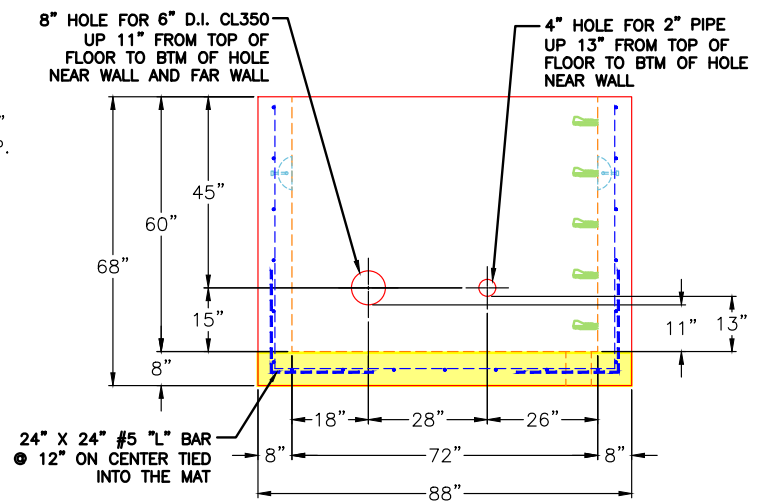
GENERAL NOTES:

1. MANUFACTURED TO ASTM C-913 (LATEST REVISION).
2. CONCRETE: 4,000 PSI AT 28 DAYS.
3. REINFORCING: #5 BAR @ 12" E.W. O.C. (GRADE 60).
4. WEIGHT:
 FIRST POUR - 6,617 LBS.
 SECOND POUR - 14,746 LBS.
 TOTAL - 21,363 LBS.

FIRST POUR DRAWING



FRONT VIEW



RIGHT VIEW

Coating (Int):
 Coating (Ext):

Seam Up: Flat
 Seam Dn: n/a

Wall Thickness: 8"
 Floor Height: 8"

Height (Int): 60"
 Height (Ext): 68"

Weight (Net): 21363 lb
 Volume (Net): 5.46cu.yd

Job Name: 26-1785 - Horse Cave Vault
 Job Location: Horse Cave, KY
 Contractor: Stewart Richey

Plant: 100
 4/10/2026 3:30:39 PM

Tech: Jared - F
 PC: T. Lewis



Structure ID: QL1

P1A BX7296-08W08F-VF

BOX BASE 8inW, 8inF, Variable Ht F/n

- P3) 36" x 36" - HATCH (CAST FLUSH) - 3"
- P2) 72" x 96" - BX FLAT TOP 8"W w/36"x36" HATCH F/F - 8"
- P1) 72" x 96" - BOX BASE 8inW, 8inF, Variable Ht F/n - 60"
- 1) HATCH (Alum.) - HALLIDAY S1R 36"x36"
- 1) 72" x 96" - Conseal CS-102 1.00" (Double)
- 1) 36" x 36" - Conseal CS-102 1.00" (Double)
- 2) Hole - 8
- 1) Hole - 4

100 lb
 5746 lb
 21363 lb
 65 lb
 0 lb
 0 lb
 0 lb
 0 lb
 0 lb

 Structure Total: 27274 lb

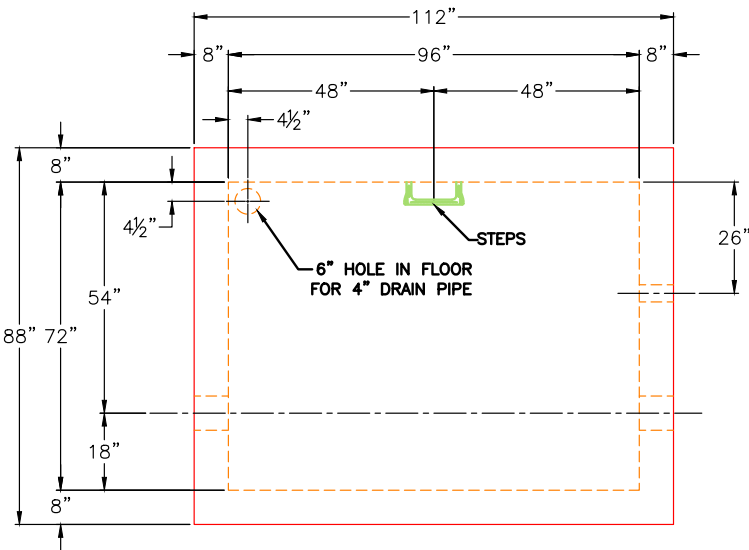
Structure Notes:

1. PER ASTM C913 SPECIFICATIONS.
2. CONCRETE = 4,000 PSI AT 28 DAYS.
3. HATCH BY ICAST (HALLIDAY S1R 36"x36")

REINFORCING PER ASTM A615 (GRADE 60).

- TOP SLAB #5 BARS AT 6" C.C.E.W.
- WALLS #5 BARS AT 12" C.C.E.W.
- FLOOR #5 BARS AT 12" C.C.E.W.

Rim: 5.667' Rim to Invert: 4.667' Slack: 0.004" Sump: 12" Step Position: 270°

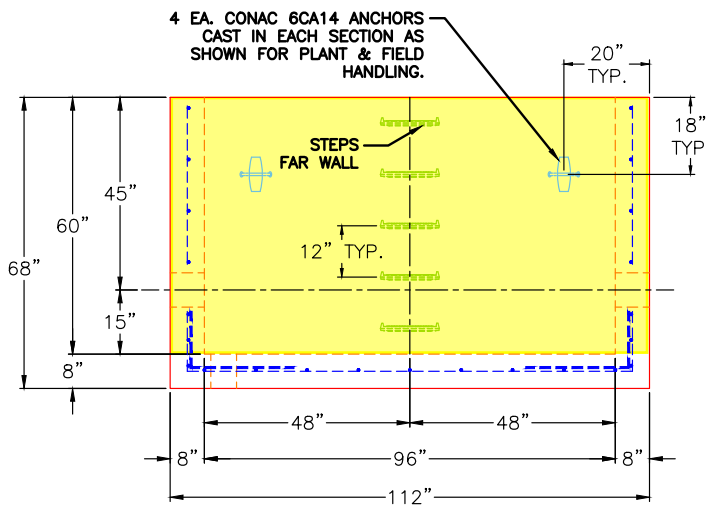


PLAN VIEW

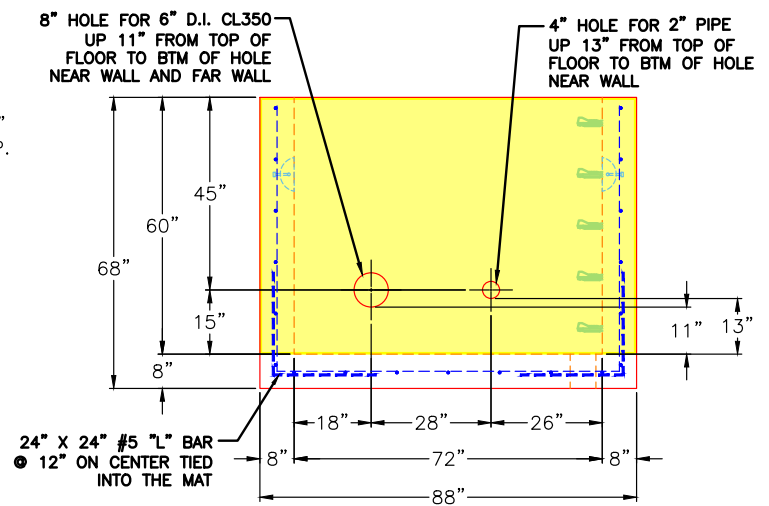
GENERAL NOTES:

1. MANUFACTURED TO ASTM C-913 (LATEST REVISION).
2. CONCRETE: 4,000 PSI AT 28 DAYS.
3. REINFORCING: #5 BAR @ 12" E.W. O.C. (GRADE 60).
4. WEIGHT:
 FIRST POUR - 6,617 LBS.
 SECOND POUR - 14,746 LBS.
 TOTAL - 21,363 LBS.

SECOND POUR DRAWING



FRONT VIEW



RIGHT VIEW

Coating (Int):
 Coating (Ext):

Seam Up: Flat
 Seam Dn: n/a

Wall Thickness: 8"
 Floor Height: 8"

Height (Int): 60"
 Height (Ext): 68"

Weight (Net): 21363 lb
 Volume (Net): 5.46cu.yd