

Job Name: 26-1767 - 7007 Moore's Lane
 Job Location: Franklin, TN
 Contractor: Convergent Water Technologies

Plant: Beaver Dam
 4/9/2026 7:46:01 AM

Tech: J. Coppage
 PC: C. Goff



Structure ID: QL1 ST-CI

P1 BX4848-08BAVF

BOX BASE 8inW, 8inF, Variable Ht

- P3) CASTING (cast in) - 0
 P2) 48" x 48" - BX FLAT LID 8inW SPEC. W/ MCS-288 - 6"
 P1) 48" x 48" - BOX BASE 8inW, 8inF, Variable Ht - 38"
 1) ASSEMBLY REQUIRED
 1) 48" x 48" - Conseal CS-102 1.00"
 1) Weir - 48"x25"
 1) Horiz Slot - 46"x4"

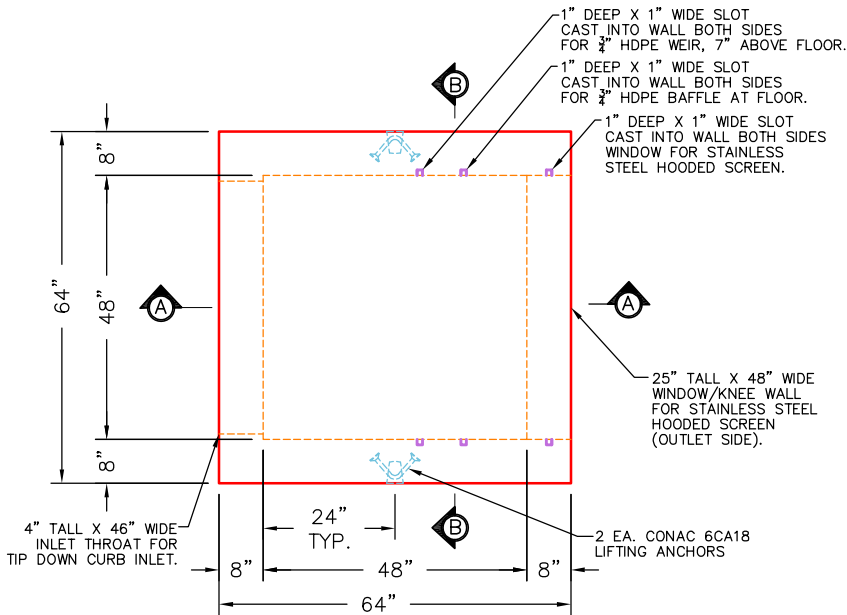
0 lb
 1830 lb
 7741 lb
 0 lb
 0 lb
 0 lb
 0 lb

 Structure Total: 9570 lb

- Structure Notes:**
 1. JR HOE MCS-288 STORM BY ICAST.
 2. CASTING FRAME TO BE CAST INTO THE TOP SLAB.
 3. MANUFACTURED PER ASTM C-913 (LATEST REVISION)
 4. CONCRETE: 4,500 PSI AT 28 DAYS.
 5. REINFORCING PER ASTM A615 (GRADE 60) #4 BAR @ 6" C-C E.W. TYPICAL
 6. UNIT PRE-ASSEMBLY BY ICAST

Rim: 3.67' Rim to Invert: 2.57' Slack: 0.04" Sump: 13.2" Step Position:

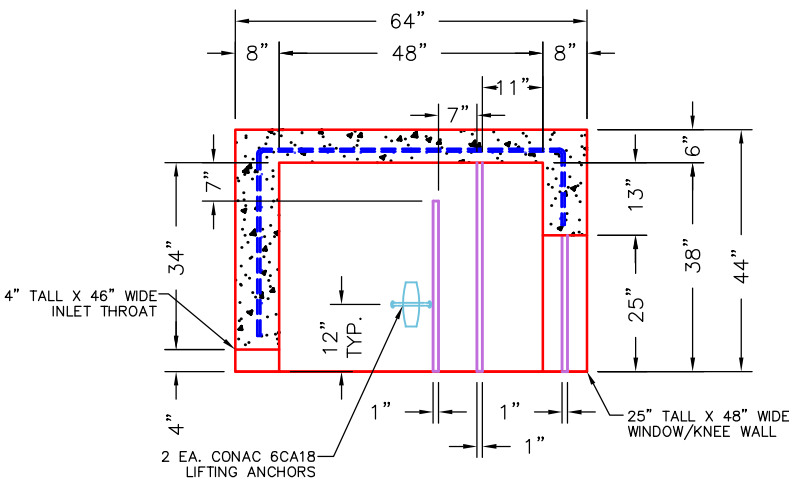
Position	Elev	Angle	Ext. (cw)	Pipe	Pipe OD	Connector	Hole	Horz Size	Up (L)	Offset
Invert 1	1.1'	0°	32"	48" x 25" Weir	48" x 25"	Weir 48"x25"	48" x 25"	48"	13.2"	0"
Invert 2	2.83'	180°	32"	46" x 4" Horiz Slot	46" x 4"	Horiz Slot 46"x4"	46" x 4"	46"	33.96"	0"



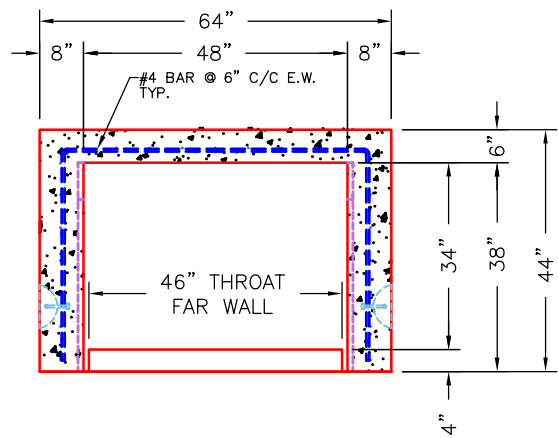
PLAN VIEW

GENERAL NOTES:

1. MANUFACTURED PER ASTM C-913 (LATEST REVISION).
2. CONCRETE F'C: 4,500 PSI AT 28 DAYS.
3. REINFORCING: #4 BAR @ 6" C/C E.W. TYPICAL (GRADE 60).
4. JOINT SEALED WITH CONCRETE SEALANTS CS-102- MEETS ASTM C-990 SPECIFICATIONS (SUPPLIED BY ICAST).



SECTION A-A



SECTION B-B

Coating (Int):
 Coating (Ext):

Seam Up: Flat
 Seam Dn: n/a

Wall Thickness: 8"
 Floor Height: 6"

Height (Int): 38"
 Height (Ext): 44"

Weight (Net): 7741 lb
 Volume (Net): 1.98cu.yd