

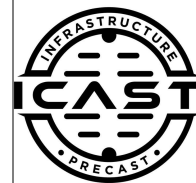
Job Name: 26-1765 ADS Bainbridge Flightline Park
 Job Location: Dayton, OH
 Contractor: ADS Advanced Drainage Systems, Inc.

Plant: Beaver Dam

Tech: S. Felletter

4/13/2026 10:15:18 AM

PC: C. Goff



Structure ID: S3

P3 MH036LD10

MH FLAT TOP w/ 24" Ctr. Hole F/G

- P4) 24" - CASTING HEIGHT - 7"
- P3) 36" - MH FLAT TOP w/ 24" Ctr. Hole F/G - 10"
- P2) 36" - MH RISER T/G - 72"
- P1) 36" - MH BASE Custom Ht T/n - 17"
- 1) JOINT WRAP - 0.065"x6"x50' CONSEAL CS212
- 1) JOINT WRAP PRIMER - CONSEAL CS-75 (1 gal.)
- 1) ASSEMBLY REQUIRED - NO INSTALL
- 1) CASTING - HOE MC-375 F/C Storm
- 2) 36" - Conseal CS-102 1.00" (Double)
- 2) Hole - 16

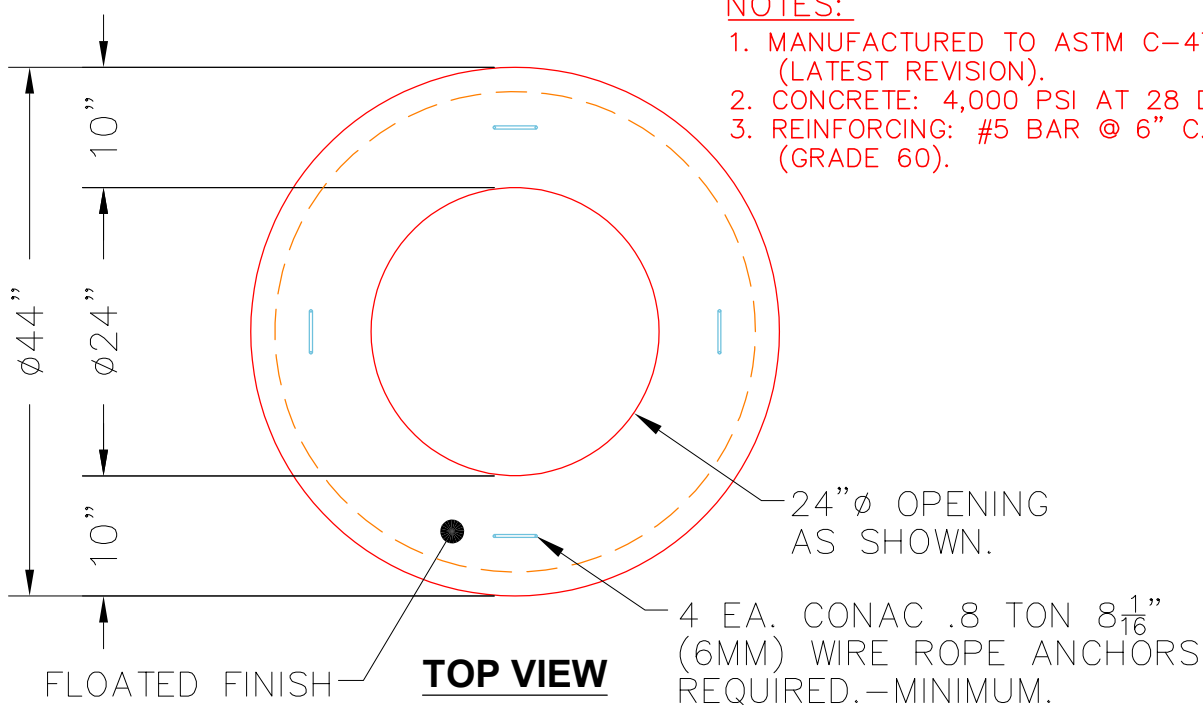
0 lb
 896 lb
 2898 lb
 1483 lb
 0 lb
 0 lb
 0 lb
 271 lb
 0 lb
 0 lb

 Structure Total: 5548 lb

Structure Notes:

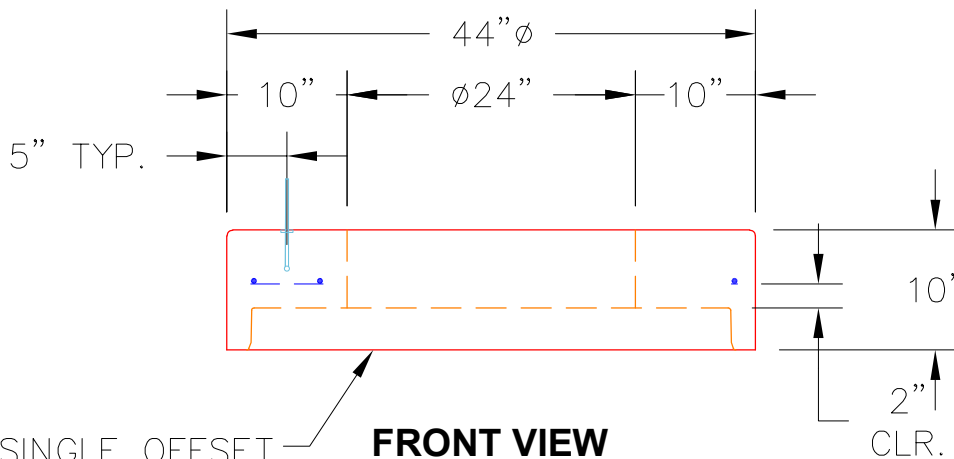
1. PER ASTM C478 SPECIFICATIONS.
2. CONCRETE = 4,000 PSI AT 28 DAYS.
3. CASTING BY ICAST (HOE MC-375 F/C "STORM")
4. LIFTING ANCHORS TO BE INSTALLED ON THE OUTSIDE OF THE STRUCTURE

REINFORCING PER ASTM A615 (GRADE 60).
 - TOP SLAB (As .62) #5 BARS AT 6" C.C.E.W..
 - RISER/WALLS (As .12)
 - FLOOR (As .31) #5 BARS AT 12" C.C.E.W.



NOTES:

1. MANUFACTURED TO ASTM C-478 (LATEST REVISION).
2. CONCRETE: 4,000 PSI AT 28 DAYS.
3. REINFORCING: #5 BAR @ 6" C.C. E.W. (GRADE 60).



STANDARD SINGLE OFFSET GROOVE JOINT REQUIRED

Coating (Int):
 Coating (Ext):

Seam Up: Flat
 Seam Dn: Groove

Wall Thickness: 4"

Height (Ext): 10"

Weight (Net): 896 lb
 Volume (Net): 0.23cu.yd