

Job Name: 26-1720 ADS St. Jude PG4
 Job Location: Memphis, TN
 Contractor: ADS Advanced Drainage Systems, Inc.

Plant: Beaver Dam
 4/16/2026 9:25:46 AM

Tech: S. Felletter
 PC: C. Goff



Structure ID: Storage MH

P6 MH048LD12-30

MH FLAT LID w/30in ECC Hole F/G

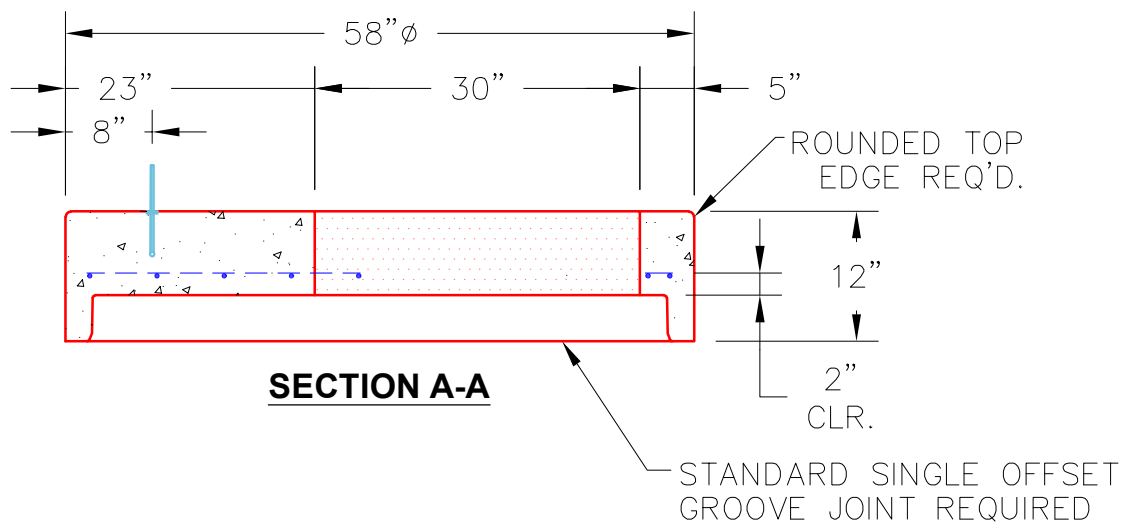
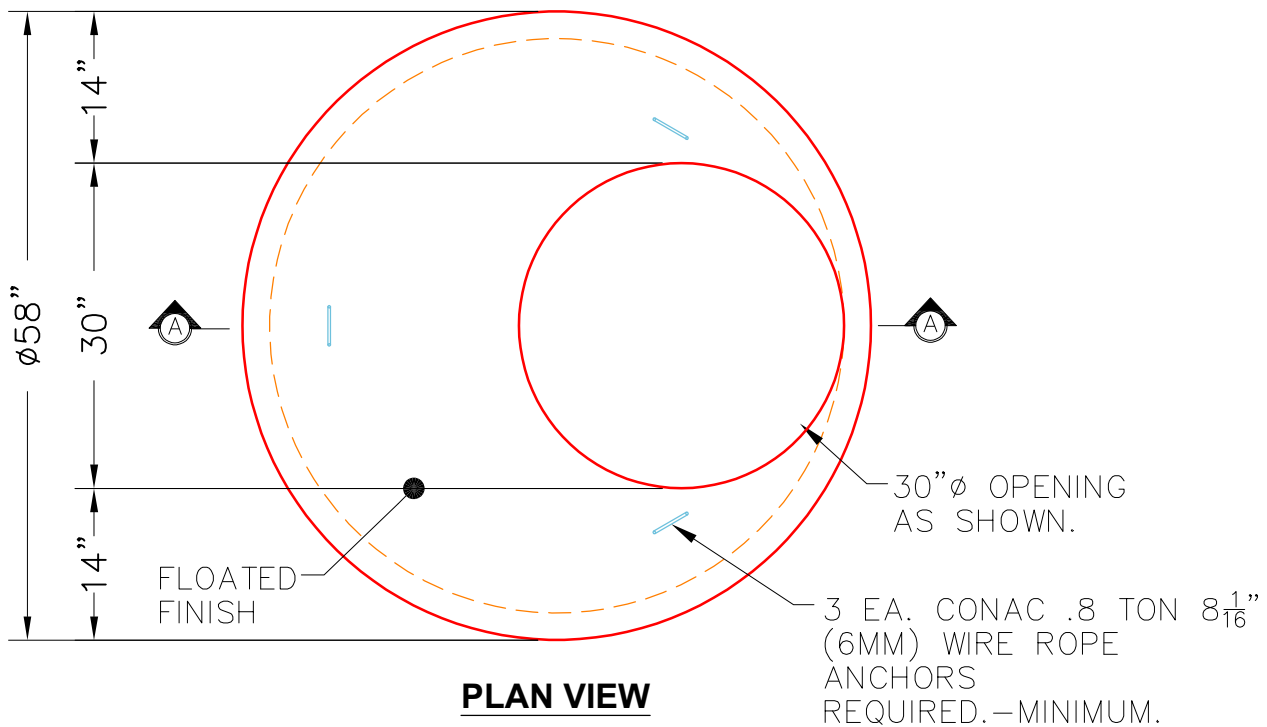
- P7) 30" - CASTING HEIGHT - 6"
- P6) 48" - MH FLAT LID w/30in ECC Hole F/G - 12"
- P5) 48" - MH RISER T/G - 24"
- P4) 48" - MH RISER T/G - 60"
- P3) 48" - MH RISER T/G - 72"
- P2) 48" - MH RISER T/G - 72"
- P1) 48" - MH BASE T/n - 36"
- 1) JOINT WRAP - 0.065"x6"x50' CONSEAL CS212
- 1) JOINT WRAP PRIMER - CONSEAL CS-75 (1 gal.)
- 1) CASTING - HOE MC-680 F/C Plain
- 5) 48" - Conseal CS-102 1.00"
- 2) Z-Lok - C107-6
- 20) MH Step ML-10-TDS-NCR - 10"

0 lb
 1413 lb
 1677 lb
 4192 lb
 5030 lb
 4947 lb
 3845 lb
 0 lb
 0 lb
 659 lb
 0 lb
 2 lb
 0 lb

 Structure Total: 21764 lb

Structure Notes:
 1. PER ASTM C478 SPECIFICATIONS.
 2. CONCRETE = 4,000 PSI AT 28 DAYS.
 3. NO INVERT CHANNEL.
 4. CASTING BY ICAST (HOE MC-680 F/C PLAIN).

 REINFORCING PER ASTM A615 (GRADE 60).
 - TOP SLAB (As .62) #5 BARS AT 6" C.C.E.W.
 - RISER/WALLS (As .12)
 - FLOOR (As .31) #5 BARS AT 12" C.C.E.W.



Coating (Int):
 Coating (Ext):

Seam Up: Flat
 Seam Dn: Groove

Wall Thickness: 5"

Height (Ext): 12"

Weight (Net): 1413 lb
 Volume (Net): 0.36cu.yd