

Job Name: 26-1690 ADS Newton Pike Hampton Inn  
 Job Location: Lexington, KY  
 Contractor: ADS Advanced Drainage Systems, Inc.

Plant: Beaver Dam

Tech: S. Felletter

4/2/2026 1:33:08 PM

PC: C. Goff



**Structure ID: 2**

**P4 MH096LD17-CON**

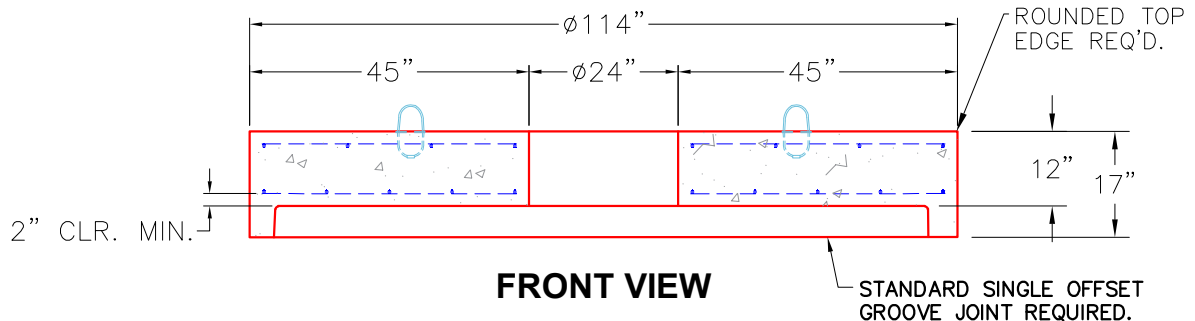
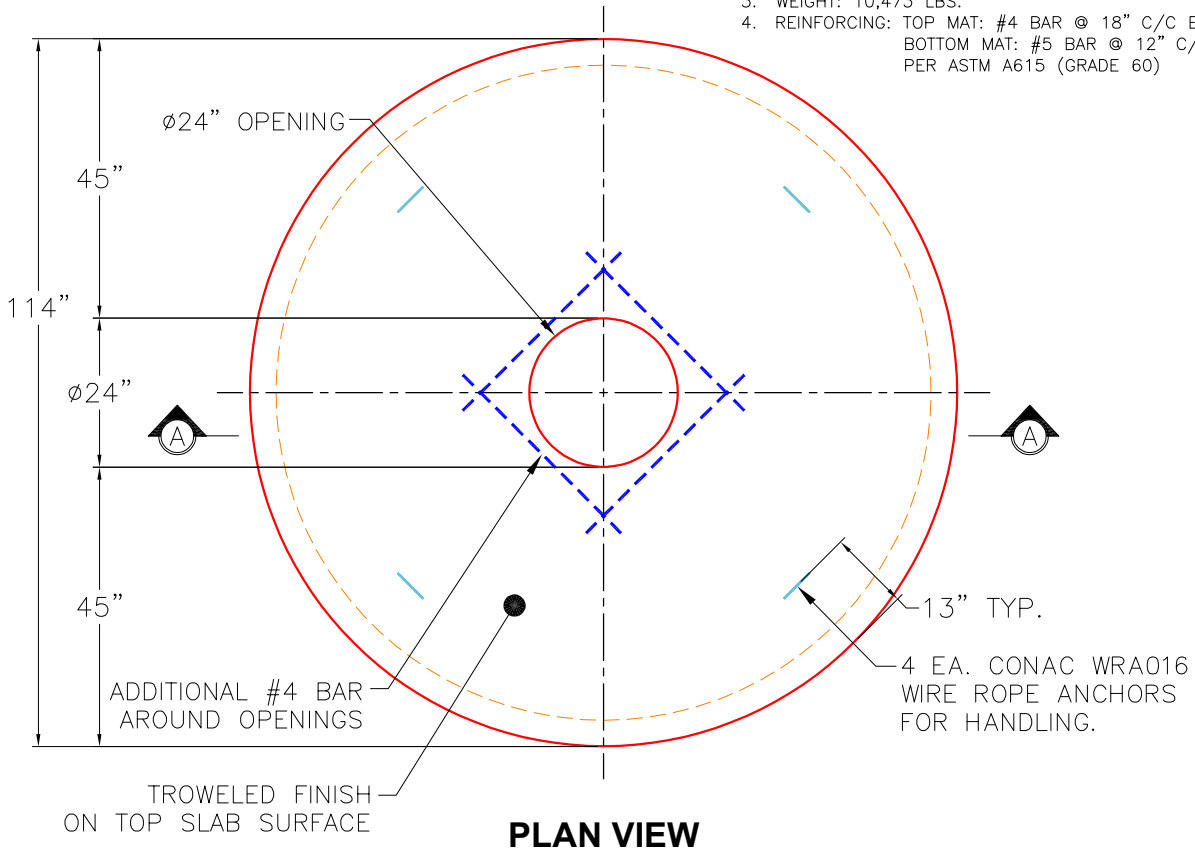
**MH FLAT TOP w/ 24" Conc. Hole**

- P6) 24" - CASTING HEIGHT - 7"
- P5) 24" - GRADE RING - 4"
- P4) 96" - MH FLAT TOP w/ 24" Conc. Hole - 17"
- P3) 96" - MH RISER - 96"
- P2) 96" - MH RISER - 90"
- P1) 96" - MH BASE - 24"
- 1) ASSEMBLY REQUIRED - BRACKETS ONLY
- 1) SECONDARY POUR - Floor
- 1) CASTING - HOE MC-375 F/C Storm
- 3) 96" - Conseal CS-102 1.00"
- 2) Hole - 32

0 lb	<b>Structure Notes:</b>
270 lb	1. PER ASTM C478 SPECIFICATIONS.
10473 lb	2. CONCRETE = 4,000 PSI AT 28 DAYS.
22680 lb	3. CASTING BY ICCAST (MC-375 F/C "STORM").
22421 lb	4. ASSEMBLY REQUIRED - BRACKETS ONLY.
12831 lb	
0 lb	
0 lb	REINFORCING PER ASTM A615 (GRADE 60).
271 lb	- TOP SLAB - AS SHOWN BELOW
0 lb	
0 lb	
0 lb	
-----	
Structure Total:	68945 lb

GENERAL NOTES:

1. MANUFACTURED TO ASTM C-478 (LATEST REVISION).
2. CONCRETE 5,000 PSI AT 28 DAYS.
3. WEIGHT: 10,473 LBS.
4. REINFORCING: TOP MAT: #4 BAR @ 18" C/C E.W.  
 BOTTOM MAT: #5 BAR @ 12" C/C E.W.  
 PER ASTM A615 (GRADE 60)



Coating (Int):	Seam Up: Flat	Wall Thickness: 9"	Height (Ext): 17"	Weight (Net): 10473 lb
Coating (Ext):	Seam Dn: Groove			Volume (Net): 2.68cu.yd