

Job Name: 26-1690 ADS Newton Pike Hampton Inn
 Job Location: Lexington, KY
 Contractor: ADS Advanced Drainage Systems, Inc.

Plant: Beaver Dam

Tech: S. Felletter

4/2/2026 1:32:50 PM

PC: C. Goff



Structure ID: 2

P1 MH096BA24

MH BASE

- P6) 24" - CASTING HEIGHT - 7"
- P5) 24" - GRADE RING - 4"
- P4) 96" - MH FLAT TOP w/ 24" Conc. Hole - 17"
- P3) 96" - MH RISER - 96"
- P2) 96" - MH RISER - 90"
- P1) 96" - MH BASE - 24"
- 1) ASSEMBLY REQUIRED - BRACKETS ONLY
- 1) SECONDARY POUR - Floor
- 1) CASTING - HOE MC-375 F/C Storm
- 3) 96" - Conseal CS-102 1.00"
- 2) Hole - 32

- Structure Notes:**
1. PER ASTM C478 SPECIFICATIONS.
 2. CONCRETE = 4,000 PSI AT 28 DAYS.
 3. CASTING BY ICCAST (MC-375 F/C "STORM").
 4. ASSEMBLY REQUIRED - BRACKETS ONLY.
- REINFORCING PER ASTM A615 (GRADE 60).
 - RISER/WALLS (As .24).
 - FLOOR (As .62) #5 BARS AT 8" C.C.E.W.

0 lb
 270 lb
 10473 lb
 22680 lb
 22421 lb
 12831 lb
 0 lb
 0 lb
 271 lb
 0 lb
 0 lb

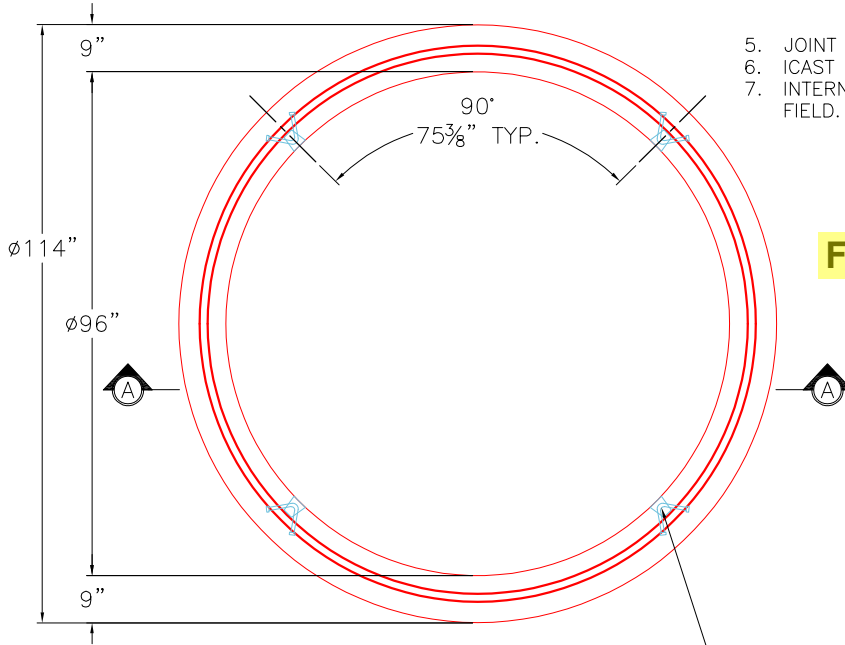
 Structure Total: 68945 lb

Structure Total: 68945 lb

Rim: 926.62' Rim to Invert: 8.71' Slack: 0.56" Sump: 134.04" Step Position:

GENERAL NOTES:

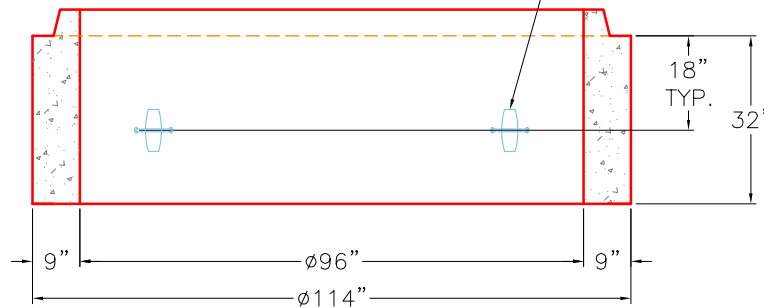
1. MANUFACTURED TO ASTM C-478 (LATEST REVISION).
2. CONCRETE 5,000 PSI AT 28 DAYS.
3. REINFORCING: WALLS - WWF AREA 0.24
 FLOOR - AREA 0.62 - #5 BAR @ 8" C/C.
4. WEIGHT: TOTAL - 12,831 LBS.
 FIRST POUR - 5,979 LBS
 SECOND POUR - 6,852 LBS
5. JOINT SEAL: CONCRETE SEALANTS INC. CS-102.
6. ICCAST TO INSTALL INTERNAL BRACKETS
7. INTERNAL COMPONENTS TO BE INSTALLED IN THE FIELD.



FIRST POUR DRAWING

TOP VIEW

4 EA. CONAC 6CA14 ANCHORS REQUIRED FOR HANDLING.



SECTION A-A

Coating (Int):
 Coating (Ext):

Seam Up: Tongue
 Seam Dn: Flat

Wall Thickness: 9"
 Floor Height: 8"

Height (Int): 24"
 Height (Ext): 32"

Weight (Net): 12831 lb
 Volume (Net): 3.28cu.yd

Job Name: 26-1690 ADS Newton Pike Hampton Inn
 Job Location: Lexington, KY
 Contractor: ADS Advanced Drainage Systems, Inc.

Plant: Beaver Dam

Tech: S. Felletter

4/2/2026 1:32:50 PM

PC: C. Goff



Structure ID: 2

P1 MH096BA24

MH BASE

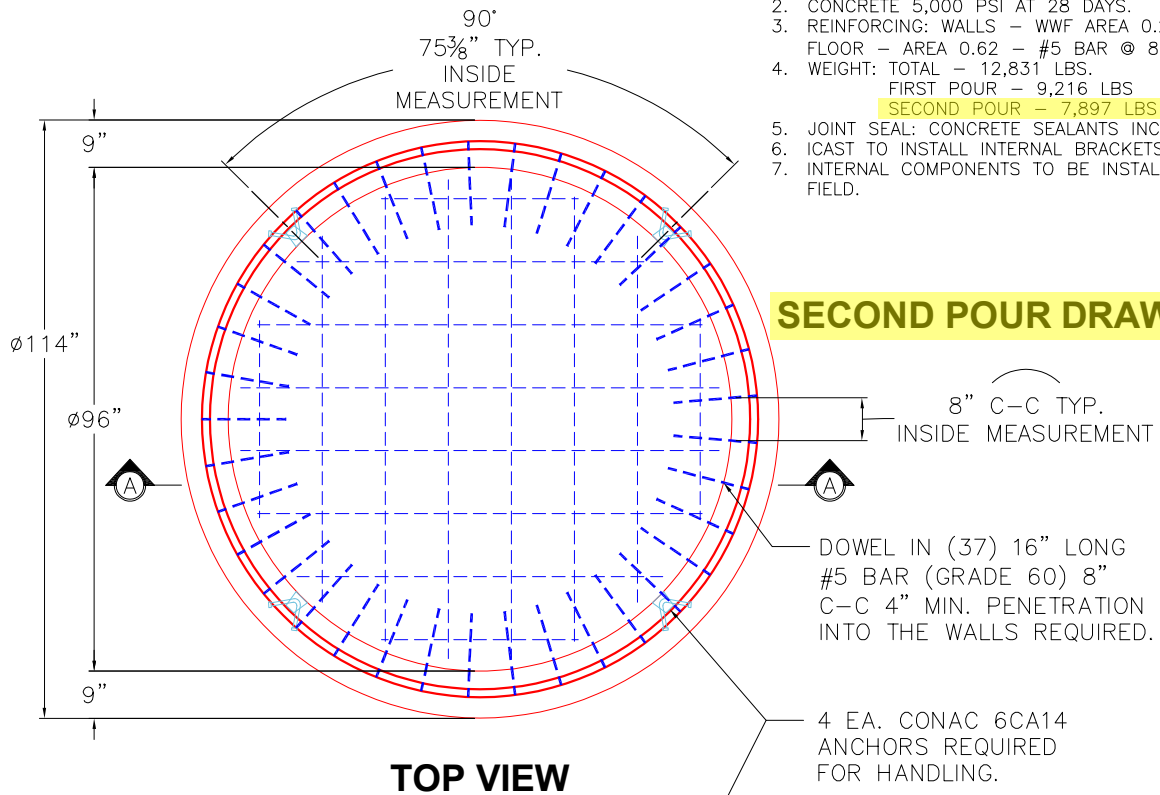
- P6) 24" - CASTING HEIGHT - 7"
- P5) 24" - GRADE RING - 4"
- P4) 96" - MH FLAT TOP w/ 24" Conc. Hole - 17"
- P3) 96" - MH RISER - 96"
- P2) 96" - MH RISER - 90"
- P1) 96" - MH BASE - 24"
- 1) ASSEMBLY REQUIRED - BRACKETS ONLY
- 1) SECONDARY POUR - Floor
- 1) CASTING - HOE MC-375 F/C Storm
- 3) 96" - Conseal CS-102 1.00"
- 2) Hole - 32

- Structure Notes:**
1. PER ASTM C478 SPECIFICATIONS.
 2. CONCRETE = 4,000 PSI AT 28 DAYS.
 3. CASTING BY ICCAST (MC-375 F/C "STORM").
 4. ASSEMBLY REQUIRED - BRACKETS ONLY.
- 0 lb
 270 lb
 10473 lb
 22680 lb
 22421 lb
 12831 lb
- 0 lb
 0 lb
 271 lb
 0 lb
 0 lb
- REINFORCING PER ASTM A615 (GRADE 60).
 - RISER/WALLS (As .24).
 - FLOOR (As .62) #5 BARS AT 8" C.C.E.W.
- Structure Total: 68945 lb

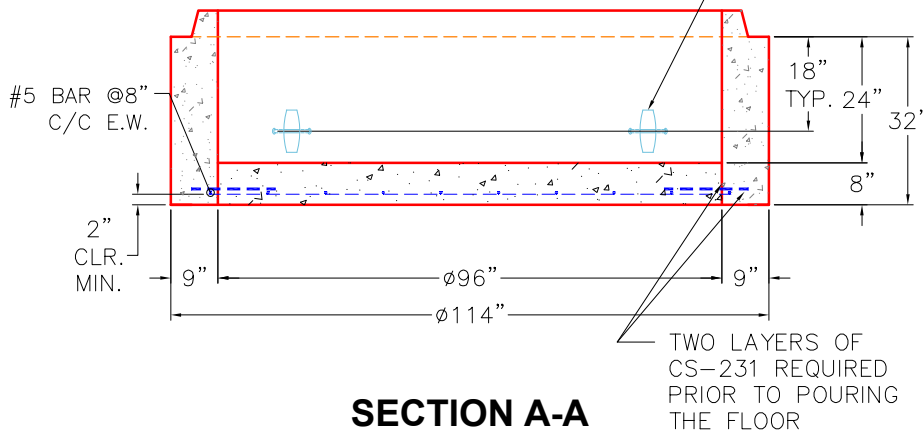
Rim: 926.62' Rim to Invert: 8.71' Slack: 0.56" Sump: 134.04" Step Position:

GENERAL NOTES:

1. MANUFACTURED TO ASTM C-478 (LATEST REVISION).
2. CONCRETE 5,000 PSI AT 28 DAYS.
3. REINFORCING: WALLS - WWF AREA 0.24
 FLOOR - AREA 0.62 - #5 BAR @ 8" C/C.
4. WEIGHT: TOTAL - 12,831 LBS.
 FIRST POUR - 9,216 LBS
SECOND POUR - 7,897 LBS
5. JOINT SEAL: CONCRETE SEALANTS INC. CS-102.
6. ICCAST TO INSTALL INTERNAL BRACKETS.
7. INTERNAL COMPONENTS TO BE INSTALLED IN THE FIELD.



SECOND POUR DRAWING



Coating (Int): Coating (Ext):	Seam Up: Tongue Seam Dn: Flat	Wall Thickness: 9" Floor Height: 8"	Height (Int): 24" Height (Ext): 32"	Weight (Net): 12831 lb Volume (Net): 3.28cu.yd
----------------------------------	----------------------------------	--	--	---