

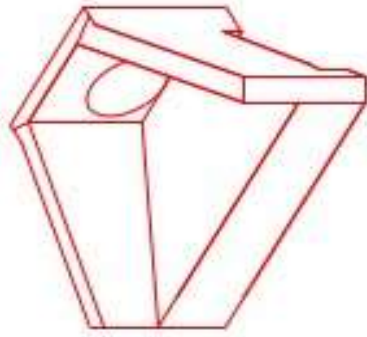


Structure ID: 2 HW

P1 HWPC60

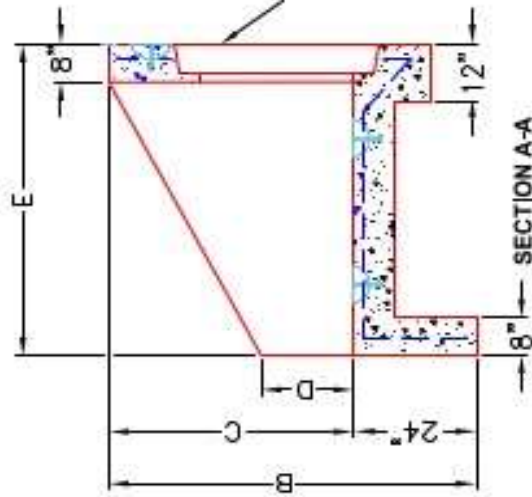
60" - PIPE CULVERT HEADWALL F/F

DIMENSIONS									
PIPE #	A	B	C	D	E	F	G	H	WEIGHT
3"	1'-4"	1'-4"	1'-4"	1'-4"	5'-0"	1'-8"	1'-8"	3'-4"	620 lbs.
3"	1'-4"	1'-4"	1'-4"	1'-4"	5'-0"	1'-8"	1'-8"	3'-4"	620 lbs.
4"	1'-4"	1'-4"	1'-4"	1'-4"	5'-0"	1'-8"	1'-8"	3'-4"	1,233 lbs.
4"	1'-4"	1'-4"	1'-4"	1'-4"	5'-0"	1'-8"	1'-8"	3'-4"	1,233 lbs.
5"	1'-4"	1'-4"	1'-4"	1'-4"	5'-0"	1'-8"	1'-8"	3'-4"	1,427 lbs.
5"	1'-4"	1'-4"	1'-4"	1'-4"	5'-0"	1'-8"	1'-8"	3'-4"	1,427 lbs.
6"	1'-4"	1'-4"	1'-4"	1'-4"	5'-0"	1'-8"	1'-8"	3'-4"	1,427 lbs.

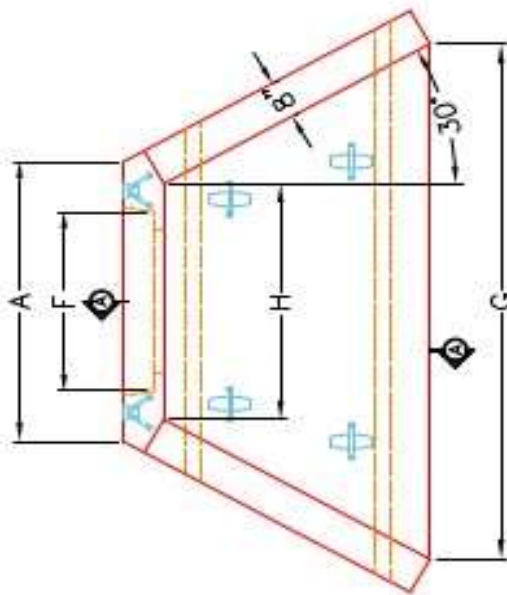


ISOMETRIC VIEW

STEPPED HOLE FORMER FOR CORRESPONDING PIPE Ø.
 (PIPE O.D. + 3"-4")

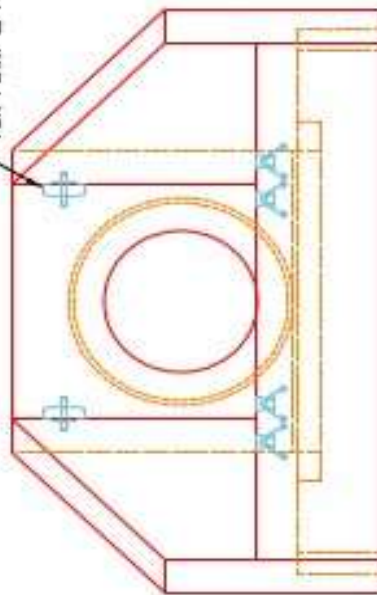


SECTION A-A



PLAN VIEW

"A"-ANCHOR LIFTING SYSTEM FOR PLANT & FIELD HANDLING.



FRONT ELEVATION

APPROVED FOR DESIGN ONLY

BY: _____ DATE: 1/20/2021 9:50 am

APPROVED: _____ INSTRUCTION

ICAST INFRASTRUCTURE PRECAST

ICAST INFRASTRUCTURE PRECAST, INC.
 601 WEST 7TH ST., MANASSAS, VA 20108
 PHONE: (703) 336-2266, FAX: (703) 336-1168

KYTC 30" - 60" PIPE CULVERT HEADWALL

DRAWING NO.: RFDH-PC-118 DATE: 12-14-20
 CHECKED BY: J.L. ROSS, PE DRAWN BY: N. ROUGH
 WEB: WWW.ICAST.COM SCALE: NFE

NOTES:

1. CONCRETE: KYTC APPROVED.
2. REINFORCING: #5 BAR @ 12" C/C E.W. - GRADE 60, (WITH 2" CONCRETE COVER MINIMUM)
3. REINFORCING BARS TO BE TACK WELDED OR TIED.
4. PIPE AND LIFTING ANCHOR POCKETS TO BE GROUTED WITH KYTC APPROVED NON-SHRINK GROUT.
5. DRAWING TO BE USED IN CONJUNCTION WITH KYTC STD. DRAWING RDH-110-02, RDH-210-03 AND THE STANDARD SPECIFICATIONS FOR ROAD AND BRIDGE CONSTRUCTION.
6. 3" CHAMFER ON ALL EXPOSED EDGES.
7. PREFORMED STEPPED HOLE SIZED AS PER O.D. OF PIPE + 3"-4".