

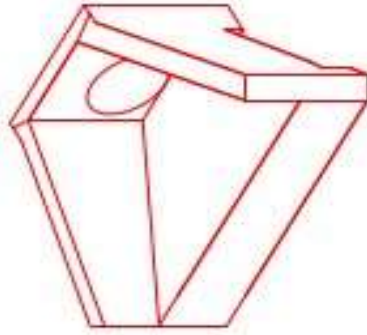


Structure ID: 1 HW

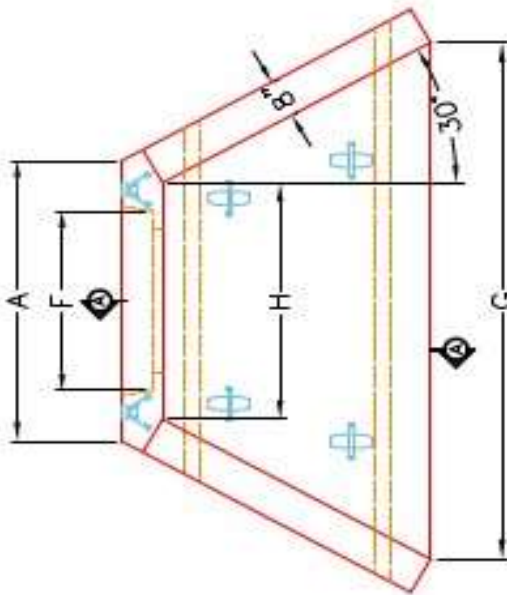
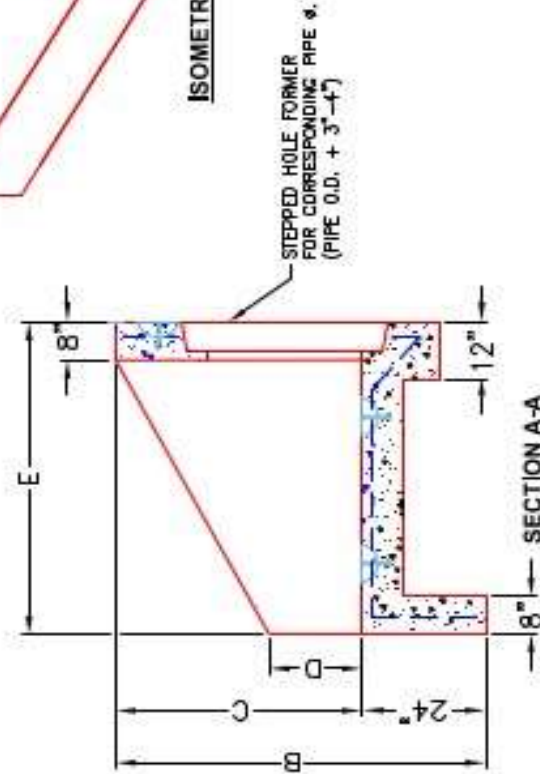
P1 HWPC48

48" - PIPE CULVERT HEADWALL F/F

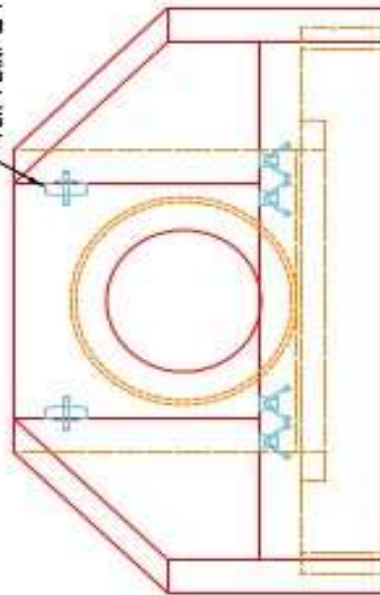
DIMENSIONS								WEIGHT	
PIE #	A	B	C	D	E	F	G	H	
3'	4'-0"	6'-0"	4'-0"	1'-0"	5'-0"	3'-0"	1'-0"	3'-0"	6,820 lbs.
3'	4'-0"	6'-0"	4'-0"	1'-0"	5'-0"	4'-0"	1'-0"	3'-0"	6,820 lbs.
4'	6'-0"	6'-0"	5'-0"	2'-0"	6'-0"	4'-0"	1'-0"	4'-0"	13,233 lbs.
4'	6'-0"	6'-0"	5'-0"	2'-0"	6'-0"	5'-0"	1'-0"	4'-0"	13,233 lbs.
5'	7'-0"	7'-0"	6'-0"	2'-0"	7'-0"	5'-0"	1'-0"	6'-0"	18,427 lbs.
6'	7'-0"	7'-0"	6'-0"	2'-0"	7'-0"	6'-0"	1'-0"	6'-0"	18,427 lbs.



ISOMETRIC VIEW



"A"-ANCHOR LIFTING SYSTEM FOR PLANT & FIELD HANDLING.



NOTES:

1. CONCRETE: KYTC APPROVED.
2. REINFORCING: #5 BAR @ 12" C/C E.W.-GRADE 60, (WITH 2" CONCRETE COVER MINIMUM)
3. REINFORCING BARS TO BE TACK WELDED OR TIED.
4. PIPE AND LIFTING ANCHOR POCKETS TO BE GROUTED WITH KYTC APPROVED NON-SHRINK GROUT.
5. DRAWING TO BE USED IN CONJUNCTION WITH KYTC STD. DRAWING RDH-110-02, RDH-210-03 AND THE STANDARD SPECIFICATIONS FOR ROAD AND BRIDGE CONSTRUCTION.
6. 3/4" CHAMFER ON ALL EXPOSED EDGES.
7. PREFORMED STEPPED HOLE SIZED AS PER O.D. OF PIPE + 3" - 4".

APPROVED FOR DESIGN ONLY

APPROVED
 AS PER SPECIFICATION 1012
 KYTC DIV. OF CONSTRUCTION
 DATE: 1/20/2021 9:50 am
 INSTRUCTION



INFRASTRUCTURE PRECAST, INC.
 401 WENTZ RD., WINDYBROOK, KY, 40380
 PHONE: 502-228-2288, FAX: 502-228-2488

KYTC 30" - 80" PIPE CULVERT HEADWALL

DESIGNED BY: J.H. DAVIS, P.E. DATE: 12-14-20
 DRAWN BY: K. RICHARDS
 WWW.ICASTINC.COM SCALE: 1/8"