

Job Name: 26-1644 - BGMU Miox Feed Lines  
 Job Location: Bowling Green, KY  
 Contractor: Scott & Ritter, Inc.

Plant: 100  
 3/26/2026 1:36:51 PM

Tech: Jared - F  
 PC: C. Goff

**Structure ID: JB-2-2 ST-JB**

**P3 MH072LD12SP**

**MH FLAT TOP w/ 36" CASTING CAST IN F/F**

- P3) 72" - MH FLAT TOP w/ 36" CASTING CAST IN F/F - 12"
- P2) 72" - MH RISER F/F - 66"
- P1) 72" - P.I.P. BY OTHERS - BTM SLAB F/n - 0"
- 1) CASTING - PAMREX 36" F/C
- 2) 72" - Conseal CS-102 1.00"
- 1) 36" - Conseal CS-102 1.00"
- 2) SQ. Hole n/n - 48"x36.5"

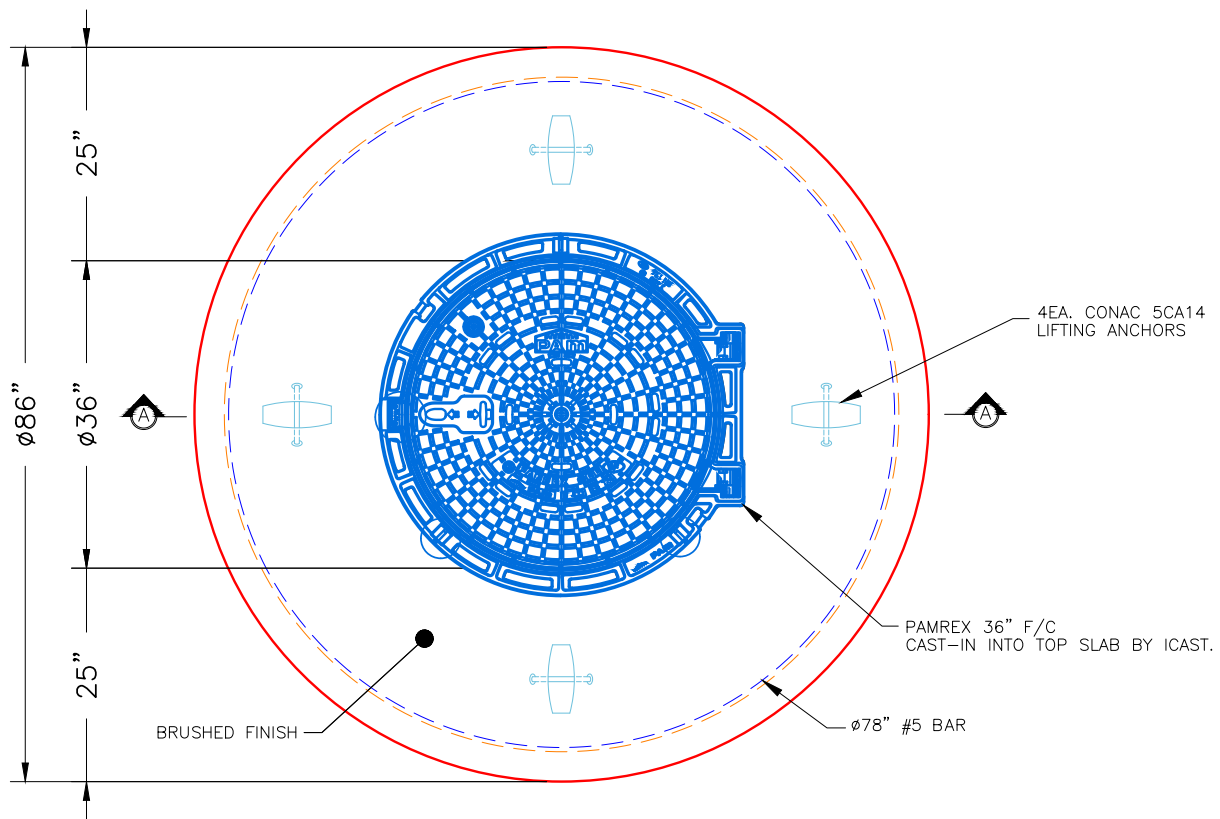
4824 lb  
 7403 lb  
 0 lb  
 393 lb  
 0 lb  
 0 lb  
 0 lb

Structure Total: 12620 lb

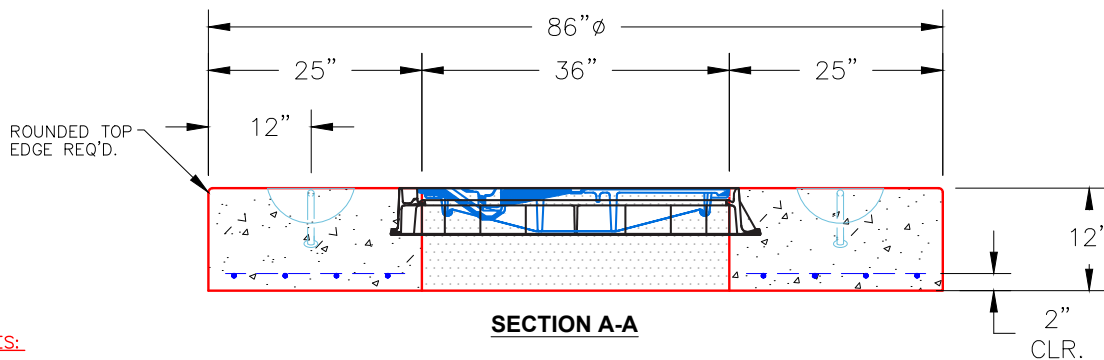
Structure Notes:

1. PER ASTM C478 SPECIFICATIONS.
2. CONCRETE = 4,000 PSI AT 28 DAYS.
3. NO STEPS AND NO INVERT CHANNEL.
4. CASTING BY ICAS (PAMREX 36" F/C)

REINFORCING PER ASTM A615 (GRADE 60).  
 - TOP SLAB (As .62) #5 BARS AT 6" C.C.E.W.  
 - RISER (As .18)



**PLAN VIEW**



**SECTION A-A**

NOTES:

1. MANUFACTURED TO ASTM C-478 (LATEST REVISION).
2. CONCRETE: 4,000 PSI AT 28 DAYS.
3. REINFORCING: #5 BAR @ 6" O.C. E.W. (GRADE 60).

Coating (Int):  
 Coating (Ext):

Seam Up: Flat  
 Seam Dn: Flat

Wall Thickness: 7"

Height (Ext): 12"

Weight (Net): 4824 lb  
 Volume (Net): 1.23cu.yd