

Job Name: 26-1644 - BGMU Miox Feed Lines
 Job Location: Bowling Green, KY
 Contractor: Scott & Ritter, Inc.

Plant: 100

Tech: Jared - F

3/27/2026 6:52:31 PM

PC: C. Goff

Structure ID: JB #4

P1 CTS

72IN X 72IN OD FLAT TOP SPEC. (w/ CASTING CAST IN) F/F

P2) 36" - CASTING (cast in) - 0"
 P1) 72" x 72" - 72IN X 72IN OD FLAT TOP SPEC. (w/ CASTING CAST IN) F/F - 12"
 1) CASTING - PAMREX 36" F/C
 1) 36" - Conseal CS-102 1.00"

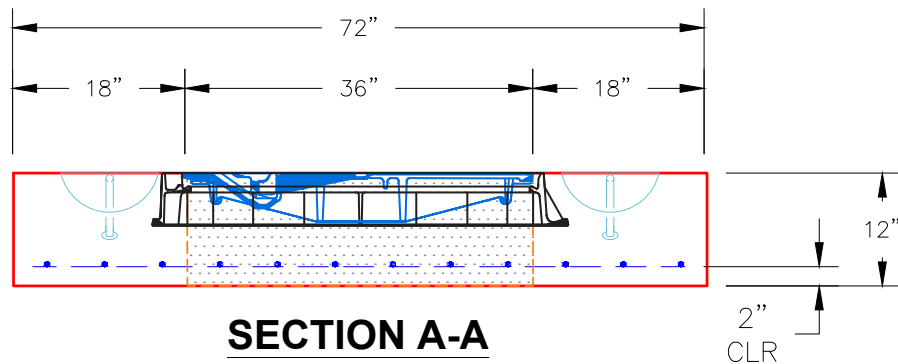
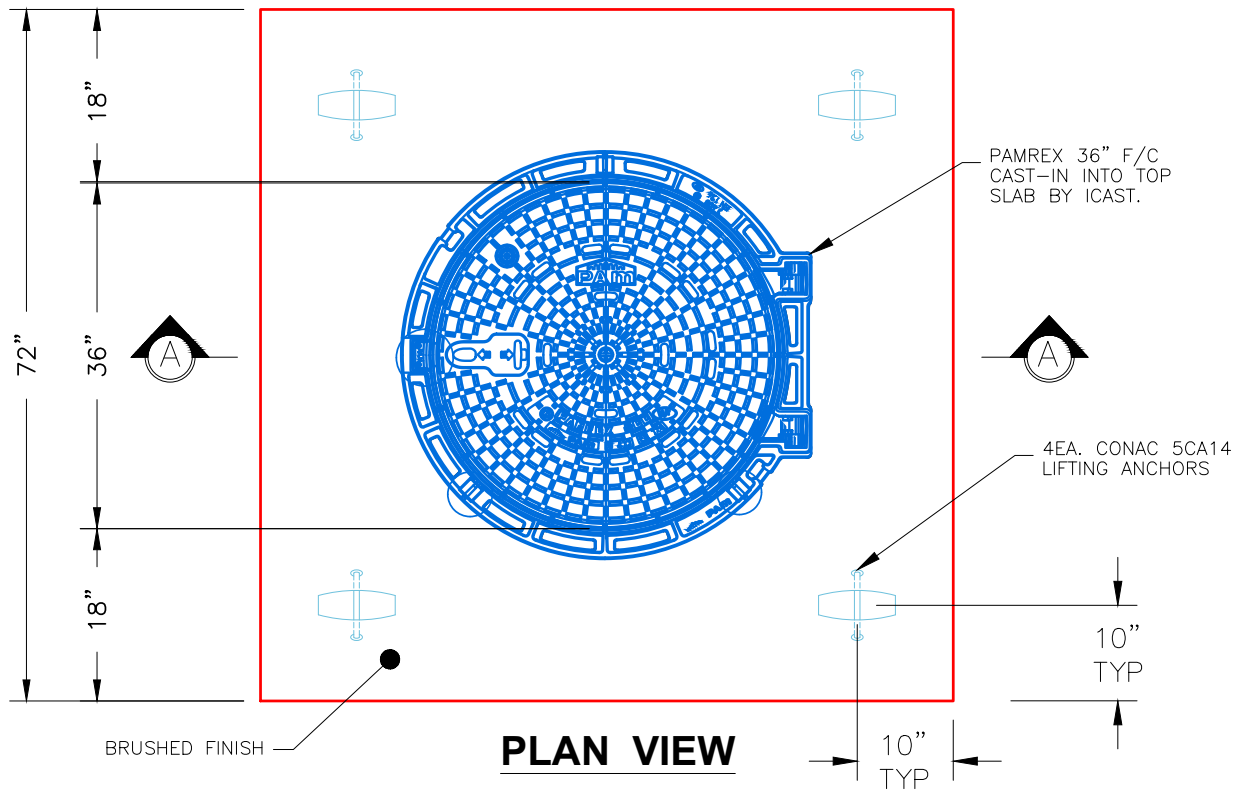
0 lb
 4197 lb
 393 lb
 0 lb

 Structure Total: 4590 lb

Structure Notes:

- PER ASTM C913 SPECIFICATIONS.
- CONCRETE = 4,000 PSI AT 28 DAYS.
- NO STEPS & NO INVERT CHANNEL.
- CASTING BY ICAST (PAMREX 36" F/C)

REINFORCING PER ASTM A615 (GRADE 60).
 - TOP SLAB (As .62) #5 BARS AT 6" C.C.E.W..



NOTES:

- MANUFACTURED TO ASTM C-913 (LATEST REVISION).
- CONCRETE: 4,000 PSI AT 28 DAYS.
- REINFORCING: #5 BAR @ 6" O.C. E.W. (GRADE 60).

Coating (Int):
 Coating (Ext):

Seam Up: Flat
 Seam Dn: Flat

Wall Thickness: 0"

Height (Ext): 12"

Weight (Net): 4197 lb
 Volume (Net): 1.07cu.yd