

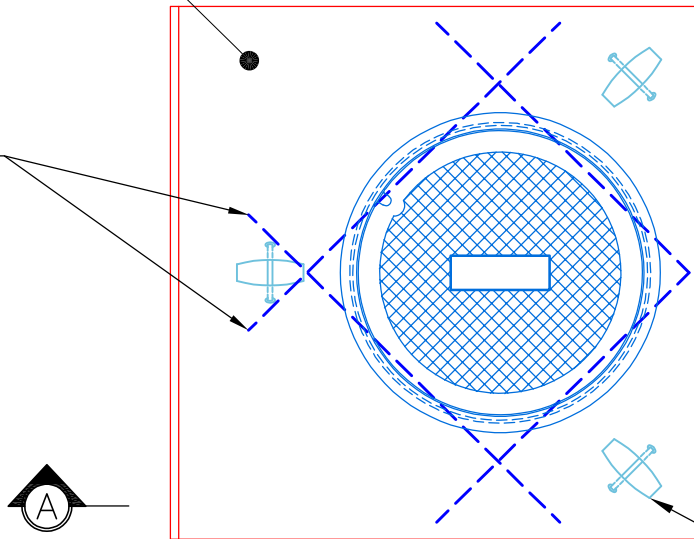
LIGHT BRUSH FINISH

EXTRA #4 BAR  
DIAGONALS TIED  
AROUND 32 1/2" Ø  
CLEAR OPENING.

GENERAL NOTES:

1. MANUFACTURED PER ASTM C-913 (LATEST REVISION).
2. CONCRETE F'C: 4,500 PSI AT 28 DAYS.
3. REINFORCING: #4 BAR @ 6" C/C E.W. TYPICAL (GRADE 60).
4. JOINT SEALED WITH CONCRETE SEALANTS CS-102.  
MEETS ASTM C-990 SPECIFICATIONS (SUPPLIED BY ICAST).
5. J.R. HOE MCS-455 FRAME & SOLID "STORM" COVER  
CAST OFFSET INTO TOP SLAB (SUPPLIED BY ICAST).
6. CONCRETE WEIGHTS: 38" TALL BASE = 6,900 LBS.  
6" TOP SLAB = 1,650 LBS.

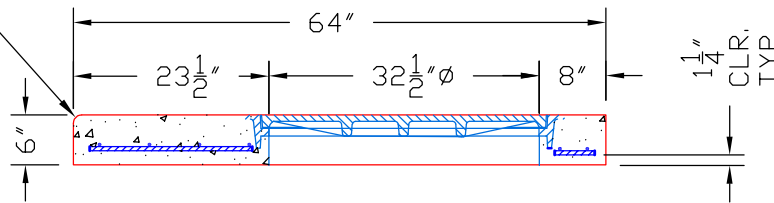
Quantity 9



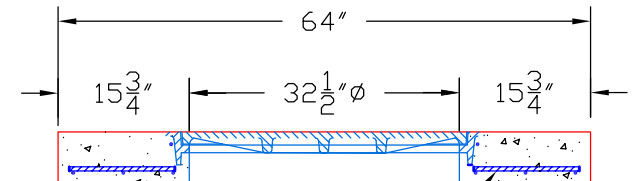
**TOP VIEW**

3 EA. CONAC 5CA18 RECESSED  
UTILITY ANCHORS CAST IN  
OUTSIDE WALL FOR HANDLING.

STREET SIDE TOP EDGE  
OF SLAB TO RECEIVE A  
1" RADIUSED (BULL NOSE)



**SECTION A-A**



#4 BAR @ 6" C/C E.W.  
(TYPICAL FOR TOP SLAB)

**SECTION B-B**

PRODUCTION WORK ORDER

PRODUCT I.D.: BX048048-08LD06S

DESCRIPTION: CURB INLET TOP SLAB 4' X 4' X 6" THK.



QUALITY CONTROL CHECKLIST

- ALL DIMENSIONS CORRECT.
- LIFTERS INSTALLED.
- OPENING CENTERED.
- REINFORCING CORRECT.
- SURFACE QUALITY ACCEPTABLE.
- EDGES CHAMFERED.
- ALL PATCHWORK ACCEPTABLE.

PRODUCT VIEW: RIGHT SIDE UP

CUSTOMER: CONVERGENT WATER TECHNOLOGIES

PLANT: BEAVER DAM, KY.

PROJECT: CONVERGENT CURB BOXES

WEIGHT: 1,650 LBS.

STRUCTURE I.D.: 2

TOP SECTION JOINT: N/A

SALES ORDER NO.: 26-1639

BASE SECTION JOINT: N/A

P.C.: J.H. ROSS, PE

DRAWING: S. FELLETER

QC CHECK INITIALS:

DATE: 03/12/26

SCALE: NTS

PG. 1 of 1