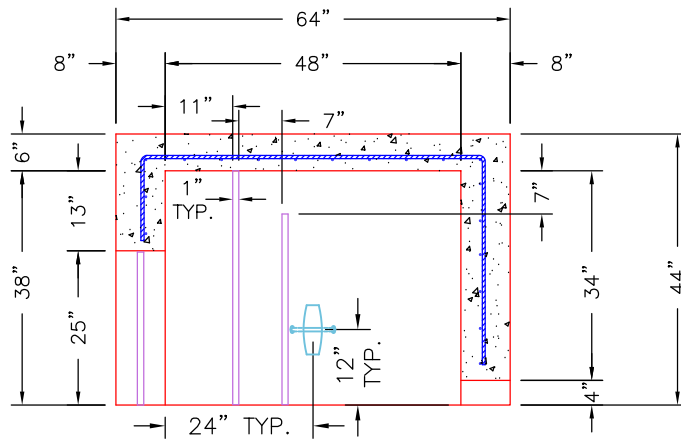


GENERAL NOTES:

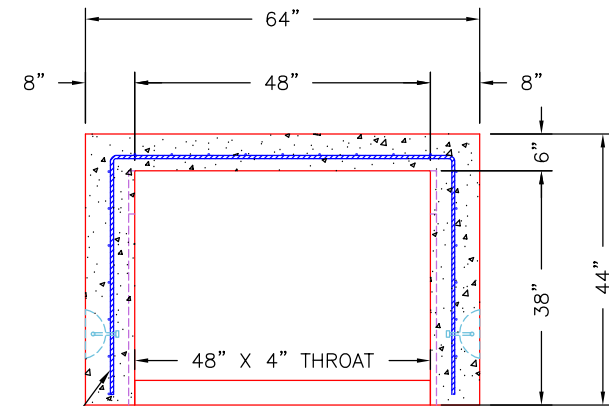
1. MANUFACTURED PER ASTM C-913 (LATEST REVISION).
2. CONCRETE F'C: 4,500 PSI AT 28 DAYS.
3. REINFORCING: #4 BAR @ 6" C/C E.W. TYPICAL (GRADE 60).
4. JOINT SEALED WITH CONCRETE SEALANTS CS-102. MEETS ASTM C-990 SPECIFICATIONS. (SUPPLIED BY ICAST).
5. J.R. HOE MCS-455 FRAME & SOLID "STORM" COVER CAST OFFSET INTO TOP SLAB (SUPPLIED BY ICAST).
6. CONCRETE WEIGHTS: 38" TALL BASE = 6,900 LBS.
6" TOP SLAB = 1,650 LBS.
7. BASE SLAB MUST BE FINISHED DOWN 2" FROM 8" TO 6" IN FORM

Quantity 9




SECTION A-A

#4 BAR @ 6" C/C E.W.
(TYPICAL FOR WALLS & FLOOR)



SECTION B-B

		PRODUCTION WORK ORDER QUALITY CONTROL CHECKLIST <input type="checkbox"/> ALL DIMENSIONS CORRECT. <input type="checkbox"/> LIFTERS INSTALLED. <input type="checkbox"/> OPENING CENTERED. <input type="checkbox"/> REINFORCING CORRECT. <input type="checkbox"/> SURFACE QUALITY ACCEPTABLE. <input type="checkbox"/> EDGES CHAMFERED. <input type="checkbox"/> ALL PATCHWORK ACCEPTABLE.	PRODUCT I.D.: BX4848-08BAVF PRODUCT VIEW: UPSIDE DOWN PLANT: BEAVER DAM, KY. WEIGHT: 6,900 TOP SECTION JOINT: N/A BASE SECTION JOINT: N/A QC CHECK INITIALS:	DESCRIPTION: 48" X 48" X 38" TALL PRETX CURB INLET CUSTOMER: CONVERGENT WATER TECHNOLOGIES PROJECT: CONVERGENT CURB BOXES STRUCTURE I.D.: 2 SALES ORDER NO.: 26-1639 P.C.: J.H. ROSS, PE DRAWING: S. FELLETTA DATE: 03/12/26 SCALE: NTS PG. 1 of 1
---	--	--	---	---