

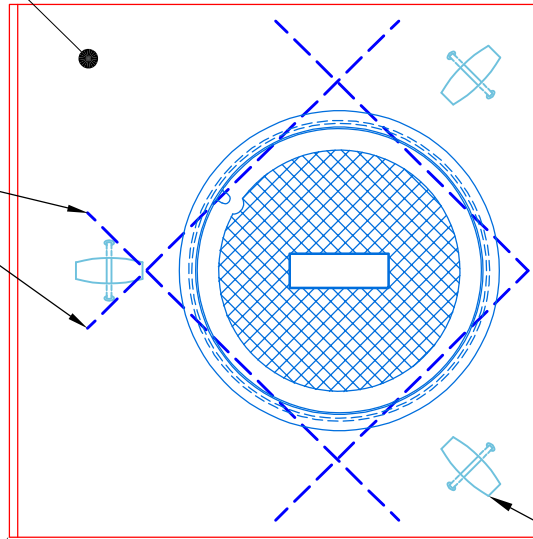
LIGHT BRUSH FINISH

EXTRA #4 BAR  
DIAGONALS TIED  
AROUND 32 1/2" Ø  
CLEAR OPENING.

GENERAL NOTES:

1. MANUFACTURED PER ASTM C-913 (LATEST REVISION).
2. CONCRETE F'C: 4,500 PSI AT 28 DAYS.
3. REINFORCING: #4 BAR @ 6" C/C E.W. TYPICAL (GRADE 60).
4. JOINT SEALED WITH CONCRETE SEALANTS CS-102.  
MEETS ASTM C-990 SPECIFICATIONS (SUPPLIED BY ICAST).
5. J.R. HOE MCS-455 FRAME & SOLID "STORM" COVER  
CAST OFFSET INTO TOP SLAB (SUPPLIED BY ICAST).
6. CONCRETE WEIGHTS: 38" TALL BASE = 6,900 LBS.  
6" TOP SLAB = 1,650 LBS.

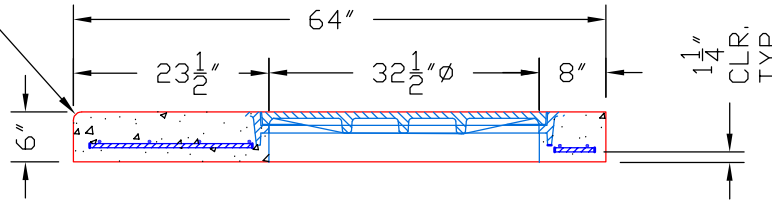
Quantity 9



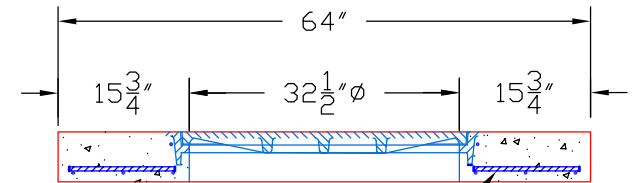
**TOP VIEW**

3 EA. CONAC 5CA18 RECESSED  
UTILITY ANCHORS CAST IN  
OUTSIDE WALL FOR HANDLING.


STREET SIDE TOP EDGE  
OF SLAB TO RECEIVE A  
1" RADIUSED (BULL NOSE)



**SECTION A-A**



**SECTION B-B**

PRODUCTION WORK ORDER		PRODUCT I.D.: BX048048-08LD06S	DESCRIPTION: CURB INLET TOP SLAB 4' X 4' X 6" THK.	
	QUALITY CONTROL CHECKLIST	PRODUCT VIEW: RIGHT SIDE UP	CUSTOMER: CONVERGENT WATER TECHNOLOGIES	
	<input type="checkbox"/> ALL DIMENSIONS CORRECT. <input type="checkbox"/> LIFTERS INSTALLED. <input type="checkbox"/> OPENING CENTERED. <input type="checkbox"/> REINFORCING CORRECT. <input type="checkbox"/> SURFACE QUALITY ACCEPTABLE. <input type="checkbox"/> EDGES CHAMFERED. <input type="checkbox"/> ALL PATCHWORK ACCEPTABLE.	PLANT: BEAVER DAM, KY.	PROJECT: CONVERGENT CURB BOXES	
		WEIGHT: 1,650 LBS.	STRUCTURE I.D.: 2	
		TOP SECTION JOINT: N/A	SALES ORDER NO.: 26-1639	
		BASE SECTION JOINT: N/A	P.C.: J.H. ROSS, PE	DRAWING: S. FELLETER
QC CHECK INITIALS:		DATE: 03/12/26	SCALE: NTS	PG. 1 of 1