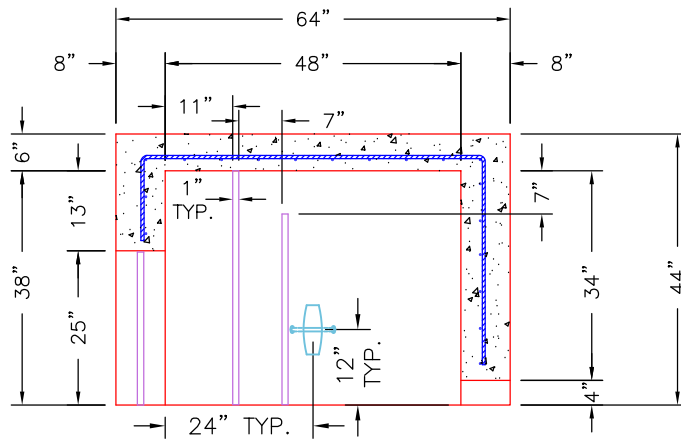


**GENERAL NOTES:**

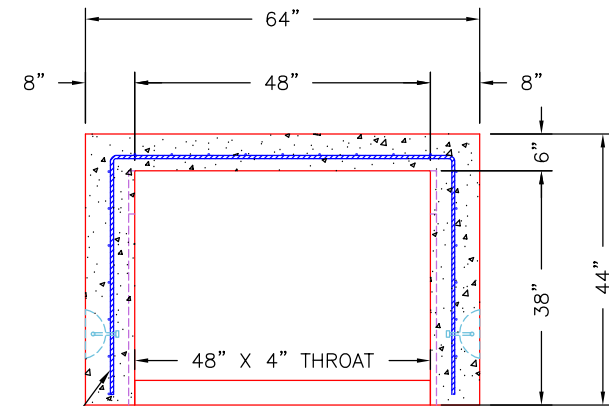
1. MANUFACTURED PER ASTM C-913 (LATEST REVISION).
2. CONCRETE F'C: 4,500 PSI AT 28 DAYS.
3. REINFORCING: #4 BAR @ 6" C/C E.W. TYPICAL (GRADE 60).
4. JOINT SEALED WITH CONCRETE SEALANTS CS-102. MEETS ASTM C-990 SPECIFICATIONS. (SUPPLIED BY ICAST).
5. J.R. HOE MCS-455 FRAME & SOLID "STORM" COVER CAST OFFSET INTO TOP SLAB (SUPPLIED BY ICAST).
6. CONCRETE WEIGHTS: 38" TALL BASE = 6,900 LBS.  
6" TOP SLAB = 1,650 LBS.
7. BASE SLAB MUST BE FINISHED DOWN 2" FROM 8" TO 6" IN FORM

**Quantity 9**




**SECTION A-A**

#4 BAR @ 6" C/C E.W.  
(TYPICAL FOR WALLS & FLOOR)



**SECTION B-B**

		<b>PRODUCTION WORK ORDER</b> QUALITY CONTROL CHECKLIST <input type="checkbox"/> ALL DIMENSIONS CORRECT. <input type="checkbox"/> LIFTERS INSTALLED. <input type="checkbox"/> OPENING CENTERED. <input type="checkbox"/> REINFORCING CORRECT. <input type="checkbox"/> SURFACE QUALITY ACCEPTABLE. <input type="checkbox"/> EDGES CHAMFERED. <input type="checkbox"/> ALL PATCHWORK ACCEPTABLE.	<b>PRODUCT I.D.:</b> BX4848-08BAVF <b>PRODUCT VIEW:</b> UPSIDE DOWN <b>PLANT:</b> BEAVER DAM, KY. <b>WEIGHT:</b> 6,900 <b>TOP SECTION JOINT:</b> N/A <b>BASE SECTION JOINT:</b> N/A <b>QC CHECK INITIALS:</b>	<b>DESCRIPTION:</b> 48" X 48" X 38" TALL PRETX CURB INLET <b>CUSTOMER:</b> CONVERGENT WATER TECHNOLOGIES <b>PROJECT:</b> CONVERGENT CURB BOXES <b>STRUCTURE I.D.:</b> 2 <b>SALES ORDER NO.:</b> 26-1639 <b>P.C.:</b> J.H. ROSS, PE <b>DRAWING:</b> S. FELLETTA <b>DATE:</b> 03/12/26 <b>SCALE:</b> NTS <b>PG.</b> 1 of 1
---	--	--	---	--