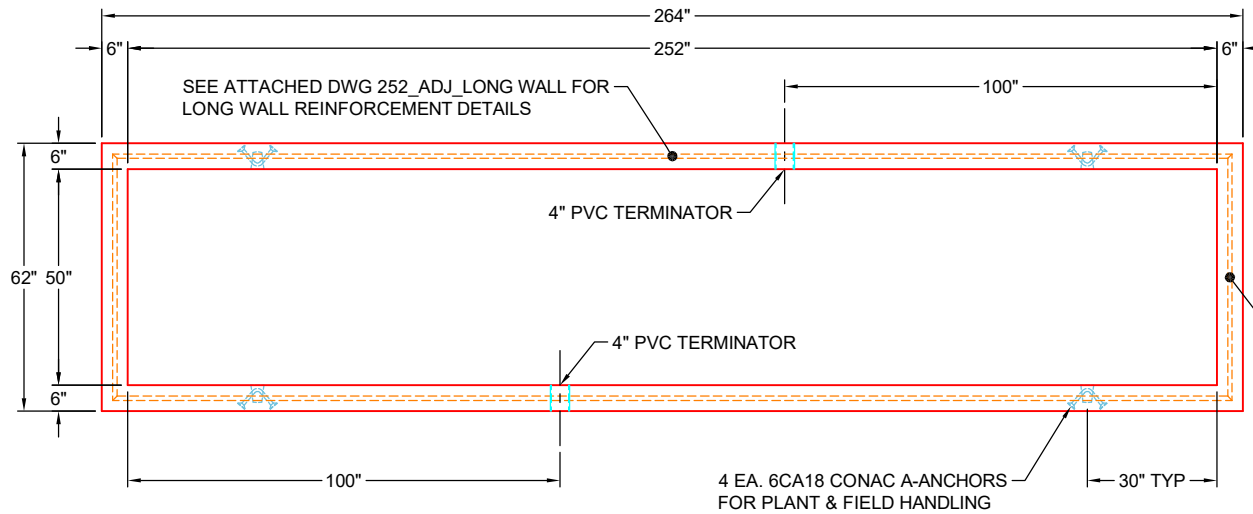
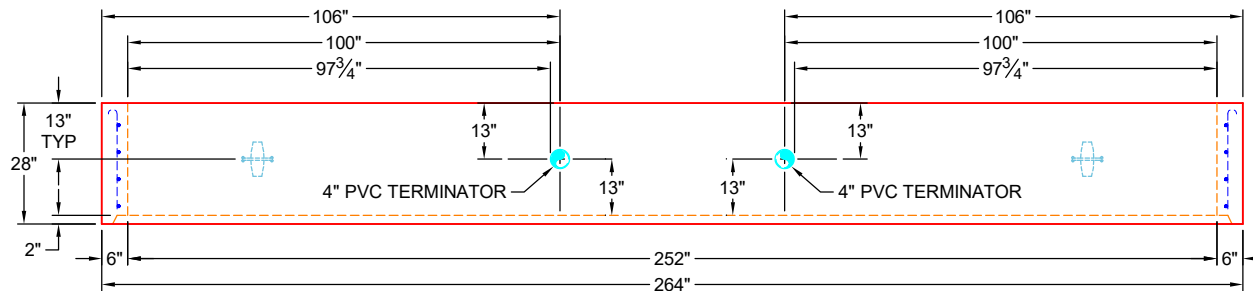


GENERAL NOTES:

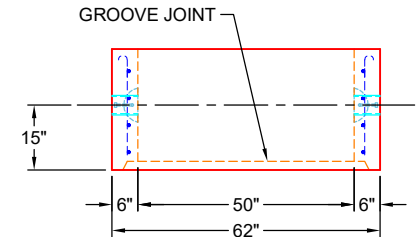
1. MANUFACTURED TO ASTM C-913 (LATEST REVISION)
2. CONCRETE: 5,000 PSI AT 28 DAYS
3. REINFORCEMENT - MIN. 1½" REBAR
CLEARANCE:
- LONG WALLS: PER ATTACHED DWG 252_ADJ_LONG WALL
- SHORT WALLS: PER ATTACHED DWG SHORT WALL
4. WEIGHTS: 9,178 LBS




**PLAN VIEW
(RIGHT SIDE UP)**

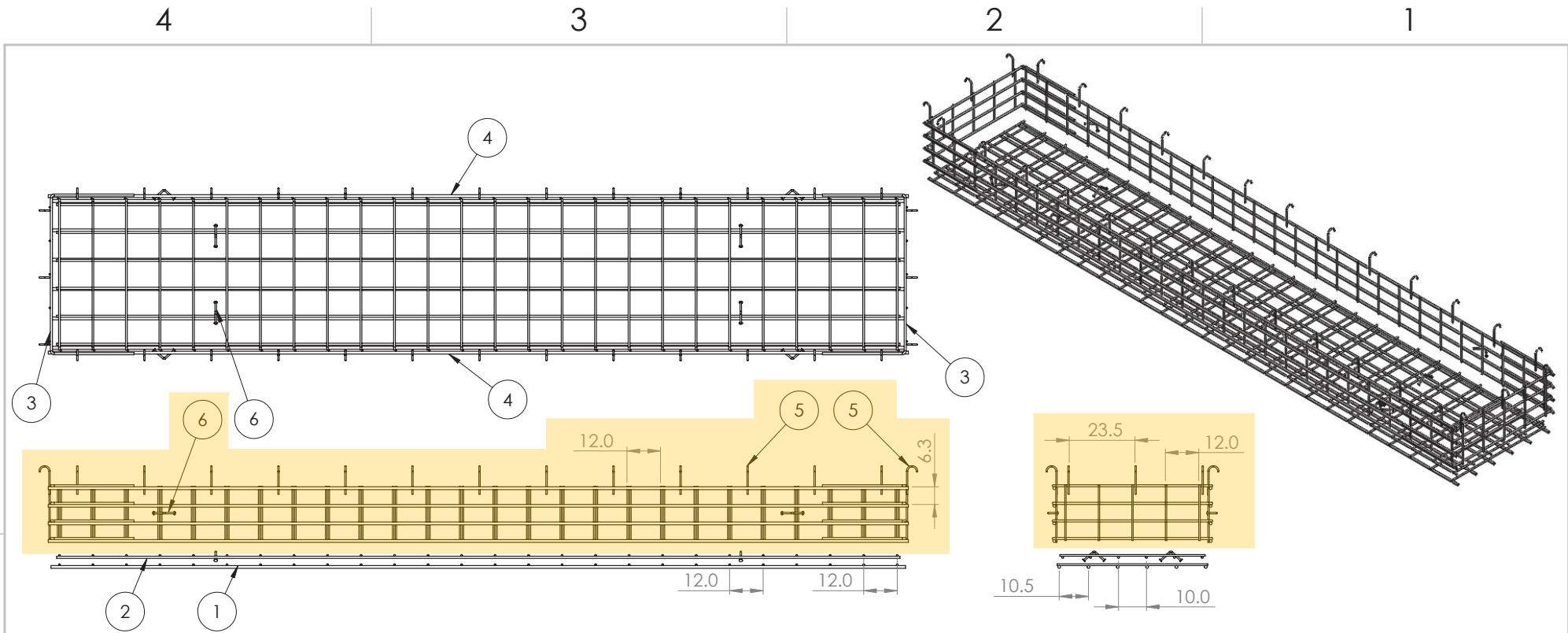


**FRONT VIEW
(RIGHT SIDE UP)**



**SIDE VIEW
(RIGHT SIDE UP)**

PRODUCTION WORK ORDER		PRODUCT I.D.: CVR	DESCRIPTION: 50" X 252" X 28" RISER		
	QUALITY CONTROL CHECKLIST <input type="checkbox"/> ALL DIMENSIONS CORRECT. <input type="checkbox"/> LIFTERS INSTALLED. <input type="checkbox"/> HOLE LOCATION(S) CORRECT. <input type="checkbox"/> REINFORCING CORRECT. <input type="checkbox"/> SURFACE QUALITY ACCEPTABLE. <input type="checkbox"/> EDGES CHAMFERED. <input type="checkbox"/> GROOVE JOINT INSTALLED.	PRODUCT VIEW: UPSIDE DOWN	CUSTOMER: ENDESOL, INC.		
		PLANT: BEAVER DAM, KY	PROJECT: 6-25 691254033		
		WEIGHT: 9,178 LBS	STRUCTURE: 2-61620 1 (EFX-60 21 PN VAULT)		
		TOP SECTION JOINT: GROOVE	ORDER NO: 26-1620		
		BASE SECTION JOINT: N / A	PE: J.H. ROSS	DRAWING: J.HORSLEY	
		QC CHECK INITIALS:	DATE: 04/24/26	SCALE: NTS	PG. 1 OF 1



- NOTES:
1. Rebar: #5, #6, #8 A614 Grade 60
 2. All Rebar to have 1.5" Cover Minimum

ITEM NO.	PART NUMBER	Qty.
1	252_Base_Bottom Mat	1
2	252_Base_Top Mat	1
3	Short Wall	2
4	252_ADJ_Long Wall	2
5	#4 0904J	32
6	6CA18	8

PROPRIETARY AND CONFIDENTIAL
 THE INFORMATION CONTAINED IN THIS DRAWING IS THE SOLE PROPERTY OF ENDESOL INC. ANY REPRODUCTION IN PART OR AS A WHOLE WITHOUT THE WRITTEN PERMISSION OF ENDESOL INC. IS PROHIBITED.

UNLESS OTHERWISE SPECIFIED:		NAME	DATE	<h1>ENDESOL</h1> <p>TITLE: EFX-60 Adjustable Section Rebar Layout</p> <p>SIZE B DWG. NO. EFX-60 ADJ Rebar REV X1</p> <p>SCALE: 1:50 WEIGHT: SHEET 1 OF 1</p>	
DIMENSIONS ARE IN INCHES		DRAWN	CMJ		3-25-16
TOLERANCES:		CHECKED	JHR		3-25-16
FRACTIONAL 1/8"		ENG APPR.	XXXX		XXXX
TWO PLACE DECIMAL .13		MFG APPR.	XXXX		XXXX
THREE PLACE DECIMAL .125		Q.A.	XXXX		XXXX
INTERPRET GEOMETRIC TOLERANCING PER:		COMMENTS:			
MATERIAL	Rebar A614 G60				
FINISH	MILL				
NEXT ASSY	USED ON				
APPLICATION	DO NOT SCALE DRAWING				

PROJECT: 6-25 691254033
STRUCTURE: 2-61620 1
JOB NUMBER: 26-1620

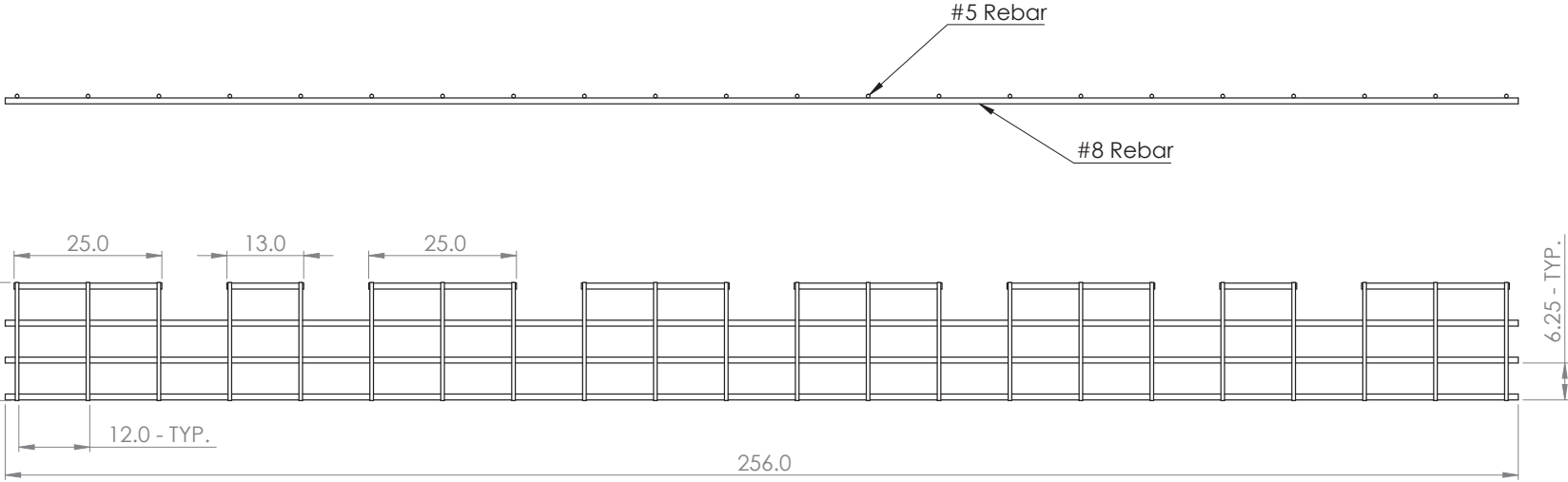
4

3

2

1

ITEM NO.	PART NUMBER	DESCRIPTION	QTY.
1	#8_256.0	#8 Rebar	3
2	#5_20.0	#5 Rebar	22
3	#8_25.0	#8 Rebar	6
4	#8_13.0	#8 Rebar	2



981 W. 7th Street
 Beaver Dam, KY
 42320
 P 270-363-2238
 F 270-363-2234
 iCastinc.com

DIMENSIONS ARE IN INCHES
 TOLERANCES:
 FRACTIONAL ±
 ANGULAR: MACH ± BEND ±
 DECIMAL ± 0.5"

MATERIAL

FINISH
 DO NOT SCALE DRAWING

	NAME	DATE
DRAWN	CMJ	8/3/20
CHECKED	JHR	8/3/20
ENG APPR.		
MFG APPR.		
Q.A.		
COMMENTS:		

PROPRIETARY AND CONFIDENTIAL
 THE INFORMATION CONTAINED IN THIS DRAWING IS THE SOLE PROPERTY OF
 INFRASTRUCTURE PRECAST INC. (iCast). ANY REPRODUCTION IN PART OR
 AS A WHOLE WITHOUT THE WRITTEN PERMISSION OF iCast IS PROHIBITED.

SIZE DWG. NO. REV.
B 252_ADJ_Long Wall
 SCALE: 1:50 WEIGHT: SHEET 1 OF 1

4

3

2

1

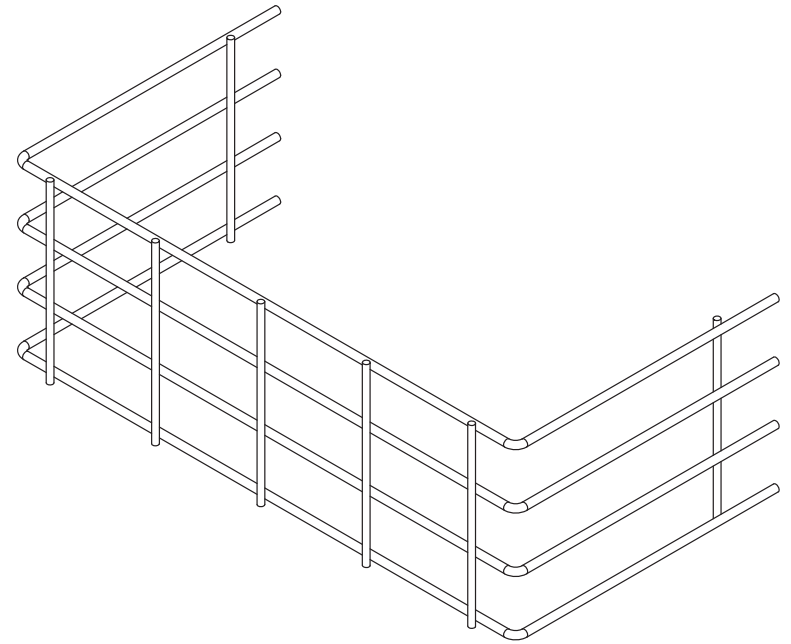
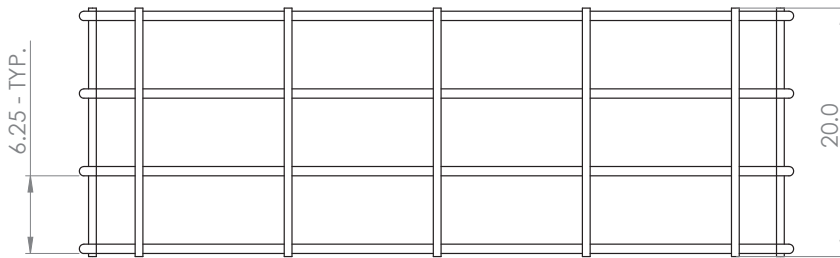
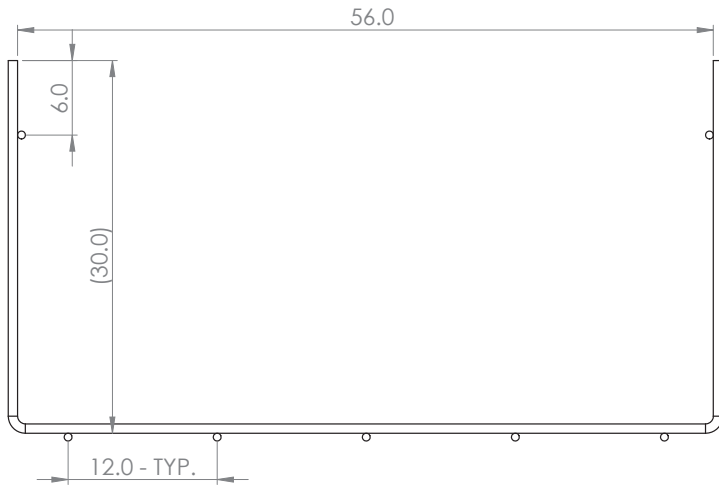
PROJECT: 6-25 691254033
STRUCTURE: 2-61620 1
JOB NUMBER: 26-1620

4


3

2

1



ITEM NO.	PART NUMBER	DESCRIPTION	QTY.
1	6SH	#6 Formed Rebar	4
2	#5_20.0	#5 Rebar	7

 infrastructure precast, inc. <small>PROPRIETARY AND CONFIDENTIAL</small> <small>THE INFORMATION CONTAINED IN THIS DRAWING IS THE SOLE PROPERTY OF INFRASTRUCTURE PRECAST INC. (iCast). ANY REPRODUCTION IN PART OR AS A WHOLE WITHOUT THE WRITTEN PERMISSION OF iCast IS PROHIBITED.</small>	981 W. 7th Street Beaver Dam, KY 42320 P 270-363-2238 F 270-363-2234 iCastinc.com	DIMENSIONS ARE IN INCHES TOLERANCES: FRACTIONAL ± ANGULAR: MACH ± BEND ± TWO PLACE DECIMAL ± THREE PLACE DECIMAL ±	NAME xxx	DATE	
	DRAWN	CHECKED	ENG APPR.	MFG APPR.	Q.A.
	MATERIAL	FINISH	COMMENTS	SCALE: 1:10	DWG. NO.
	DO NOT SCALE DRAWING	Short Wall	SHEET 1 OF 1	REV.	WEIGHT:
					SCALE: 1:10

4

3

2

1

PROJECT: 6-25 691254033
STRUCTURE: 2-61620 1
JOB NUMBER: 26-1620

Job Number:

26-1620

Job Name:

6-25 691254033

Structure:

EFX-60 21 PN Vault (1)

Note:

Nosing Kit To Be Shipped. See Chad Jarvis.