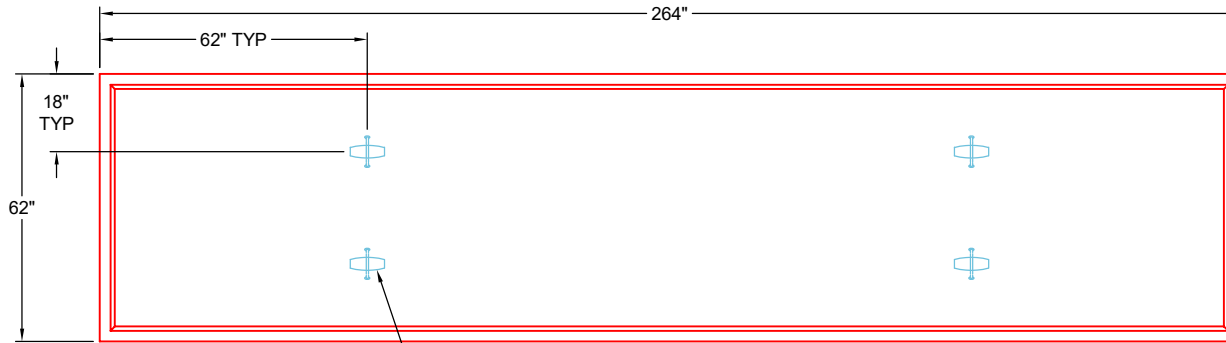


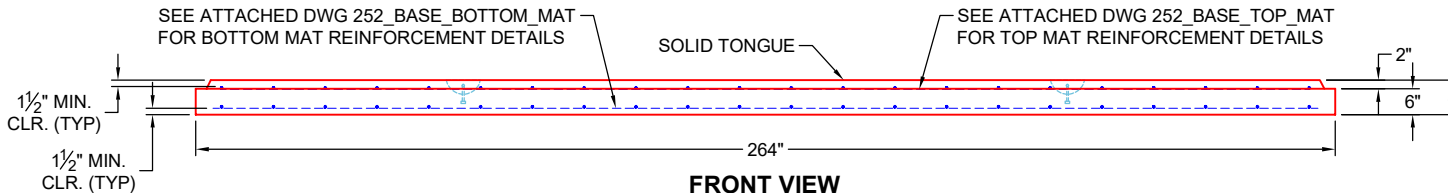
**GENERAL NOTES:**

1. MANUFACTURED TO ASTM C-913 (LATEST REVISION)
2. CONCRETE: 5,000 PSI AT 28 DAYS
3. REINFORCEMENT - MIN. 1½" REBAR CLEARANCE:  
 - TOP MAT: PER ATTACHED DWG 252\_BASE\_TOP\_MAT  
 - BOTTOM MAT: PER ATTACHED DWG 252\_BASE\_BOTTOM\_MAT
4. WEIGHTS: 11,502 LBS

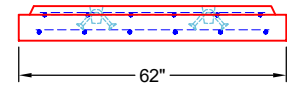


4 EA. 6CA18 CONAC A-ANCHORS FOR PLANT & FIELD HANDLING


**PLAN VIEW  
(RIGHT SIDE UP)**

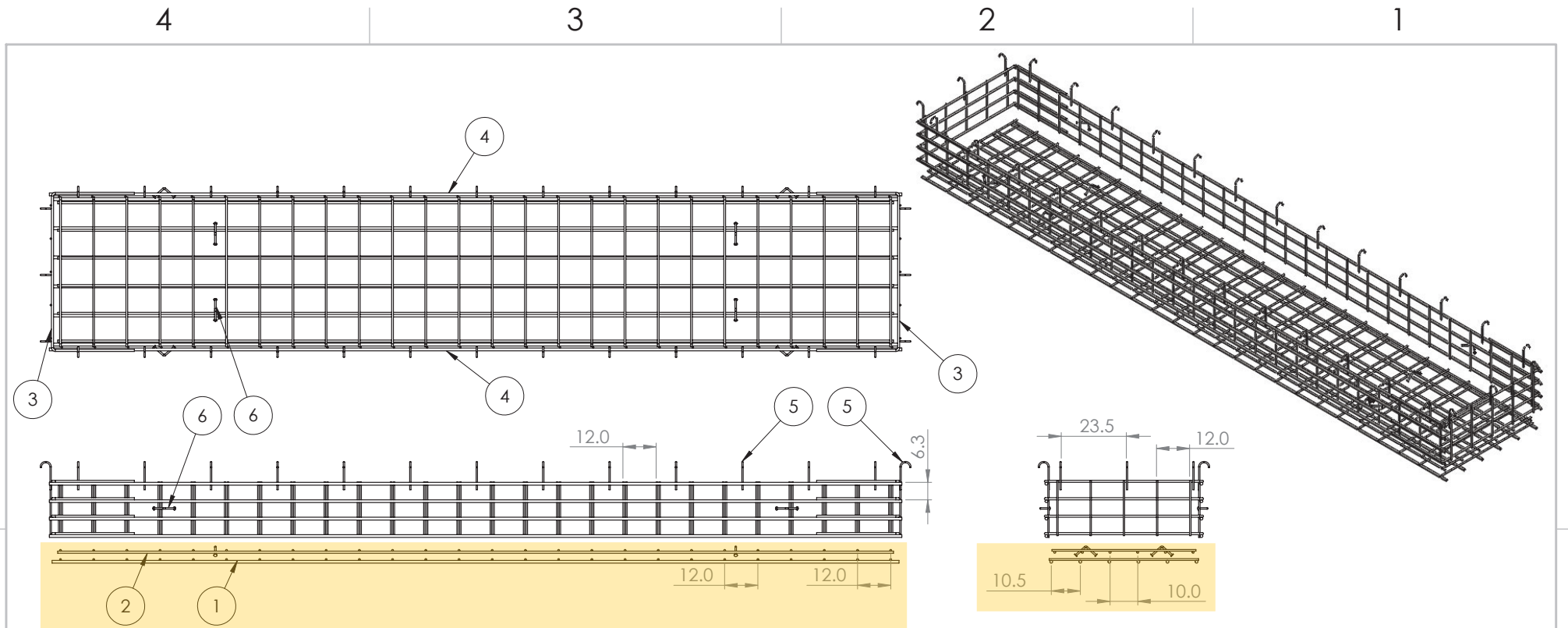


**FRONT VIEW  
(RIGHT SIDE UP)**



**SIDE VIEW  
(RIGHT SIDE UP)**

<b>PRODUCTION WORK ORDER</b>		PRODUCT I.D.: CVBS	DESCRIPTION: 62" X 264" X 8" SEPARATE BASE SLAB		
	<b>QUALITY CONTROL CHECKLIST</b> <input type="checkbox"/> ALL DIMENSIONS CORRECT. <input type="checkbox"/> LIFTERS INSTALLED. <input type="checkbox"/> CORRECT THICKNESS. <input type="checkbox"/> REINFORCING CORRECT. <input type="checkbox"/> FINISH ON SLAB SURFACE UNIFORM. <input type="checkbox"/> OUTSIDE TOP EDGE TROWELLED. <input type="checkbox"/> SOLID TONGUE JOINT INSTALLED.	PRODUCT VIEW: RIGHT SIDE UP	CUSTOMER: ENDESOL, INC.		
		PLANT: BEAVER DAM, KY	PROJECT: 7-27 691254032		
		WEIGHT: 11,502 LBS	STRUCTURE: 2-61617 1 (EFX-60 21 PN VAULT)		
		TOP SECTION JOINT: N / A	ORDER NO: 26-1617		
		BASE SECTION JOINT: SOLID TONGUE	PE: J.H. ROSS	DRAWING: J. HORSLEY	
		QC CHECK INITIALS:	DATE: 04/24/26	SCALE: NTS	PG. 1 OF 1



ITEM NO.	PART NUMBER	Qty.
1	252_Base_Bottom Mat	1
2	252_Base_Top Mat	1
3	Short Wall	2
4	252_ADJ_Long Wall	2
5	#4 0904J	32
6	6CA18	8

- NOTES:
1. Rebar: #5, #6, #8 A614 Grade 60
  2. All Rebar to have 1.5" Cover Minimum

**PROPRIETARY AND CONFIDENTIAL**  
 THE INFORMATION CONTAINED IN THIS DRAWING IS THE SOLE PROPERTY OF ENDESOL INC. ANY REPRODUCTION IN PART OR AS A WHOLE WITHOUT THE WRITTEN PERMISSION OF ENDESOL INC. IS PROHIBITED.

UNLESS OTHERWISE SPECIFIED:		NAME	DATE	<b>ENDESOL</b>
DIMENSIONS ARE IN INCHES		DRAWN	CMJ	
TOLERANCES:		CHECKED	JHR	3-25-16
FRACTIONAL 1/8"		ENG APPR.	XXXX	XXXX
TWO PLACE DECIMAL .13		MFG APPR.	XXXX	XXXX
THREE PLACE DECIMAL .125		Q.A.	XXXX	XXXX
INTERPRET GEOMETRIC TOLERANCING PER:		COMMENTS:		
MATERIAL		Rebar A614 G60		
FINISH		MILL		
NEXT ASSY	USED ON	APPLICATION		
APPLICATION		DO NOT SCALE DRAWING		
TITLE:		EFX-60 Adjustable Section Rebar Layout		
SIZE	DWG. NO.	REV		
<b>B</b>	EFX-60 ADJ Rebar	<b>X1</b>		
SCALE: 1:50		WEIGHT:	SHEET 1 OF 1	

**PROJECT: 7-27 691254032**  
**STRUCTURE: 2-61617 1**  
**JOB NUMBER: 26-1617**

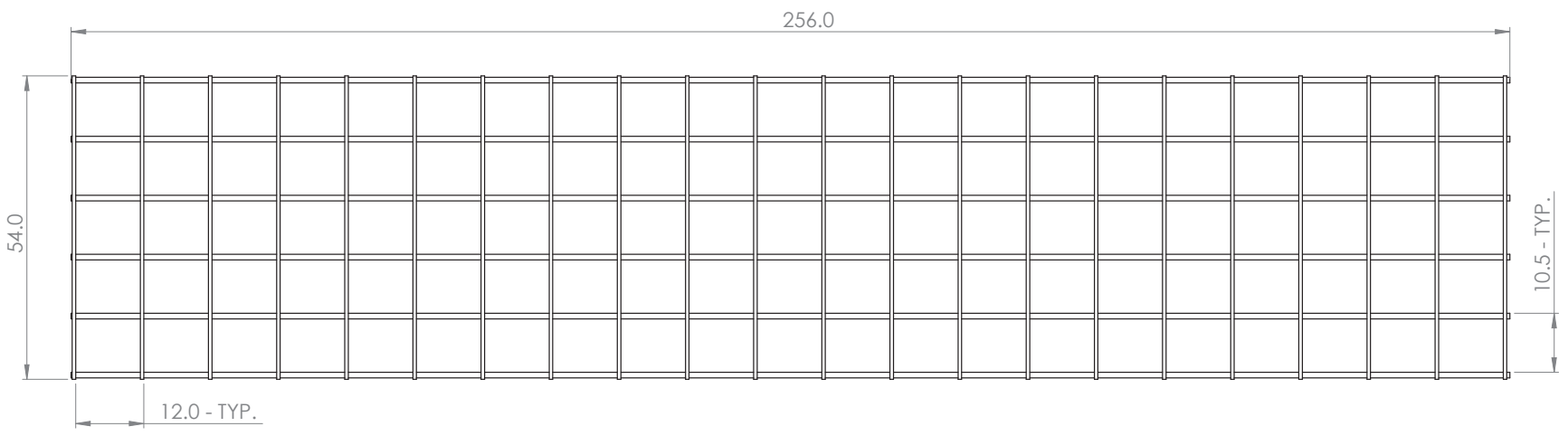
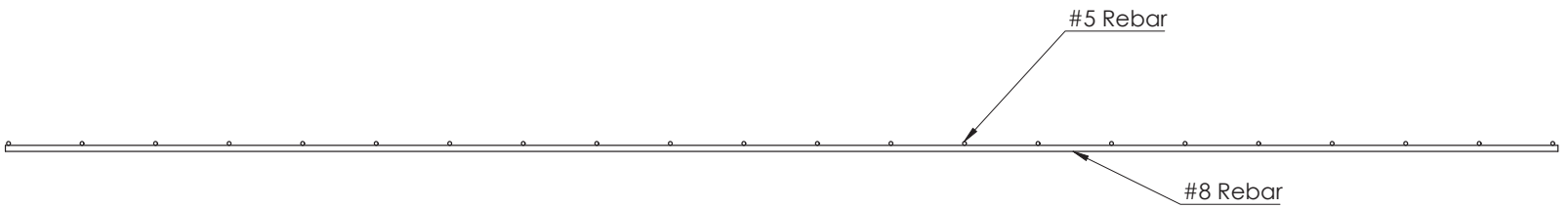
4

3

2

1

ITEM NO.	PART NUMBER	DESCRIPTION	QTY.
1	#8_256.0	#8 Rebar	6
2	#5_54.0	#5 Rebar	22



981 W. 7th Street  
 Beaver Dam, KY  
 42320  
 P 270-363-2238  
 F 270-363-2234  
 iCastinc.com

DIMENSIONS ARE IN INCHES  
 TOLERANCES:  
 FRACTIONAL ±  
 ANGULAR: MACH ± BEND ±  
 DECIMAL ± 0.5"

MATERIAL

FINISH  
 DO NOT SCALE DRAWING

	NAME	DATE
DRAWN	CMJ	8/3/20
CHECKED	JHR	8/3/20
ENG APPR.		
MFG APPR.		
Q.A.		
COMMENTS:		

PROPRIETARY AND CONFIDENTIAL  
 THE INFORMATION CONTAINED IN THIS DRAWING IS THE SOLE PROPERTY OF  
 INFRASTRUCTURE PRECAST INC. (iCast). ANY REPRODUCTION IN PART OR  
 AS A WHOLE WITHOUT THE WRITTEN PERMISSION OF iCast IS PROHIBITED.

SIZE	DWG. NO.	REV.
B	252_Base_Bottom Mat	
SCALE: 1:50	WEIGHT:	SHEET 1 OF 1

**PROJECT: 7-27 691254032**  
**STRUCTURE: 2-61617 1**  
**JOB NUMBER: 26-1617**

4

3

2

1

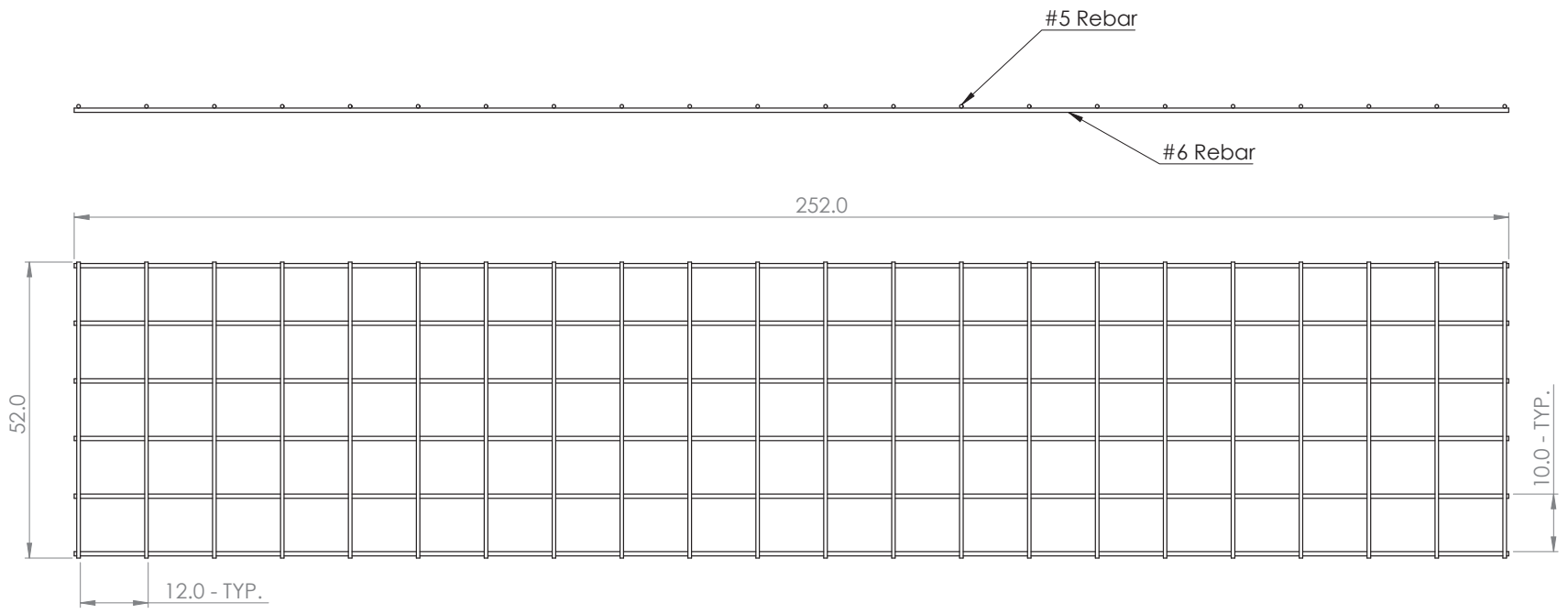
4

3

2

1

ITEM NO.	PART NUMBER	DESCRIPTION	QTY.
1	#6_252.0	#6 Rebar	6
2	#5_52.0	#5 Rebar	22



981 W. 7th Street  
 Beaver Dam, KY  
 42320  
 P 270-363-2238  
 F 270-363-2234  
 iCastinc.com

DIMENSIONS ARE IN INCHES  
 TOLERANCES:  
 FRACTIONAL ±  
 ANGULAR: MACH ± BEND ±  
 DECIMAL ± 0.5"  
 MATERIAL  
 FINISH  
 DO NOT SCALE DRAWING

	NAME	DATE
DRAWN	CMJ	8/3/20
CHECKED	JHR	8/3/20
ENG APPR.		
MFG APPR.		
Q.A.		
COMMENTS:		

**PROPRIETARY AND CONFIDENTIAL**  
 THE INFORMATION CONTAINED IN THIS DRAWING IS THE SOLE PROPERTY OF  
 INFRASTRUCTURE PRECAST INC. (iCast). ANY REPRODUCTION IN PART OR  
 AS A WHOLE WITHOUT THE WRITTEN PERMISSION OF iCast IS PROHIBITED.

SIZE DWG. NO. **B** 252\_Base\_Top Mat REV.  
 SCALE: 1:50 WEIGHT: SHEET 1 OF 1

4

3

2

1

**PROJECT: 7-27 691254032**  
**STRUCTURE: 2-61617 1**  
**JOB NUMBER: 26-1617**