

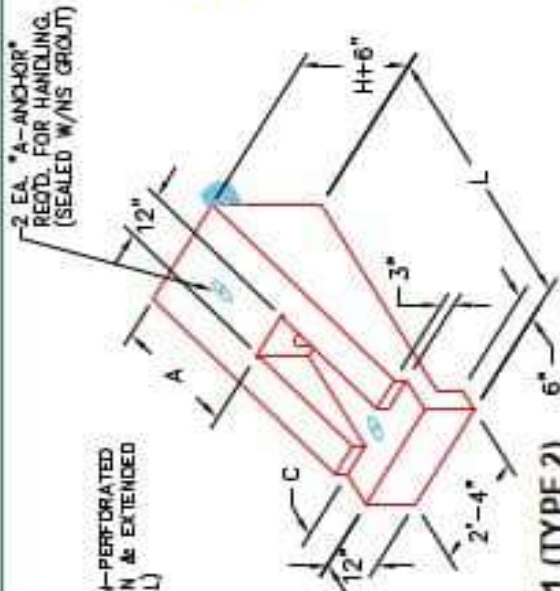
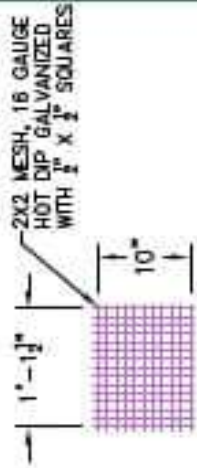


Structure ID: 3 HW

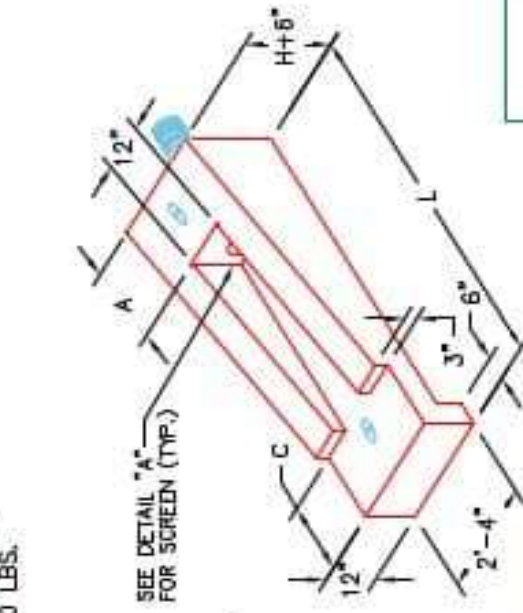
P1 HWPP614ST3

6" - HW Perforated Pipe Type 3 (4 to1) F/F

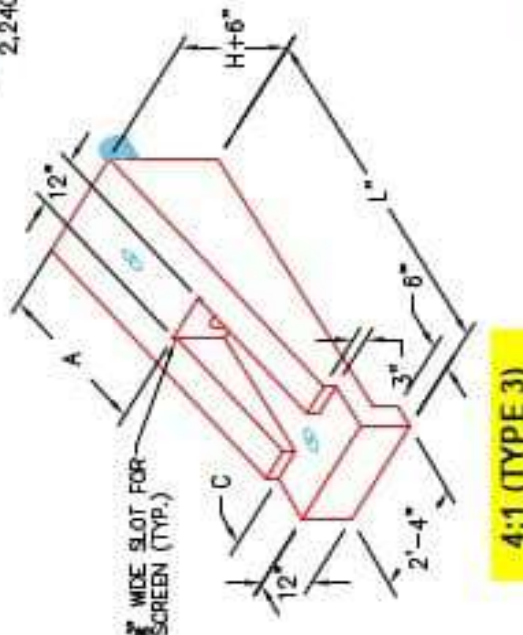
PIPE DIA.	SLOPE	DIMENSIONS				CLASS "A" CONCRETE	
		L	H	A	C	CU. YDS.	DL. YDS.
4"	2:1	3'-0 1/4"	1'-5"	8"	8"	0.38	0.38
AND	3:1	5'-1 1/8"	1'-0 1/4"	2'-3"	9"	0.56	0.56
6"	4:1	6'-9 3/4"	3'-0"	1'-0"	1'-0"	0.74	0.74
	6:1	7'-2 1/2"	1'-5"	1'-5"	1'-5"	0.82	0.82
	2:1	3'-9 1/2"	1'-5"	8"	8"	0.43	0.43
	3:1	5'-8 1/4"	1'-10 1/4"	2'-3"	9"	0.53	0.53
	4:1	7'-7"	1'-10 1/4"	3'-0"	1'-8"	0.83	0.83
	6:1	8'-4 1/2"	1'-4 1/2"	1'-5"	1'-8"	0.73	0.73
	2:1	4'-3"	1'-5"	6"	6"	0.47	0.47
	3:1	6'-3"	2'-1"	2'-3"	9"	0.68	0.68
	4:1	8'-4"	3'-0"	3'-0"	1'-0"	0.91	0.91
	6:1	9'-6"	1'-7"	1'-5"	1'-5"	0.83	0.83



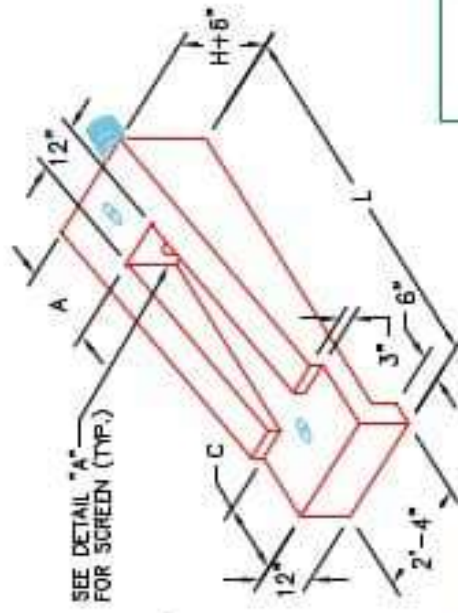
2:1 (TYPE 1)
1,520 LBS.



3:1 (TYPE 2)
2,240 LBS.



4:1 (TYPE 3)
2,960 LBS.



6:1 (TYPE 4)
2,480 LBS.

APPROVED FOR DESIGN ONLY

Approved by: *[Signature]*
 619 399-0000

DIVISION OF CONSTRUCTION

INFRASTRUCTURE PRECAST, INC.
 851 WEST 7TH ST, BOONVILLE, KY 40309
 PHONE (606) 363-2238, FAX (606) 368-7434

KYTC PERFORATED PIPE HEADWALLS

DESIGNED BY: KYTC, DATE: 12-07-21
 REVISIONS BY: J. J. REEDS, PC
 WEB: WWW.DISTHC.COM SCALE: N/A

- NOTES:
1. CONCRETE: KYTC APPROVED.
 2. REINFORCING: #4 BAR @ 12" C/C E.W. - GRADE 60, (WITH 2" CONCRETE COVER MINIMUM)
 3. REINFORCING BARS TO BE TACK WELDED OR TIED.
 4. PIPE AND LIFTING ANCHOR POCKETS TO BE GROUTED WITH KYTC APPROVED NON-SHRINK GROUT.
 5. DRAWING TO BE USED IN CONJUNCTION WITH KYTC STD. DRAWING RDP-010-09 AND THE STANDARD SPECIFICATIONS FOR ROAD AND BRIDGE CONSTRUCTION.
 6. CHAMFER ON ALL EXPOSED EDGES.