

Job Name: 26-1587 - Rough River Dam Material
Job Location: Falls of Rough, KY
Contractor: Ferguson

PC: Celina Goff
 TECH: Jared - A
 Plant: 100



Structure ID: **10+00-2 MHA**

Spec: KYTC
 Type: MHA
 Size: 48"
 Rim: 560.06'
 Invert: 556'
 Rim to Invert: 4.06'

Sump: 3.145"
 Floor (Top): 555.738"
 Floor Height: 8"

Floor (Bot): 555.071'
 Overall Height: 4.833'
 Slack: 1.865"

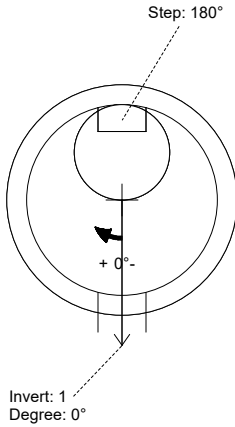
Structure Notes:

1. PER KYTC MANHOLE TYPE A / ASTM C-478 SPECS
2. CONCRETE: 4,000 PSI AT 28 DAYS
3. REINFORCEMENT:
 - FLAT LID: #4 BAR @ 10" C.C. E.W. (GRADE 60)
 - BASE: PER ASTM A615
4. NO STORM INVERT
5. STEPS AT 180 DEGREES
6. 8" CASTING SUPPLIED BY OTHERS

STRUCTURE SUMMARY:

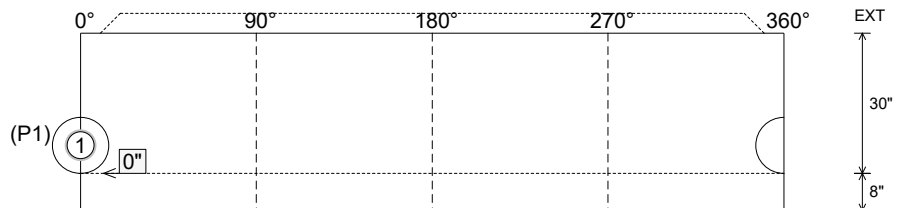
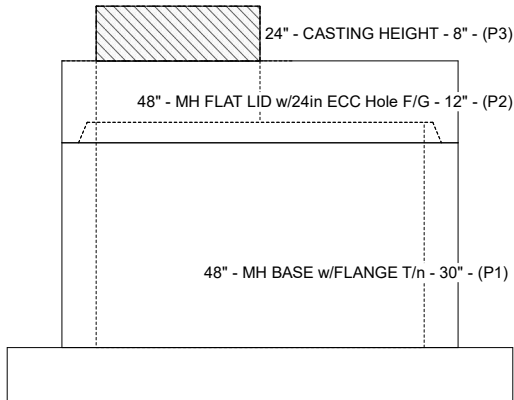
P3) 24" - CASTING HEIGHT - 8"	0 lb
P2) 48" - MH FLAT LID w/24in ECC Hole F/G - 12"	1561 lb
P1) 48" - MH BASE w/FLANGE T/n - 30"	4935 lb
1) 48" - Conseal CS-102 1.00"	0 lb
1) Hole - 12	0 lb
2) MH Step ML-10-TDS-NCR - 10"	0 lb

Structure Total:	6496 lb



Position	Elev	Angle	Pipe	Pipe OD	Hole	Connector	Up ()	Ref
Rim	560.06'							
Reducer								
Invert 1	556'	0°	6" PVC SCH80	6.625"	12"	Hole 12	0"	P1
Invert 2								
Invert 3								
Invert 4								
Invert 5								
Invert 6								
Invert 7								
Invert 8								

Cast (Int. Dim.) - Interior Dimensions



Submittal Drawing
 4/21/2026 9:30:01 AM

SUBMITTAL
 APPROVED BY: