

Job Name: 26-1587 - Rough River Dam Material
 Job Location: Falls of Rough, KY
 Contractor: Ferguson

Plant: 100

4/21/2026 9:34:21 AM

Tech: Jared - A

PC: Celina Goff



Structure ID: 10+00-2 MHA

P2 MH048LD12ECC

MH FLAT LID w/24in ECC Hole F/G

- P3) 24" - CASTING HEIGHT - 8"
- P2) 48" - MH FLAT LID w/24in ECC Hole F/G - 12"
- P1) 48" - MH BASE w/FLANGE T/n - 30"
- 1) 48" - Conseal CS-102 1.00"
- 1) Hole - 12
- 2) MH Step ML-10-TDS-NCR - 10"

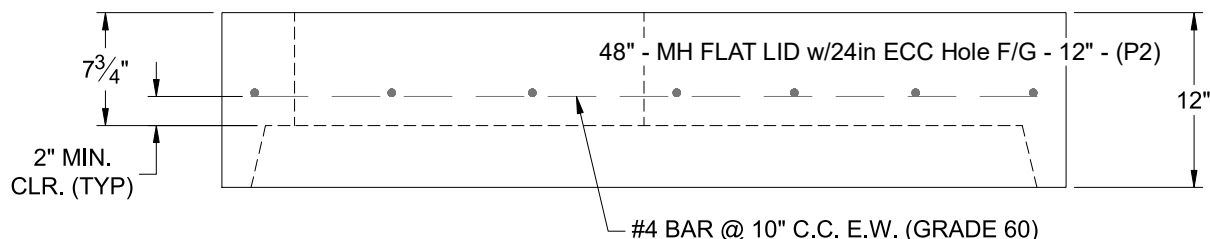
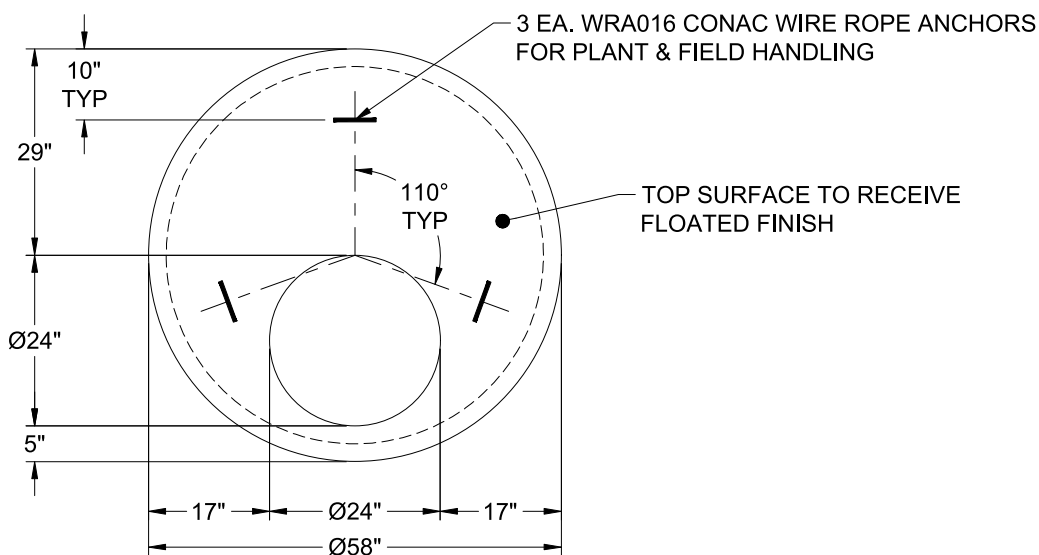
0 lb
 1561 lb
 4935 lb
 0 lb
 0 lb
 0 lb

 0 lb

Structure Total: 6496 lb

Structure Notes:

1. PER KYTC MANHOLE TYPE A / ASTM C-478 SPECS
2. CONCRETE: 4,000 PSI AT 28 DAYS
3. REINFORCEMENT: #4 BAR @ 10" C.C. E.W. (GRADE 60) - 2" MIN. REBAR CLEARANCE (TYP)
4. 8" CASTING SUPPLIED BY OTHERS
5. LIFTERS: 3 EA. WRA016 CONAC WIRE ROPE ANCHORS FOR PLANT & FIELD HANDLING
6. TOP SURFACE TO RECEIVE FLOATED FINISH



Coating (Int):
 Coating (Ext):

Seam Up: Flat
 Seam Dn: Groove

Wall Thickness: 5"

Height (Ext): 12"

Weight (Net): 1561 lb
 Volume (Net): 0.4cu.yd