

Job Name: 26-1555 - Berry Global East Parking Lot Consolidation
 Job Location: Evansville, IN
 Contractor: Deig Bros Lumber & Construction Co, Inc.

Plant: 100
 4/10/2026 12:26:25 PM

Tech: Jared - F
 PC: A. Chambers

Structure ID: CI 103-4 ST-IN

P2 MH048LD07ECC

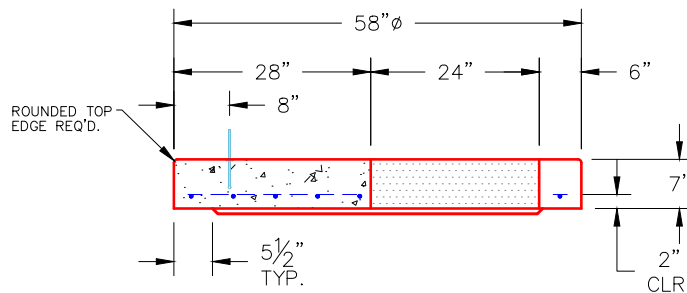
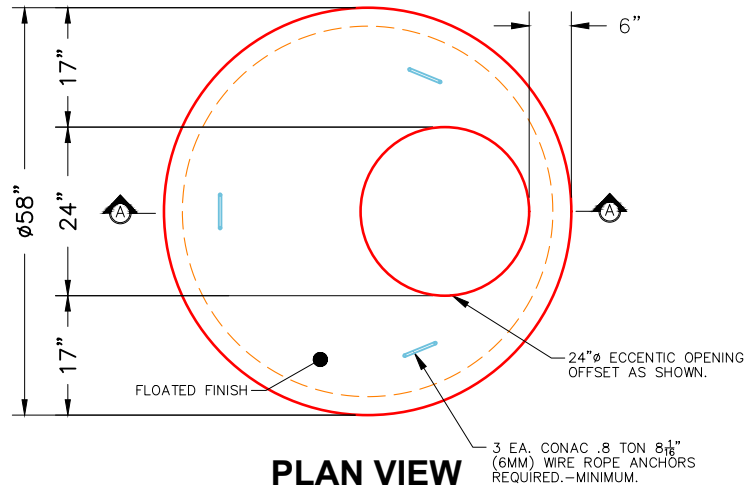
MH FLAT TOP w/ 24" ECC Hole F/F

- P3) 24" - CASTING HEIGHT - 10"
- P2) 48" - MH FLAT TOP w/ 24" ECC Hole F/F - 7"
- P1) 48" - MH BASE Custom Ht F/n - 67"
- 1) CASTING - HOE R-3305 TYPE 3 F/C
- 1) CASTING - BMP SNOOT 18R w/ KIT
- 1) 48" - Conseal CS-102 1.00"
- 3) Hole - 18
- 3) MH Step ML-10-TDS-NCR - 10"

0 lb
 1286 lb
 5684 lb
 443 lb
 25 lb
 0 lb
 0 lb
 0 lb

 Structure Total: 7438 lb

Structure Notes:
 1. PER ASTM C478 SPECIFICATIONS.
 2. CONCRETE = 4,000 PSI AT 28 DAYS.
 3. NO INVERT CHANNEL.
 4. CASTING BY ICAST (HOE R-3305 TYPE 3 F/C).
 REINFORCING PER ASTM A615 (GRADE 60).
 - TOP SLAB (As .62) #5 BARS AT 6" C.C.E.W..
 - RISER/WALLS (As .12)
 - FLOOR (As .31) #5 BARS AT 12" C.C.E.W.



SECTION A-A

NOTES:

- 1. MANUFACTURED TO ASTM C-478 (LATEST REVISION).
- 2. CONCRETE: 4,000 PSI AT 28 DAYS.
- 3. REINFORCING: #5 BAR @ 6" O.C. E.W. (GRADE 60).

Coating (Int):
 Coating (Ext):

Seam Up: Flat
 Seam Dn: Flat

Wall Thickness: 5"

Height (Ext): 7"

Weight (Net): 1286 lb
 Volume (Net): 0.33cu.yd