

Job Name: 26-1555 - Berry Global East Parking Lot Consolidation
 Job Location: Evansville, IN
 Contractor: Deig Bros Lumber & Construction Co, Inc.

Plant: 100
 4/10/2026 12:22:02 PM

Tech: Jared - F
 PC: A. Chambers

Structure ID: CI 101-2 ST-IN

P2 BX024036-08LD08S

CB FLAT TOP 8"W w/24"Hole F/F

- P3) 24" - CASTING HEIGHT - 10"
- P2) 24" x 36" - CB FLAT TOP 8"W w/24"Hole F/F - 8"
- P1) 24" x 36" - BOX BASE 8inW, 8inF, Variable Ht F/n - 56"
- 1) CASTING - BMP SNOUT 18F w/ KIT
- 1) CASTING - HOE R-3305 TYPE 3 F/C
- 1) 24" x 36" - Conseal CS-102 1.00"
- 1) Hole - 18

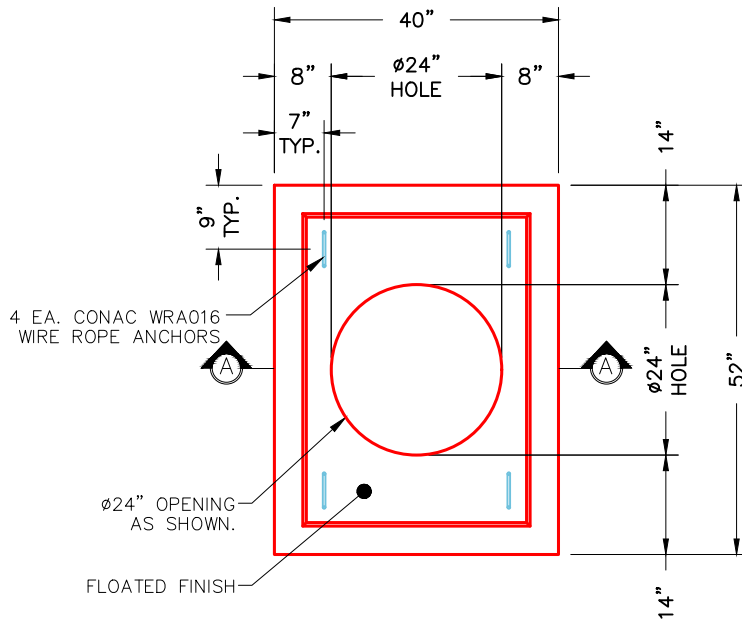
0 lb
 1093 lb
 6934 lb
 25 lb
 443 lb
 0 lb
 0 lb

 Structure Total: 8494 lb

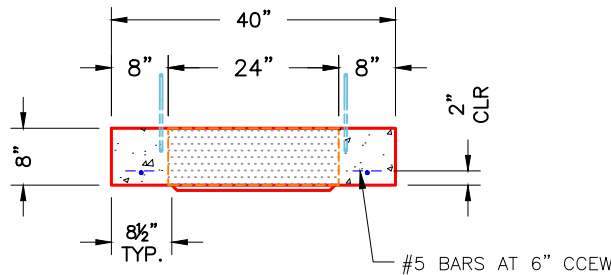
Structure Notes:

1. PER ASTM C913 SPECIFICATIONS.
2. CONCRETE = 4,000 PSI AT 28 DAYS.
3. NO STEPS AND NO INVERT CHANNEL.
4. CASTING BY ICAST (HOE R-3305 TYPE 3 F/C).

REINFORCING PER ASTM A615 (GRADE 60).
 - TOP SLAB (As .62) #5 BARS AT 6" C.C.E.W.
 - WALLS (As .12) #5 BARS AT 12" C.C.E.W.
 - FLOOR (As .12) #5 BARS AT 12" C.C.E.W.



PLAN VIEW



SECTION A-A

NOTES:

1. MANUFACTURED TO ASTM C-913 (LATEST REVISION).
2. CONCRETE: 4,000 PSI AT 28 DAYS.
3. REINFORCING: #5 BAR @ 6" O.C. E.W. (GRADE 60).

Coating (Int):
 Coating (Ext):

Seam Up: Flat
 Seam Dn: Flat

Wall Thickness: 8"

Height (Ext): 8"

Weight (Net): 1093 lb
 Volume (Net): 0.28cu.yd